

BERLIN'S LOGISTICS HUBS: LARGE / MEDIUM / SMALL



Katharina Kröger

Acting Head, Mobility Policy Unit

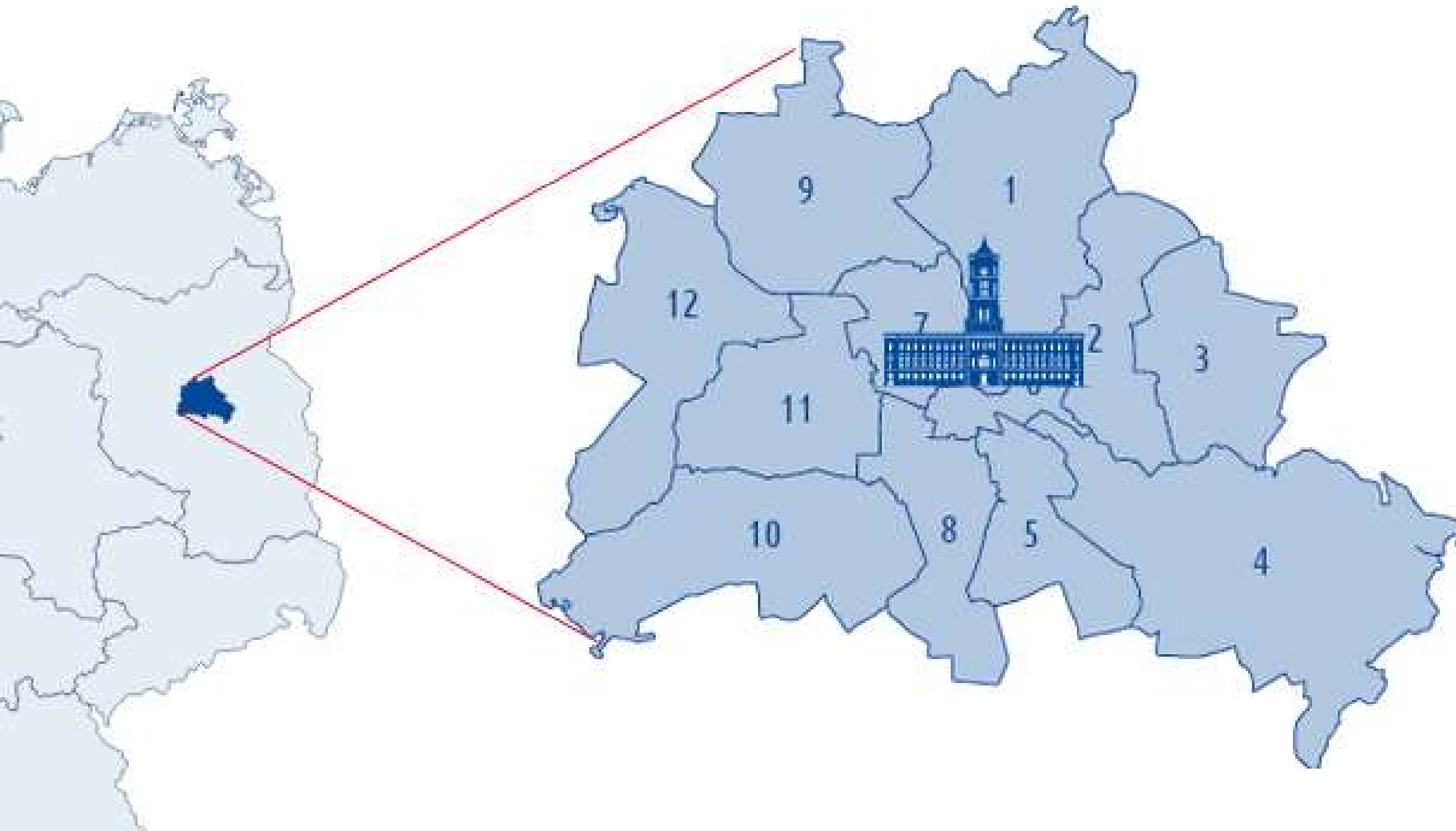
Senate Department for Urban Mobility, Transport, Climate Action and Environment

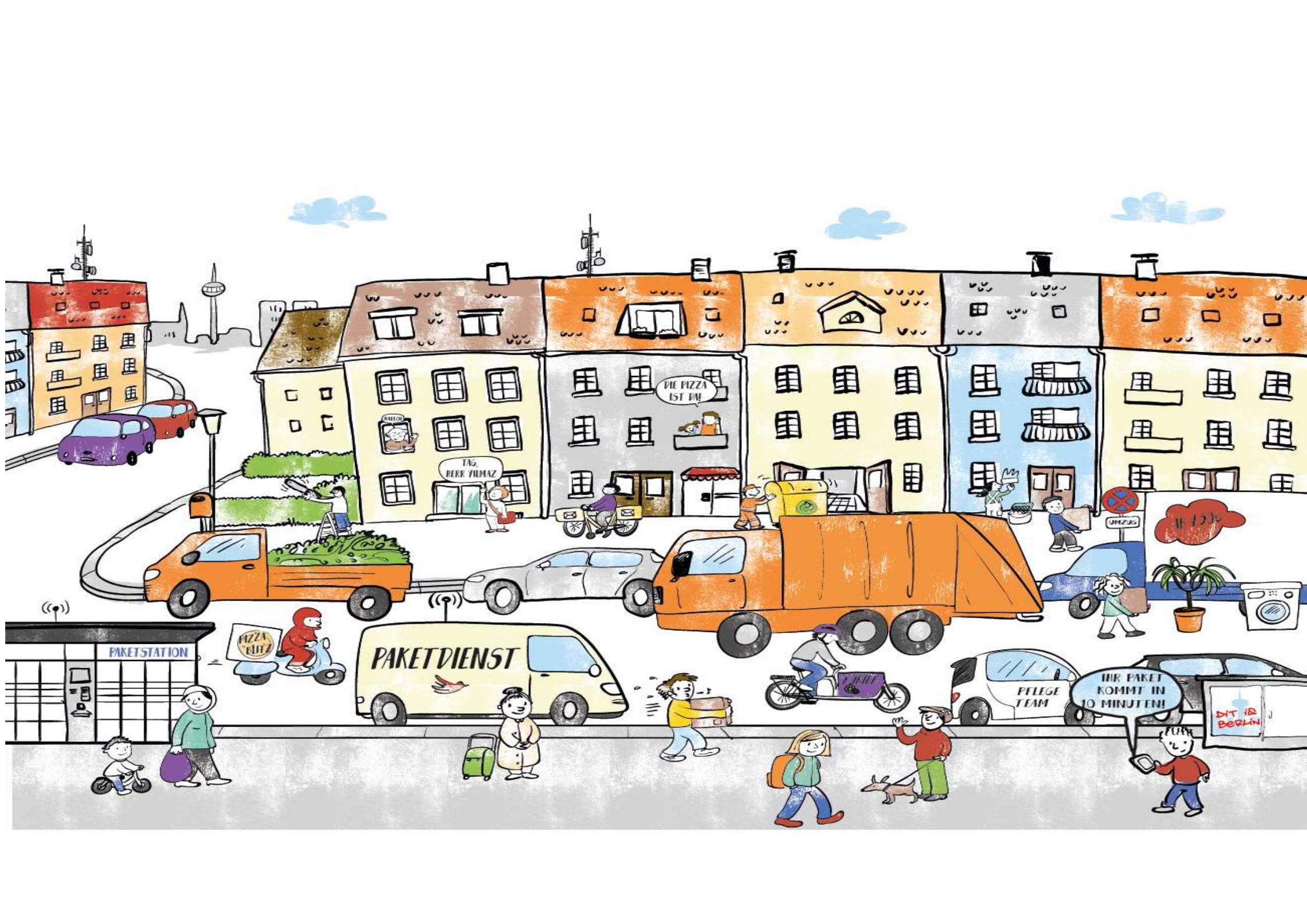
Senatsverwaltung
für Mobilität, Verkehr,
Klimaschutz und Umwelt

BERLIN



Berlin – one city / 12 boroughs / 3.8 million inhabitants





PAKETSTATION

PAKETDIENST

DIE PIZZA IST DA!

HG. HERR YILMAZ

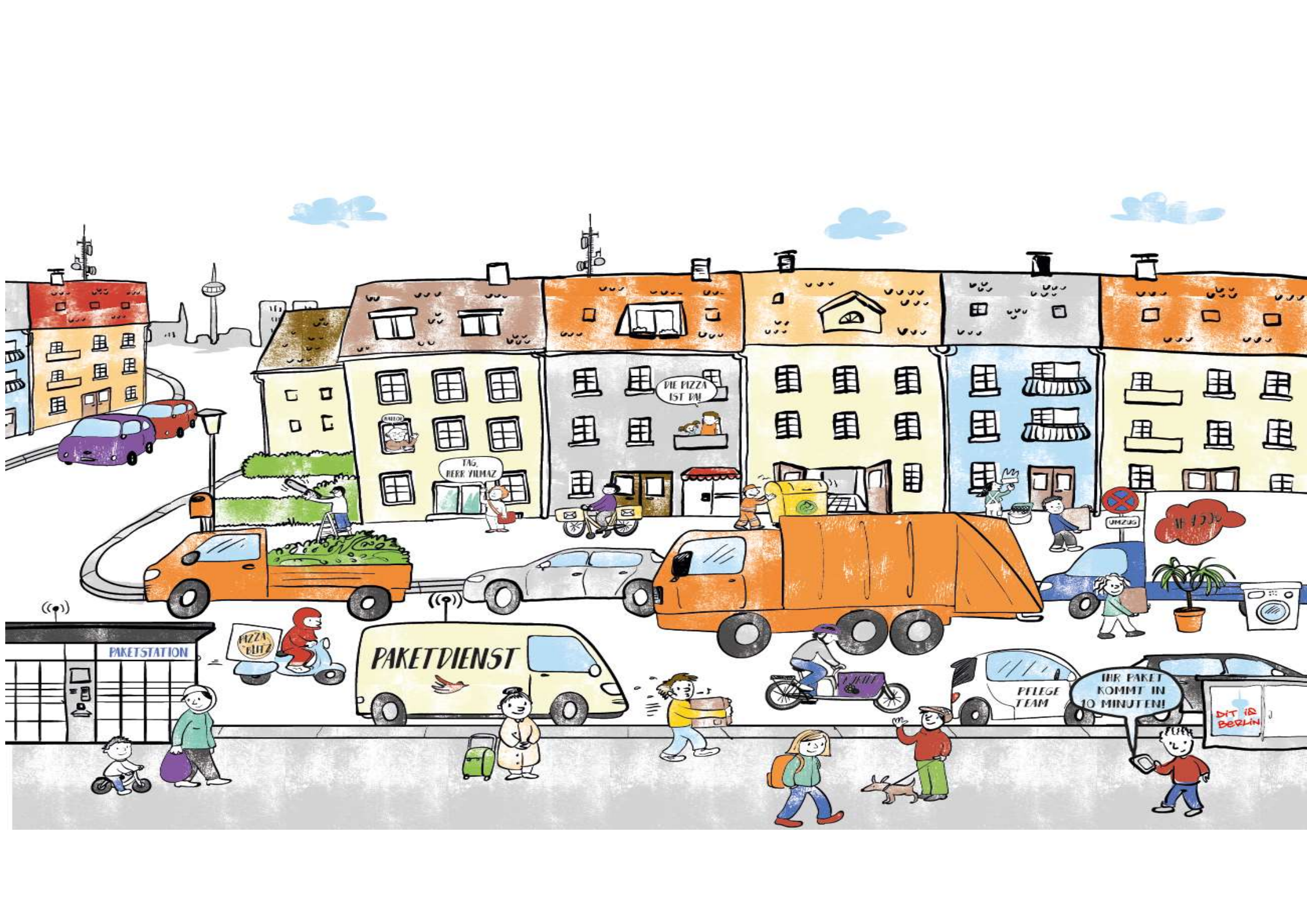
PELEGE TEAM

IHR PAKET KOMMT IN 10 MINUTEN!

DIT IS BERLIN

UMZUG

11.12.20



PAKETDIENST

PAKETSTATION

DIE PIZZA IST DA!

TAG, HERR YILMAZ

PELEGE TEAM

IHR PAKET KOMMT IN 10 MINUTEN!

UMZUG

DIT IS BERLIN

Major challenge ...

... define the operator!

Berlin's logistics hubs: large / medium / small



One (public) operator – various users

Berlin's logistics hubs: **large** / medium / small



Berlin Westhafen: 3 km distance to the Federal Chancellor's office

Berlin's logistics hubs: large / medium / small



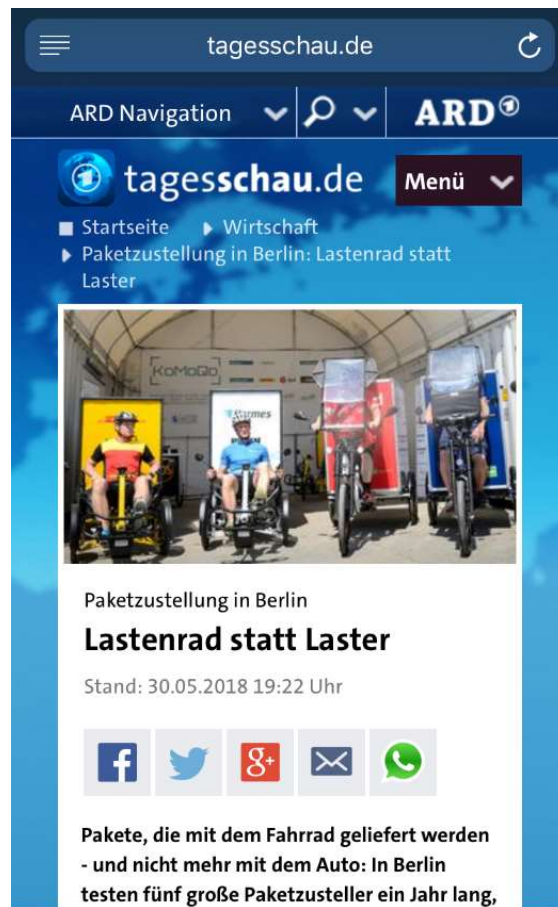
- 140.000 20-foot-container units handled (2024)
- 2 million tons of goods coming into Berlin by rail or barge and trucks

We want smaller solutions as well

- short distances to private and commercial recipients/senders
- enable (locally) emission-free vehicles and transport solutions



KoMoDo project as starting point - One public operator / five users




tagesschau.de

ARD Navigation

tagesschau.de Menü

Startseite Wirtschaft

Paketzustellung in Berlin: Lastenrad statt Laster



Paketzustellung in Berlin
Lastenrad statt Laster

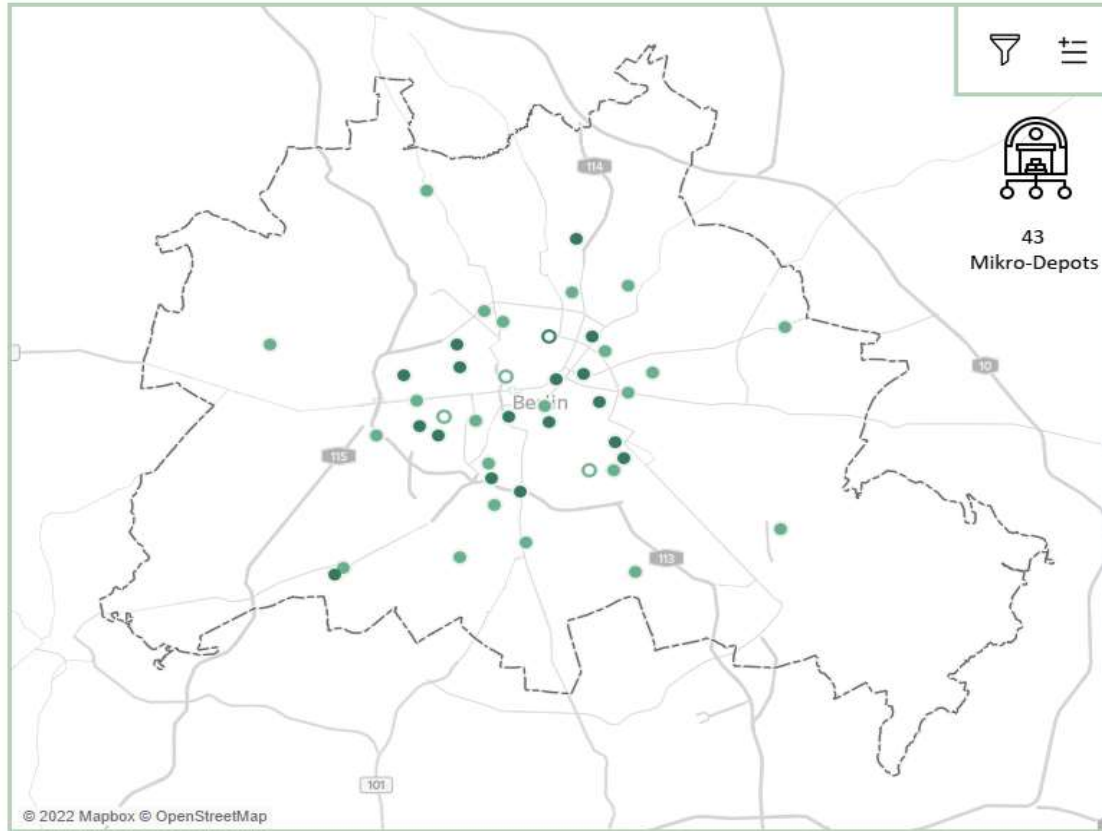
Stand: 30.05.2018 19:22 Uhr

Facebook Twitter Google+ Email WhatsApp

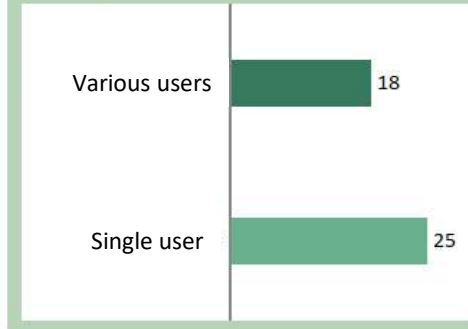
Pakete, die mit dem Fahrrad geliefert werden
- und nicht mehr mit dem Auto: In Berlin
testen fünf große Paketstester ein Jahr lang,



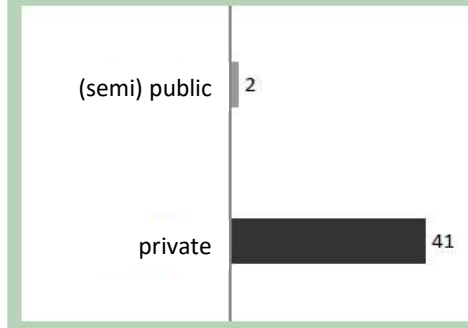
Micro Depots in Berlin (2022)



User structure



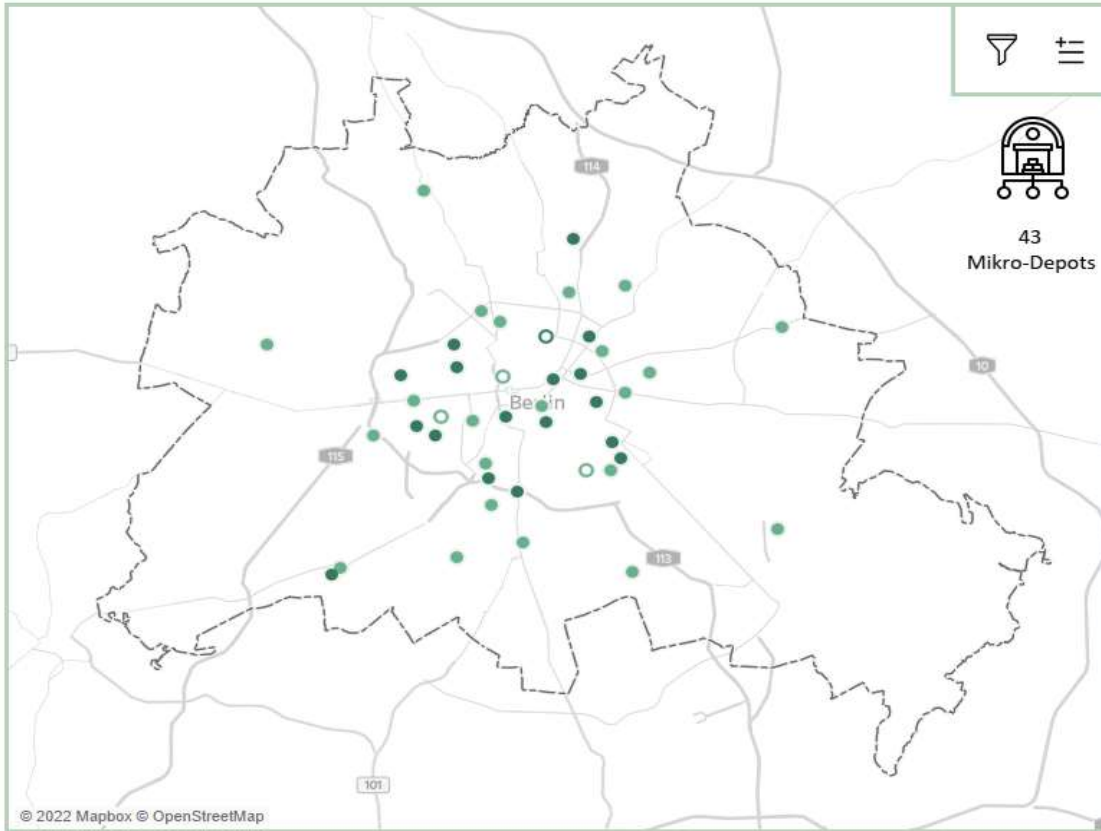
Operator



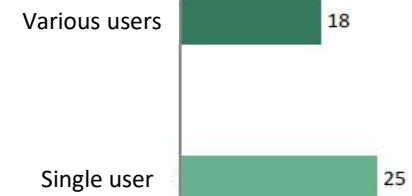
Autoren Wissensbasierte Planung | LNC GmbH | cargobike.jetzt GmbH
 Daten Mikro-Depots: eigene Recherchen | Stand: Dezember 2022



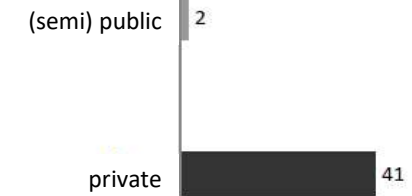
Micro Depots in Berlin (2022)



User structure



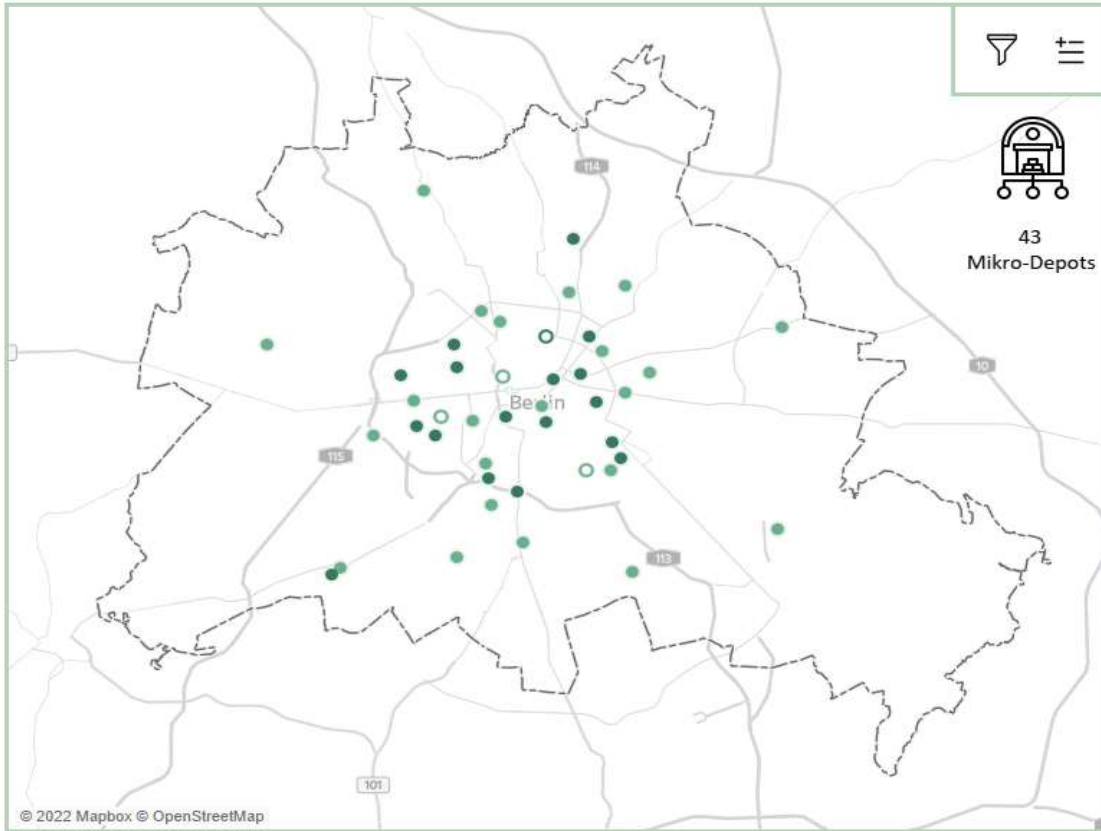
Operator



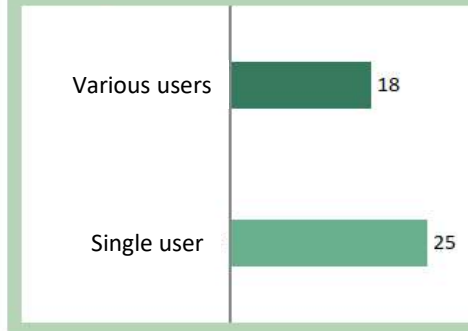
Autoren Wissensbasierte Planung | LNC GmbH | cargobike.jetzt GmbH
Daten Mikro-Depots: eigene Recherchen | Stand: Dezember 2022



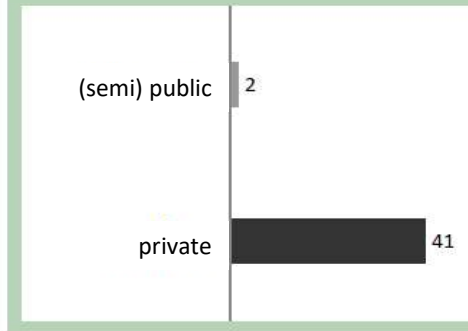
Micro Depots in Berlin (2022)



User structure



Operator



Autoren Wissensbasierte Planung | LNC GmbH | cargobike.jetzt GmbH
Daten Mikro-Depots: eigene Recherchen | Stand: Dezember 2022



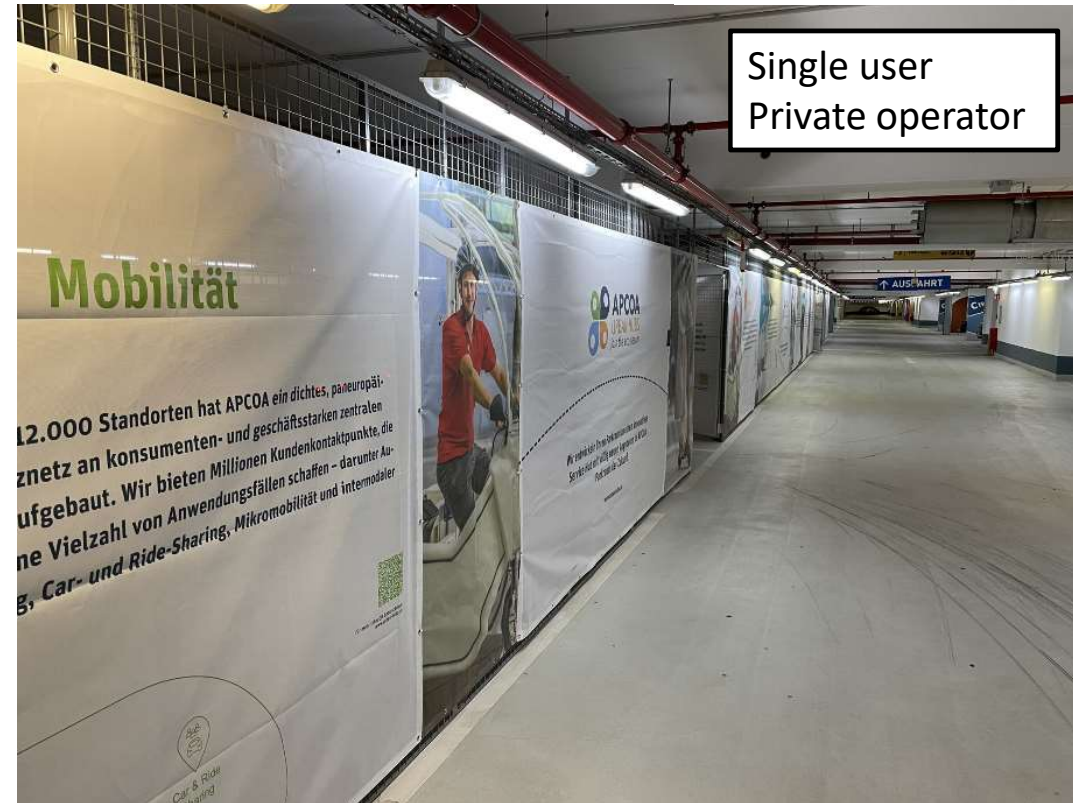
Berlin's logistics hubs: large / medium / small



Single user
Private operator



Berlin's logistics hubs: large / medium / small



Berlin's logistics hubs: large / medium / small



Berlin's logistics hubs: large / medium / small



Berlin's logistics hubs: large / medium / small



Multi-user
Public operator



Hubs exist -
do we want to
watch or steer?

THANK YOU

Senatsverwaltung
für Mobilität, Verkehr,
Klimaschutz und Umwelt

BERLIN

