

MICROHUBS IN BARCELONA

1. BICYCLE MICROHUBS



2. FREIGHT DISTRIBUTION MICROHUBS



Mobility Services
Barcelona City Council

April 2025

1. BICYCLE MICROHUBS



FREE PARKING IN PUBLIC SPACE

Located on single platforms, sidewalks and roads

- Existing: 22.118 U (45.118 slots)
 - Road: 16.573 U (33,146 slots)
 - Sidewalk: 5.986 U (11,972 slots)
- Planned 2025-2026: install 759 U (1518 places)

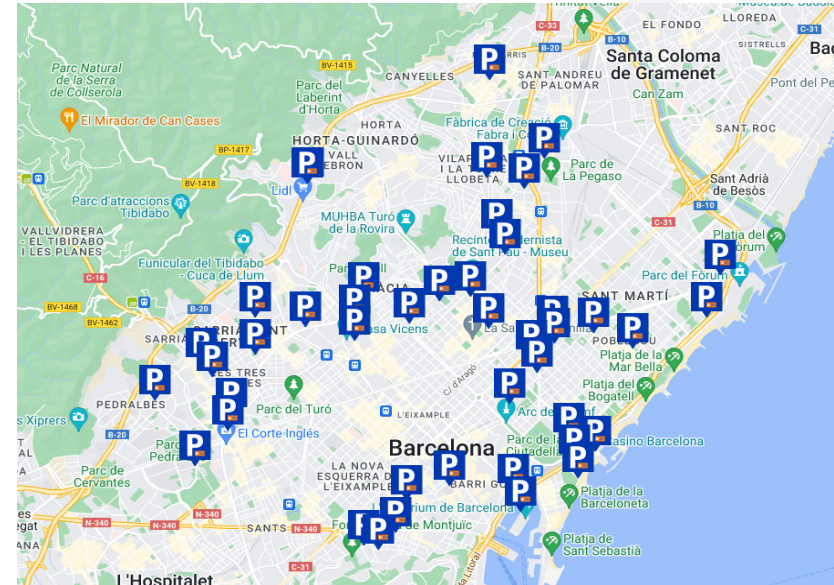
Problems defining strategy and prioritizing:
lack of usage data

Removal of unusable (vandalized) vehicles

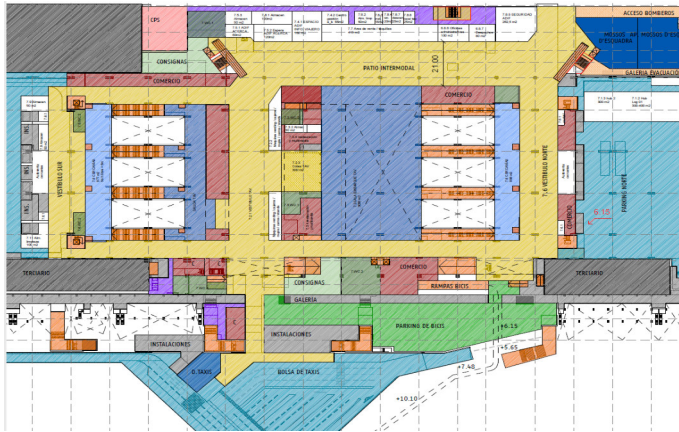


UNDERGROUND PARKING: PUBLIC PARKING BSM- BICIPARK

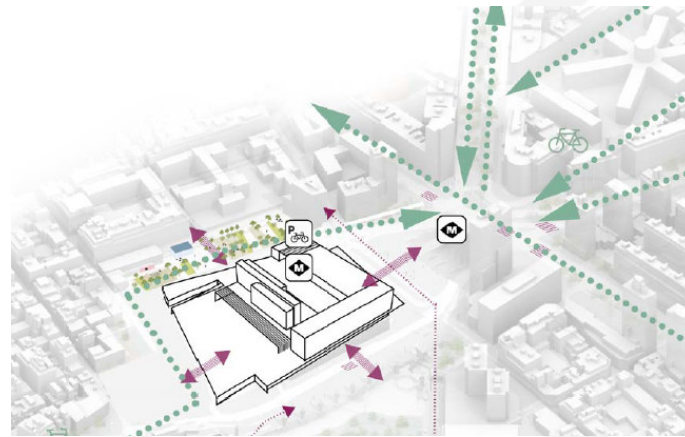
- Within the *Biciparks*, users have access to a tire inflator to take care of their tires. In addition, these spaces will soon be equipped with a small self-repair and bicycle maintenance station with basic tools, thus contributing to safer mobility.
- There are currently six *Biciparks* operating in the car parks.
- Growth forecast.
- To continue contributing to better management of public space and offer comfortable and safe spaces to bicycle users, before summer of next year, Barcelona will double the parking offer for this type of vehicle to up to 600 spaces, through the underground car park network of the municipal company *BSM*.



PUBLIC TRANSPORT INTERMODAL POINTS – RAILWAY STATIONS



New station: *La Sagrera*:
New secure parking for 1.500 bikes



Sants station (remodeling)
New secure parking for bikes



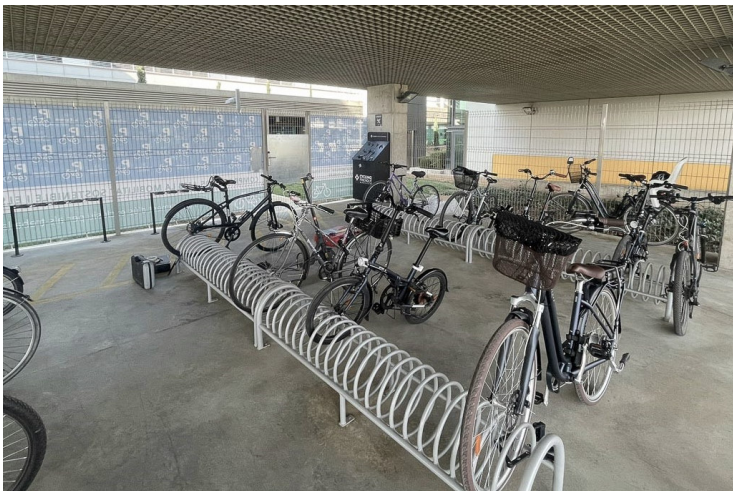
Old station *Sant Andreu Comtal*:
New secure parking for bikes



FGC *Gracia* station
Bike anchors

WORK CENTERS

- It encourages and favors the use of bicycles by guaranteeing the user a safe parking at their workplace
- The *PDE* (Company Travel Plan) among others, aims to promote bicycle travel to the workplace.
- One of the measures/lines to be developed is the provision of safe parking spaces inside workplaces.



EDUCATIONAL CENTERS

COMERCIAL SPACES

Encourage and promote the use of bicycles by guaranteeing users safe parking spaces in commercial spaces.

Encourage the reservation of spaces in existing shopping centers to enable enclosed spaces on ground or underground floors to enable new parking spaces and thus complement the existing offer of parking spaces in the outdoor spaces of shopping centers



Outdoor bicycle parking at *La Maquinista* shopping mall



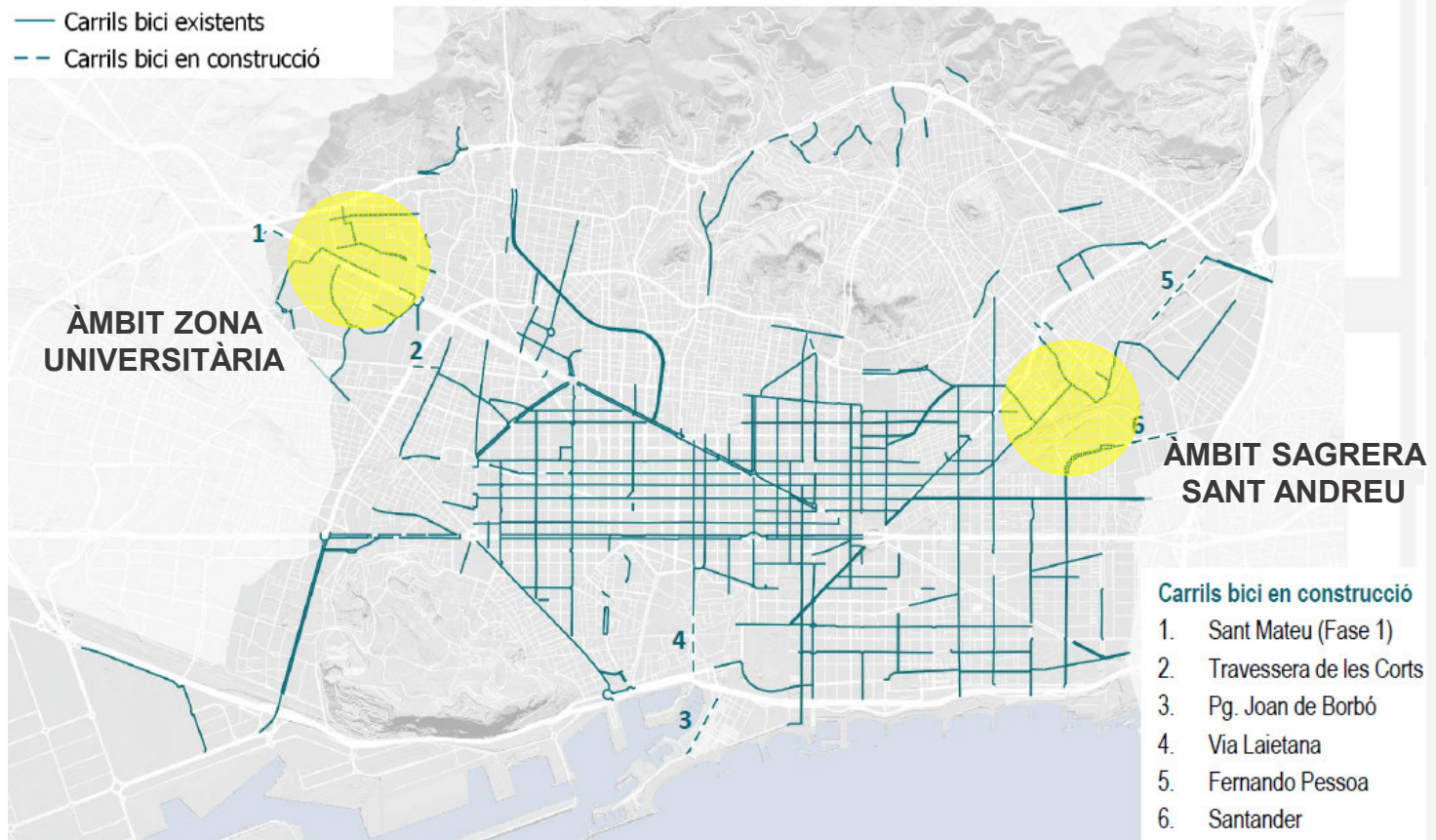
Bicycle parking in *La Borda* housing building

STUDY OF TWO PERIPHERAL AREAS

Xarxa actual segregada

— Carrils bici existents

- - Carrils bici en construcció



STUDY OF TWO PERIPHERAL AREAS – AMB SYSTEM



2. FREIGHT DISTRIBUTION MICROHUBS



FREIGHT DISTRIBUTION STRATEGY

Common **goals**, both for public and private sectors



Encourage **local commerce, economic competitiveness** as well as **efficiency**

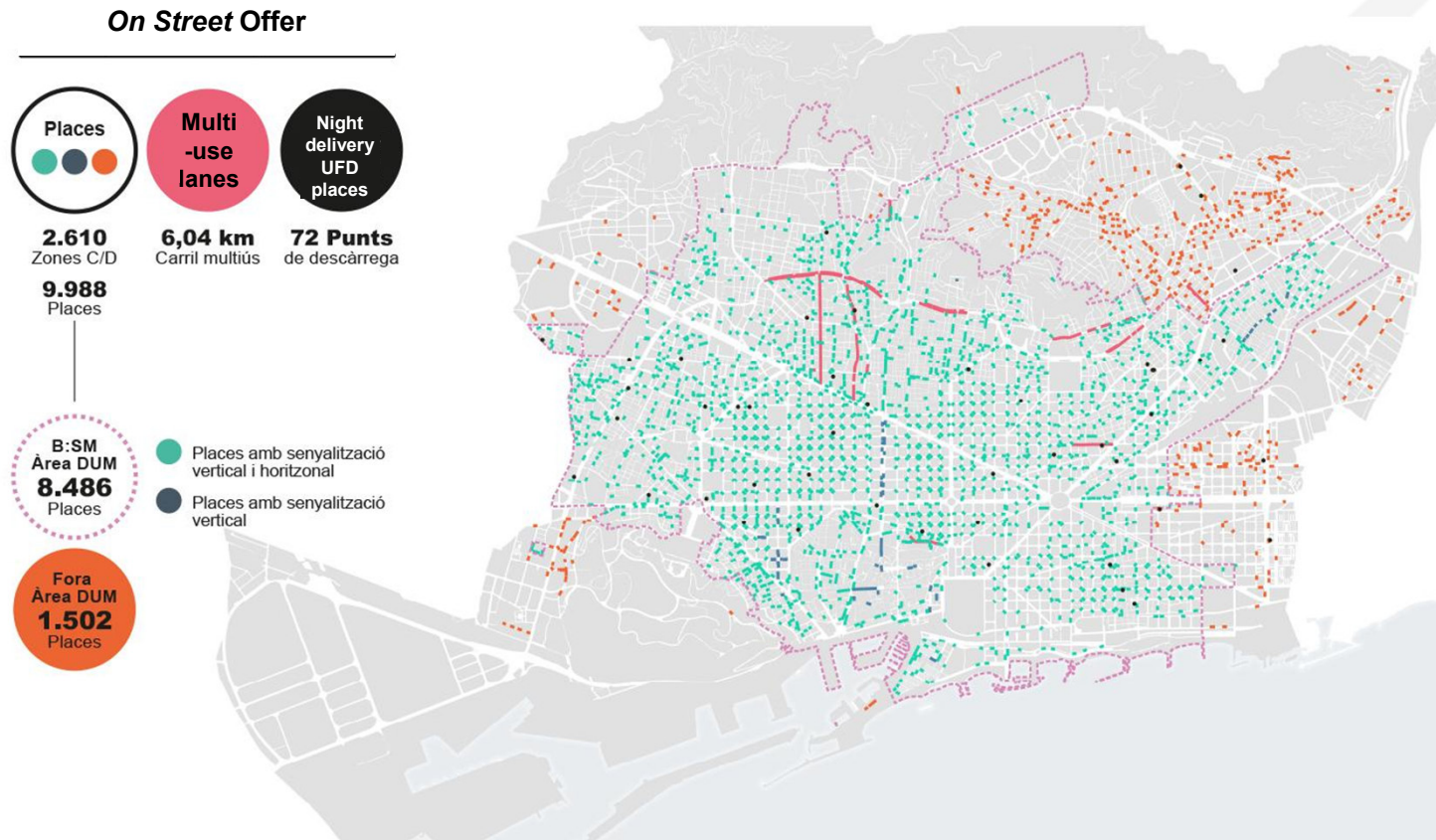


Reducing negative side effects affecting the public space and **reconciling UFD with daily life**



Achieve an efficient, sustainable and safe UFD system

ON STREET INFRASTRUCTURE



Shared among B2B, B2C and DUS, but also with PRM (disabled) as well as private vehicles parked illegally.

OFF STREET INFRASTRUCTURE

Low offer available due to limited space and high prices.

UCC (Urban Consolidation Centres)



- **Vanapedal:** Located in Estació de França (**municipal support**, through european projects)
- **Geever:** collaboration with BSM and SABA

Challenges to maintain its financial viability

MACC (Main Access Consolidation Centre)



- **Railway access**
- We are working in different initiatives with FGC...
- No experience yet

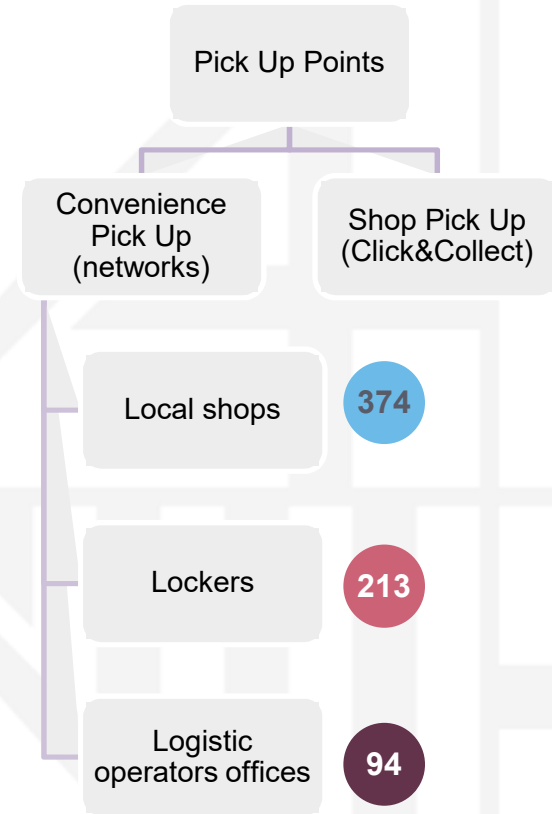
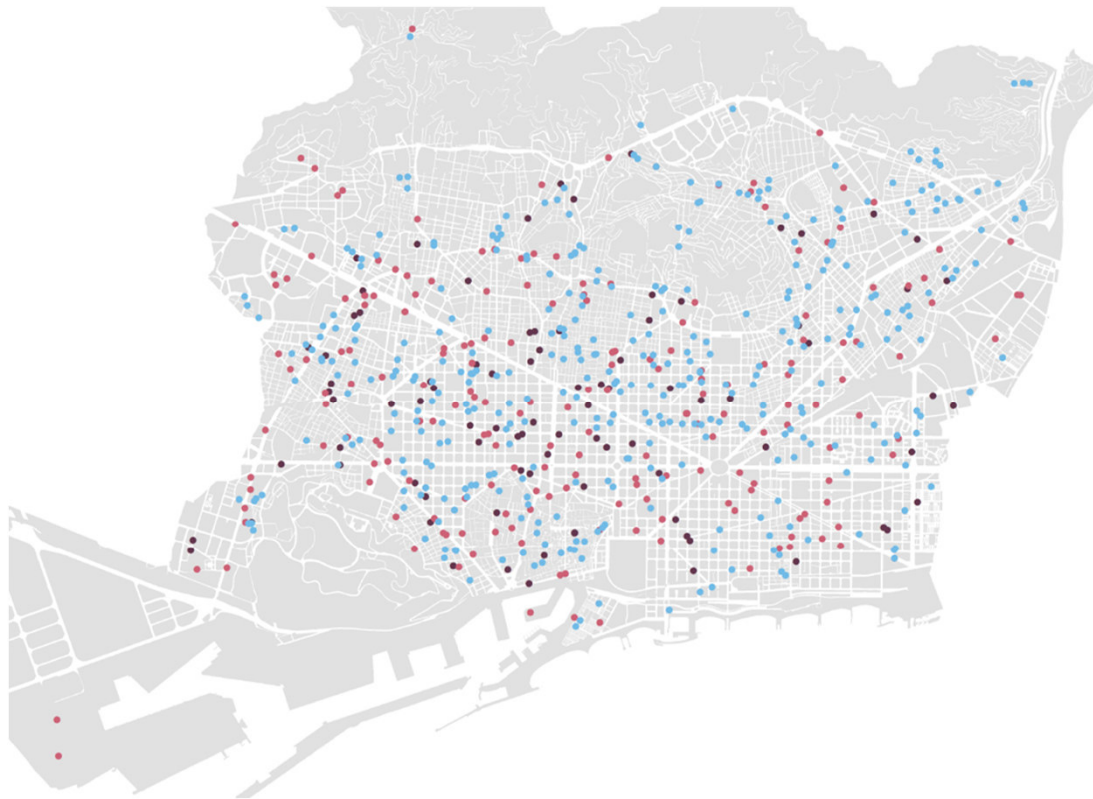
Financial support and access restrictions

Malls, large stores, municipal markets, etc.



- Establishment's **indoor spaces**
- Indoor unloading **docks**, etc.

Pick Up Points: B2C least impact delivery mode.



Overlapped network model	Efficiency loss	Distance increase	Citizens without a reference Pick Up point
---------------------------------	------------------------	--------------------------	---