



# Smart Dublin Overview

Payal Pandya  
payal.pandya@dublincity.ie



OPEN, CONNECTED & ENGAGED

[www.SmartDublin.ie](http://www.SmartDublin.ie)



# Agenda

1. Who we are and how we work
2. Our open data programme
3. A selection of our projects
4. Key Takeaways





## Smart Dublin is an initiative of the four Dublin Local Authorities

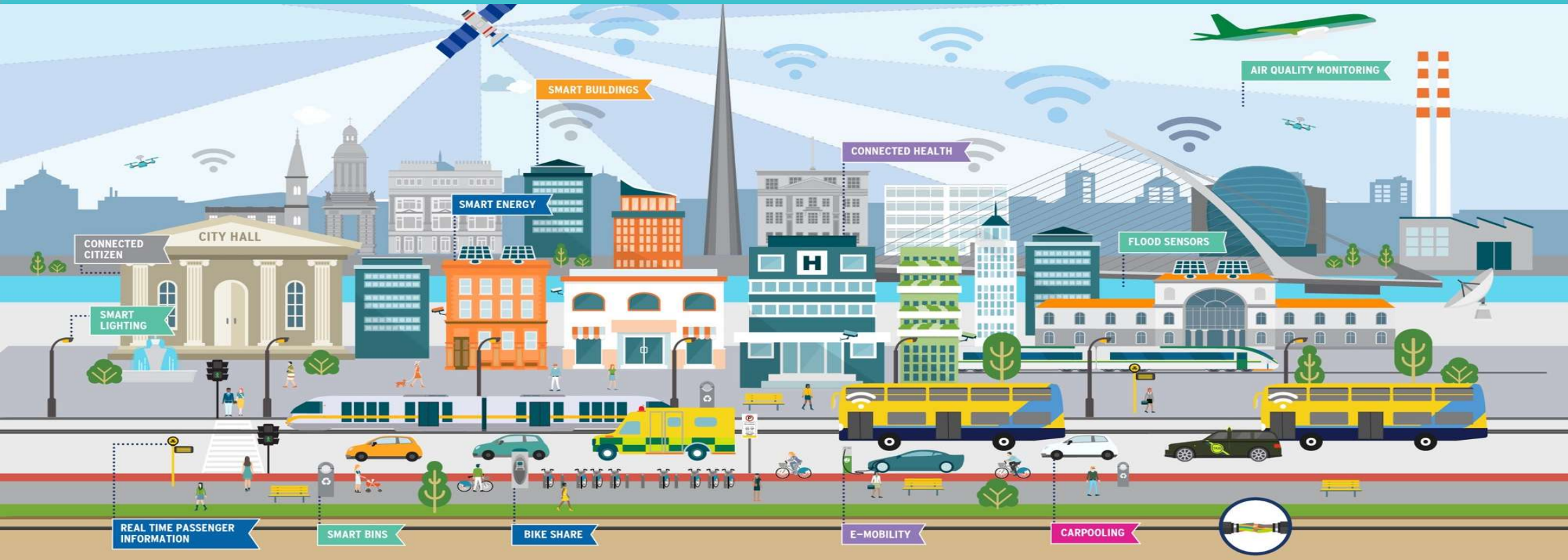


We engage with new technology providers, researchers and the public to improve services and address city-region challenges.





- Challenge based
- Collaboration model
- Data driven



# Dublinked: Open Data for the Dublin Region

Where can you find information on noise levels in the city? Or locations to lock your bike?  
Learn about where you live, work and play using Dublin's open data.



Arts Culture and  
Heritage



Environment and  
Energy



Planning and  
Land Use



Government and  
Participation



Recreation and  
Amenities



Population and  
Communities



Public Health  
and Safety

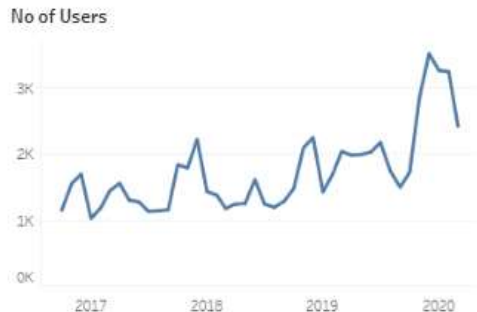


Economy and  
Innovation



Transport and  
Infrastructure

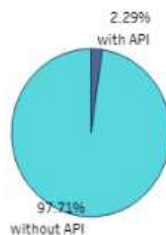
# Dublinked: the Dublin Region Open Data Portal



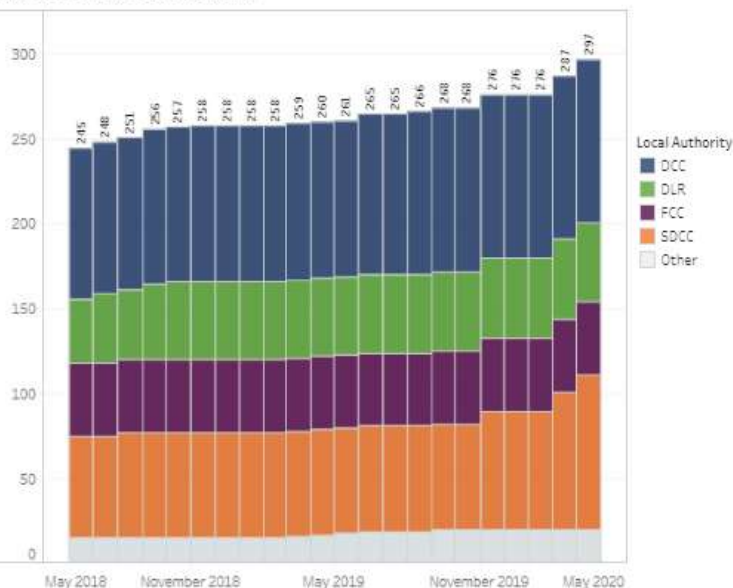
Datasets under Open Licence



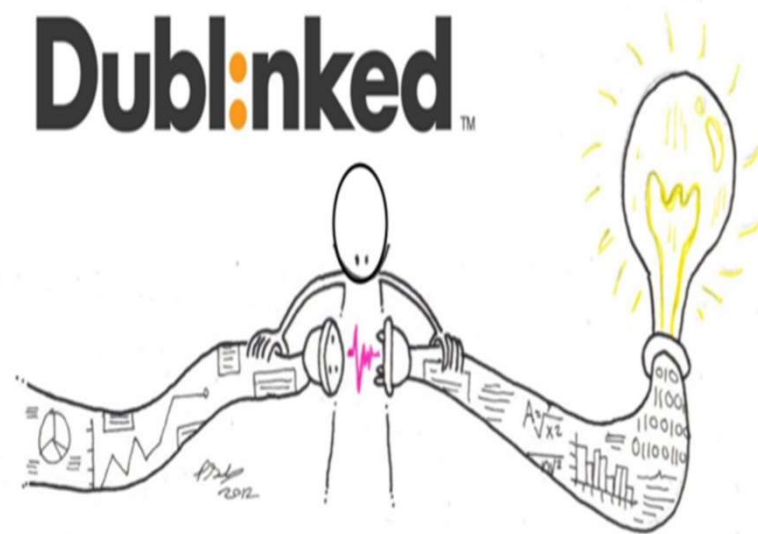
Dataset access



Total Datasets by Local Authority



**Dublinked™**



Datasets Star Rating



New Datasets

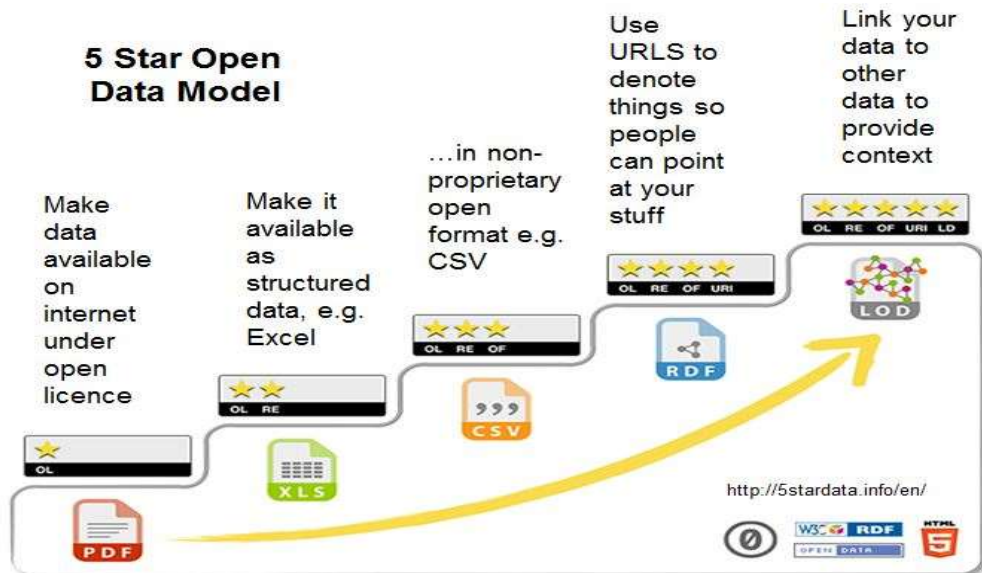
Star Rating	Mar 20	Local Authority	Mar 20
5 Star	0	DCC	0
4 Star	0	DLR	0
3 Star	246	FCC	0
2 Star	14	SDCC	10
1 Star	35	Other	0
0 Star	2		

**Publishing Local Authority Data:  
To promote openness and transparency across  
the Dublin Region.  
For innovation, efficiency and better services.**

# Open Data: What and Why...

## What?

**Open data** is data that can be freely used, re-used and redistributed by anyone- subject only, at most, to the requirement to attribute and share-alike.



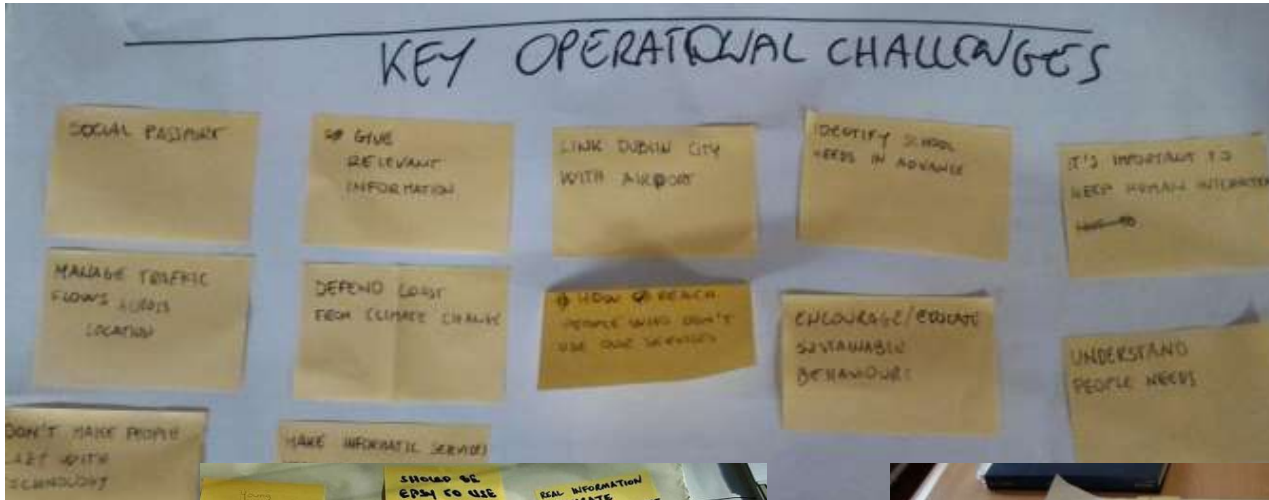
## Policy and legislation framework:

- Open Data Strategy (DPER)
- Open Data Directive (EU)

## PSI Directive approved by European Parliament & Council



# Challenge Based Approach





# SMALL BUSINESS INNOVATION RESEARCH (SBIRs)



## EXECUTING OPEN INNOVATION



### SMART MOBILITY

- ✓ CYCLING
- ✓ WAY FINDING
- ✓ MOBILITY HUB
- ✓ LAST MILE DELIVERY

### SMART ENVIRONMENT



- ✓ ILLEGAL DUMPING
- ✓ GULLY MONITORING
- ✓ BATHING WATER
- ✓ IOT

### SMART PEOPLE

- ✓ UNHEARD VOICES



### SMART LIVING

- ✓ FIRE SAFETY & UNIVERSAL ACCESS IN HISTORIC BUILDINGS
- ✓ AMAZING SPACES, SMART SPACES



**42** INNOVATION CONTRACTS AWARDED



**€1.5M+** INNOVATION FUNDING

**11**



CHALLENGES

IN PARTNERSHIP WITH:



# Project Example: Gully Monitoring

## GULLY MONITORING

SEEKING **SMART**, LOW COST SOLUTIONS...



**CHALLENGE:  
REDUCING  
FLOOD  
RISK**



**SOLUTIONS SOUGHT:  
DETECT OVERFLOWING  
GULLIES IN HIGH RISK  
FLOOD AREAS**



**WITH REAL TIME ALERTS  
& PREDICTIVE ANALYTICS**



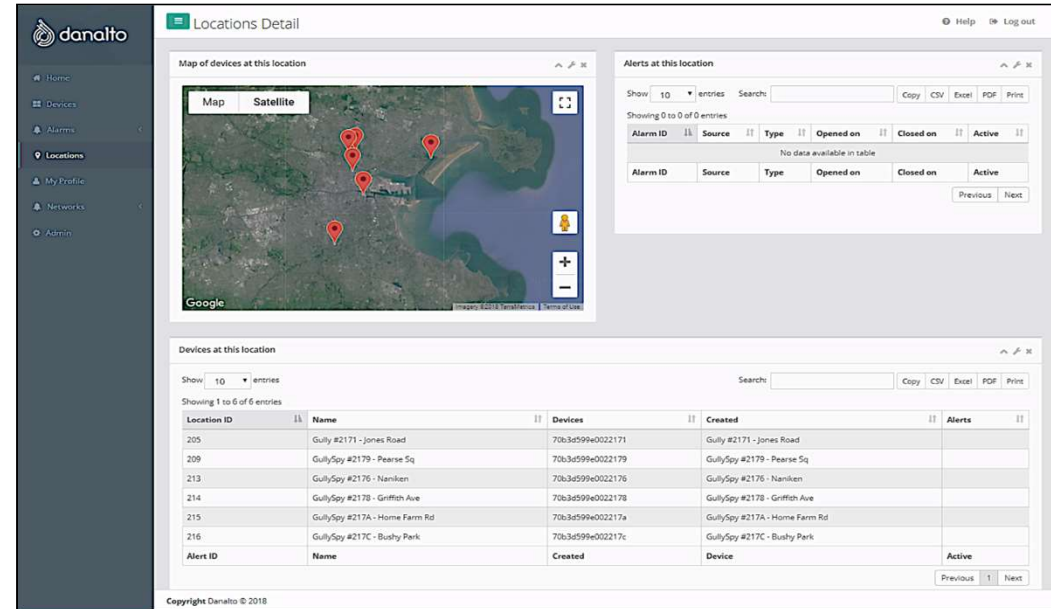
**APPLY HERE: [WWW.SMARTDUBLIN.IE](http://WWW.SMARTDUBLIN.IE)**

**€200,000** IN FUNDING  
AVAILABLE



# Government

## Project Example: Gully Monitoring



Locations Detail

Map of devices at this location

Map Satellite

Alerts at this location

Show 10 entries Search: Copy CSV Excel PDF Print

Showing 0 to 0 of 0 entries

Alarm ID	Source	Type	Opened on	Closed on	Active
No data available in table					

Devices at this location

Show 10 entries Search: Copy CSV Excel PDF Print

Showing 1 to 6 of 6 entries

Location ID	Name	Devices	Created	Alerts
205	Gully #2171 - Jones Road	70b3d599e0022171	Gully #2171 - Jones Road	
209	GullySpy #2179 - Pearse Sq	70b3d599e0022179	GullySpy #2179 - Pearse Sq	
213	GullySpy #2176 - Nankin	70b3d599e0022176	GullySpy #2176 - Nankin	
214	GullySpy #2178 - Griffith Ave	70b3d599e0022178	GullySpy #2178 - Griffith Ave	
215	GullySpy #217A - Home Farm Rd	70b3d599e002217a	GullySpy #217A - Home Farm Rd	
216	GullySpy #217C - Bushy Park	70b3d599e002217c	GullySpy #217C - Bushy Park	

Alert ID Name Devices Created Device Active

Copyright Danalto © 2018

- Gully sensors to be deployed in flooding hotspots
- LA Work Schedule Optimisation (Opex Savings)



SMART  
DUBLIN

# Collaboration Model



Deloitte.

accenture

ARUP

JACOBS

IBM



Research Centres:



Higher Education:



State Agencies:



# Smart Districts Programme



Providing Testbed  
Areas to Trial and Test  
New Solutions

 **SMART DOCKLANDS**  
A Smart Dublin District

 **SMART BALBRIGGAN**  
A Smart Dublin District

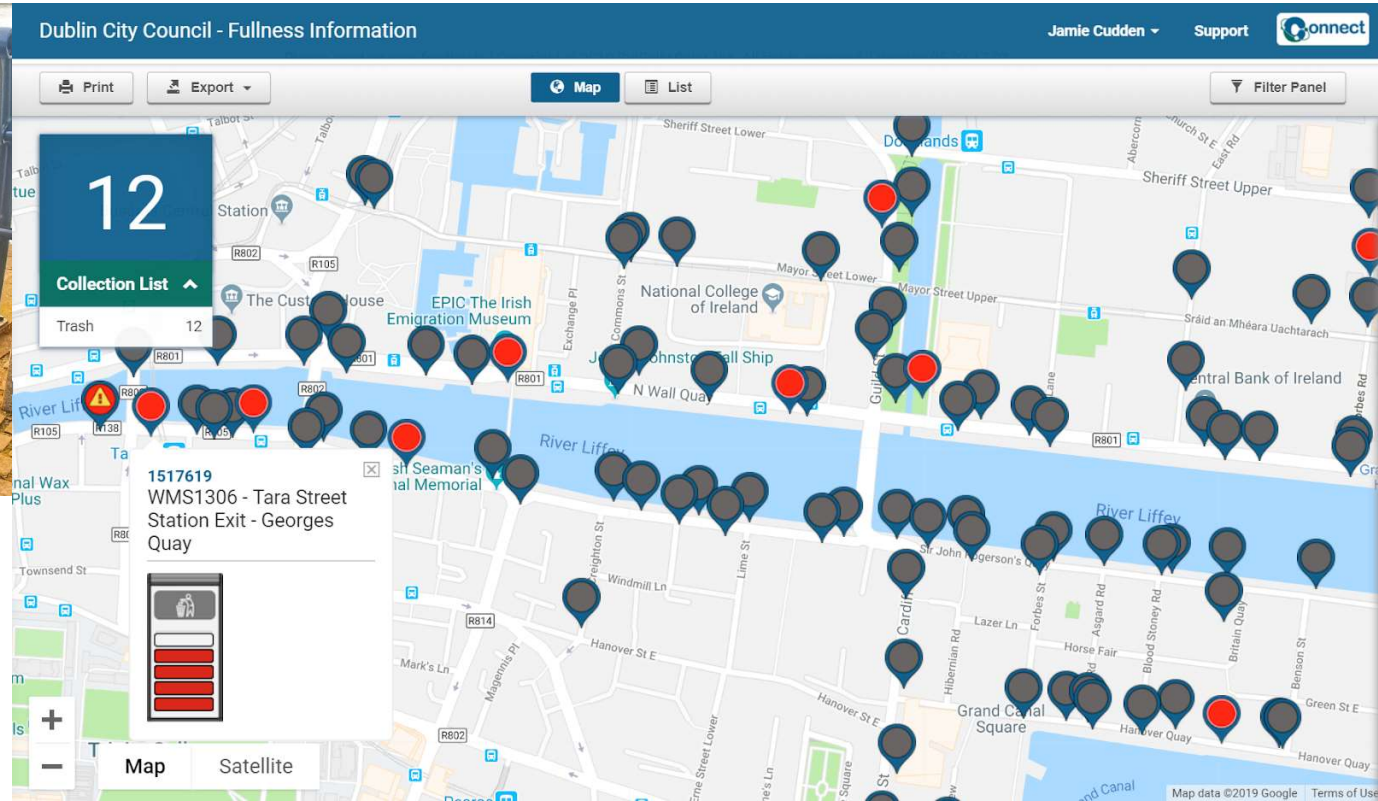
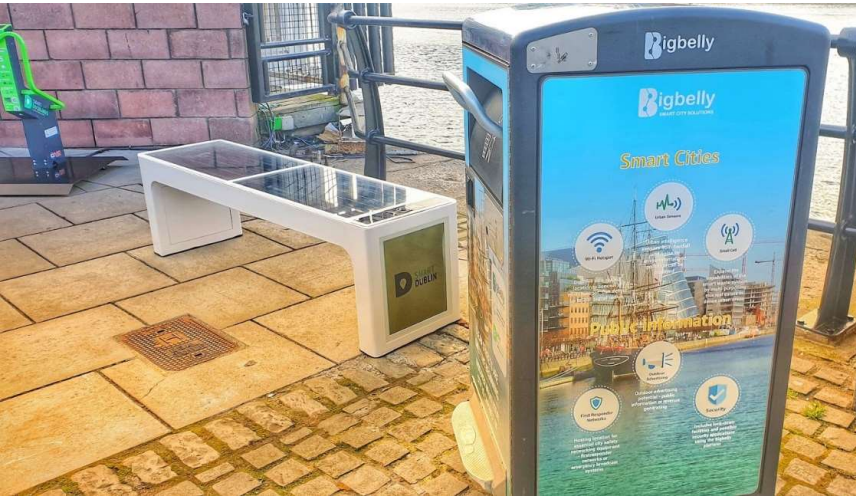
 **SMART SANDYFORD**  
A Smart Dublin District

 **SMART DCU**  
A Smart Dublin District

 **SMART D8**  
A Smart Dublin District

 **SMART DUBLIN**

# Pilot and Test New Solutions



Improving Efficiency &  
Testing New Business Models

# Project Example: Last Mile Delivery

*Brief: Dublin and Belfast are looking for ways to optimise deliveries- reducing the number of goods vehicles, improving congestion, emissions and air quality..*

## LAST MILE DELIVERY

SEEKING **SMART SOLUTION** TO OPTIMISE DELIVERIES...



**CHALLENGE:**  
**OPTIMISING**  
DELIVERIES THROUGH  
**SMART**  
**LOGISTICS**



**REDUCE GOODS**  
**VEHICLES IN**  
**URBAN CENTRES**

**SUPPORTING**  
**LOGISTIC REQUIREMENTS**

**REDUCE EMISSIONS, NOISE POLLUTION**  
**AND CONGESTION**

**APPLY HERE: [WWW.SMARTDUBLIN.IE](http://WWW.SMARTDUBLIN.IE)**



**€230,000** IN FUNDING  
AVAILABLE

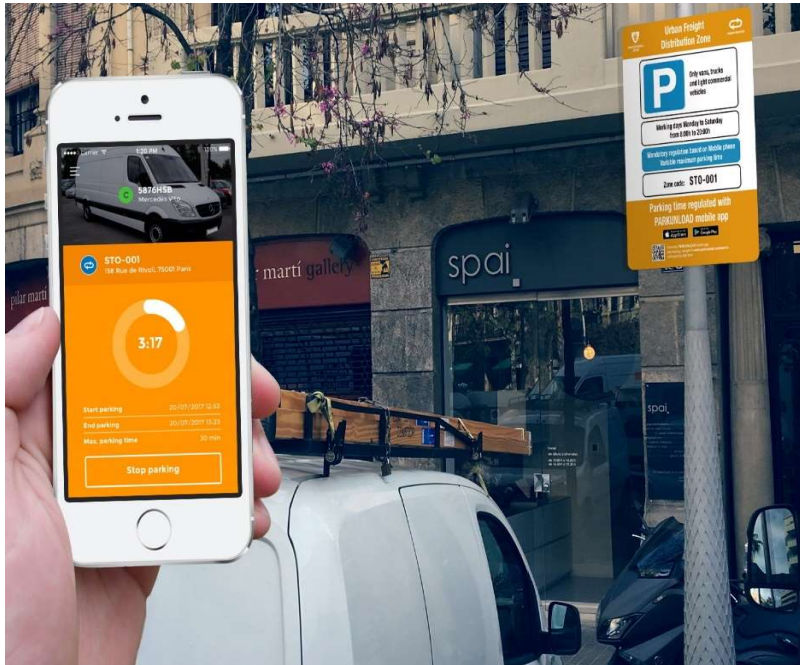


# Project Example: Last Mile Delivery

## Smart loading bays allow cities to flex:

- ✓ Hours of operation
- ✓ Types of vehicles permitted (e.g. low/no emission only)
- ✓ ToU charges

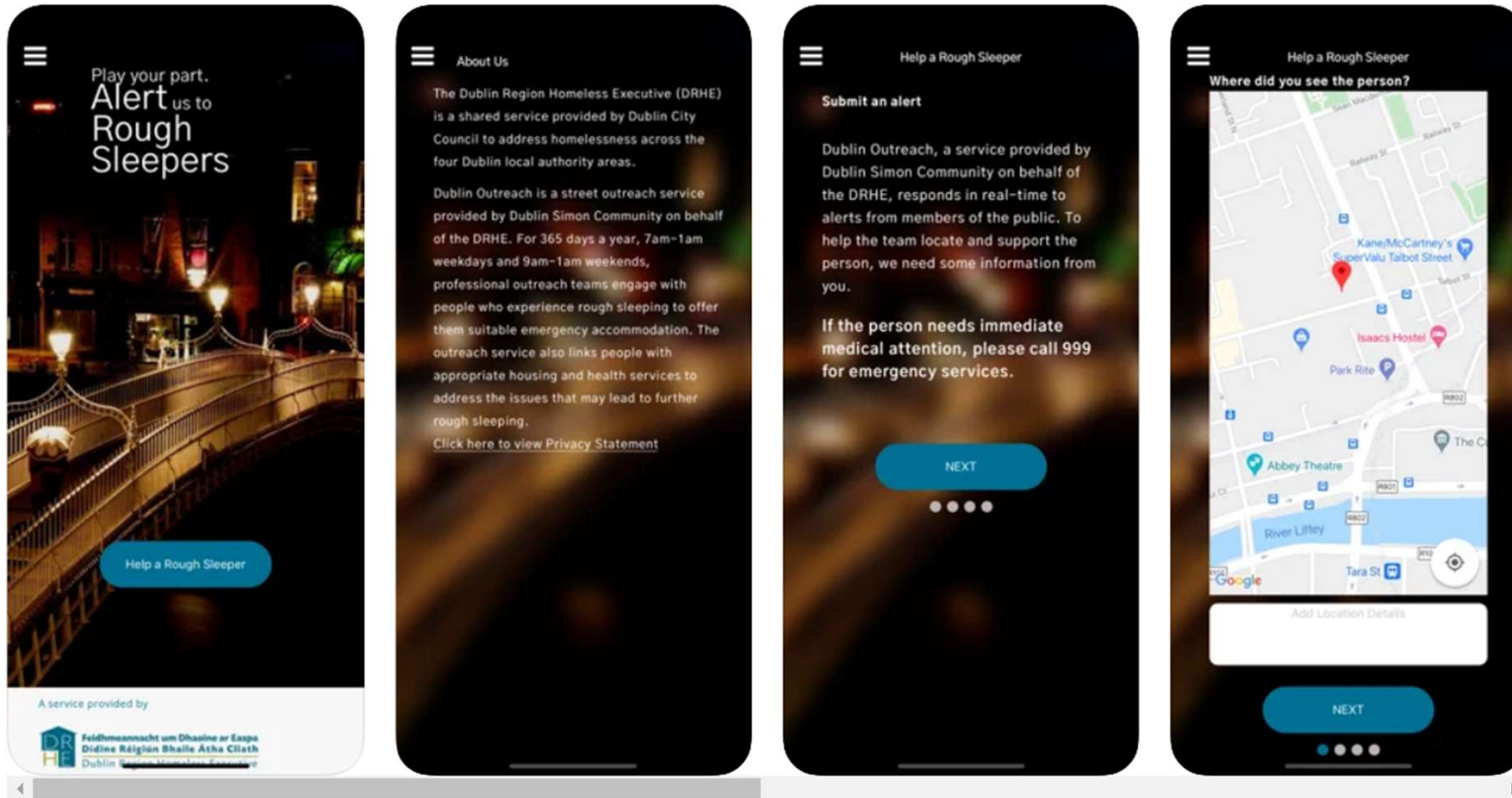
(Image: [Parkunload](#) solution)



- Urban eco package hubs x 2
- Trialling newly designed zero emission vehicles



# Project Example: Rough Sleeper Alert App



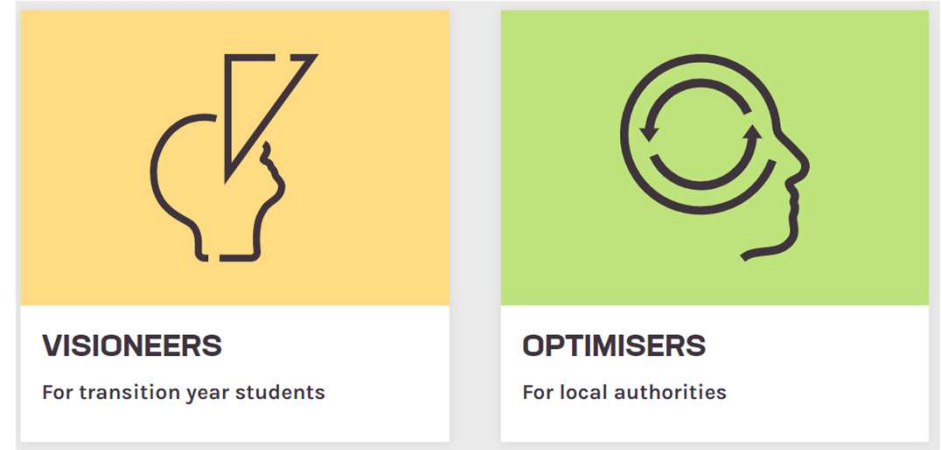
- ✓ UX
- ✓ Data Privacy
- ✓ Comms push
- ✓ 800 alerts since launch Dec 2020

Link to video:  
<https://youtu.be/Y6M5beQzSsI>

# Project Example: Academy of the Near Future

Academy of the Near Future is a smart city education programme for students and local authority professionals offered by **CONNECT** and **Dublin City Council**.

**We exist to accelerate sustainable and inclusive smart city development through awareness, skills, and confidence-building.**



## Visioneers workshops are free:

- A 2-hour smart cities workshop delivered by our expert facilitators
- A set of BBC Micro Bits, which can be kept by your school post-workshop
- A “Micro Bit in the classroom” activity guide
- Solving local challenges using technology

To request a workshop for your Transition Year class, you can contact us via [the website form](#) or email us at [info@nearfuture.ie](mailto:info@nearfuture.ie)

# Project Example: Smart Mobility Hub

Modes:

- EVs
- Ebikes
- Pedal bikes
- Ecargo bikes

Locations:

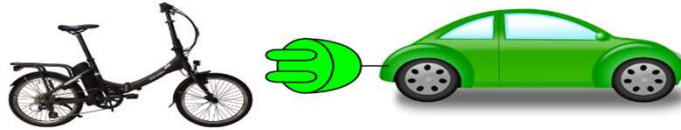
- DCC x 6
- FCC x 2
- SDCC x 1
- DLR x 1

Deliverables include:

- Playbook for any Large Employer
- CBA

## SMART MOBILITY HUB

- FED UP WITH DRIVING IN RUSH HOUR TRAFFIC?
- WISH YOU COULD LEAVE YOUR CAR AT HOME BUT YOU NEED TO USE IT FOR WORK?
- WHY DON'T YOU SIGN UP FOR THE FREE SMART MOBILITY HUB?



LAUNCHING **MAY 8 2019!**

CIVIC OFFICES CAR PARK!

INTEGRATION OF  
E-CARS, E-BIKES,  
PUSHBIKES



DELIVERING SMARTER  
WORKPLACE  
MOBILITY  
FOR STAFF,  
REDUCING EMISSIONS

**SIGN UP NOW**  
**INFO@SMARTDUBLIN.IE**

PLEASE NOTE THE BIKES, EBIKES AND ECARS CAN ONLY BE USED FOR WORK PURPOSES AND CANNOT BE TAKEN HOME OVERNIGHT.



# Dublin Region Open Data Active Travel Challenge

Applications are Open for  
the Dublin Region Open Data  
Active Travel Challenge 2021



For details and to apply see  
[smartdublin.ie](https://smartdublin.ie)

\*See terms and conditions



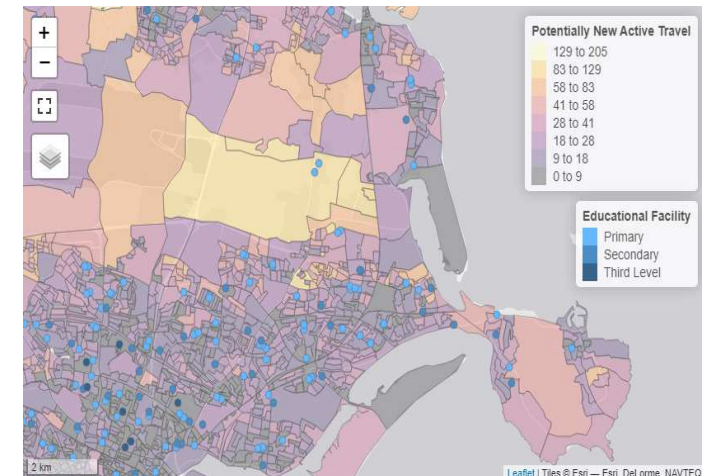
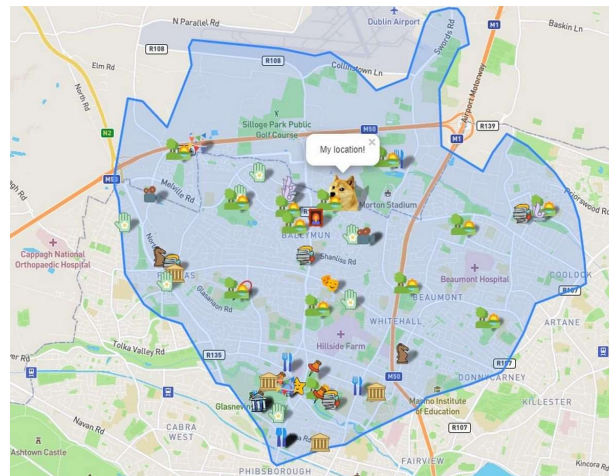
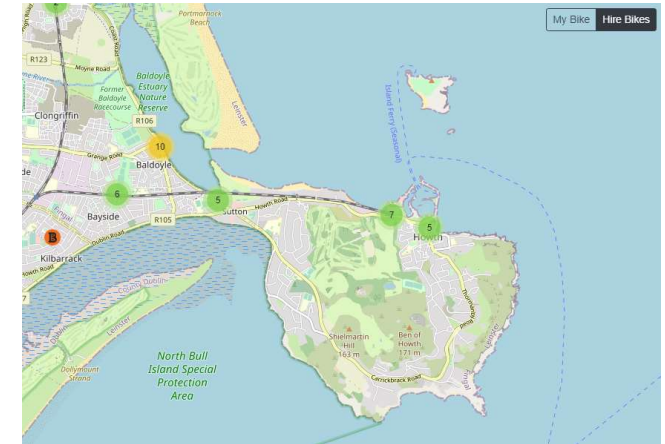
# Active Travel: Final Showcase

## Award Winning Projects

1. **Wheresthecraic.com** (my 15 minute city)
2. **Active Travel to School: Locating Infrastructure for Impact**  
[www.digitalnature.ie/showcase/atc21/](http://www.digitalnature.ie/showcase/atc21/)
3. **Dublinbikeparking.com**

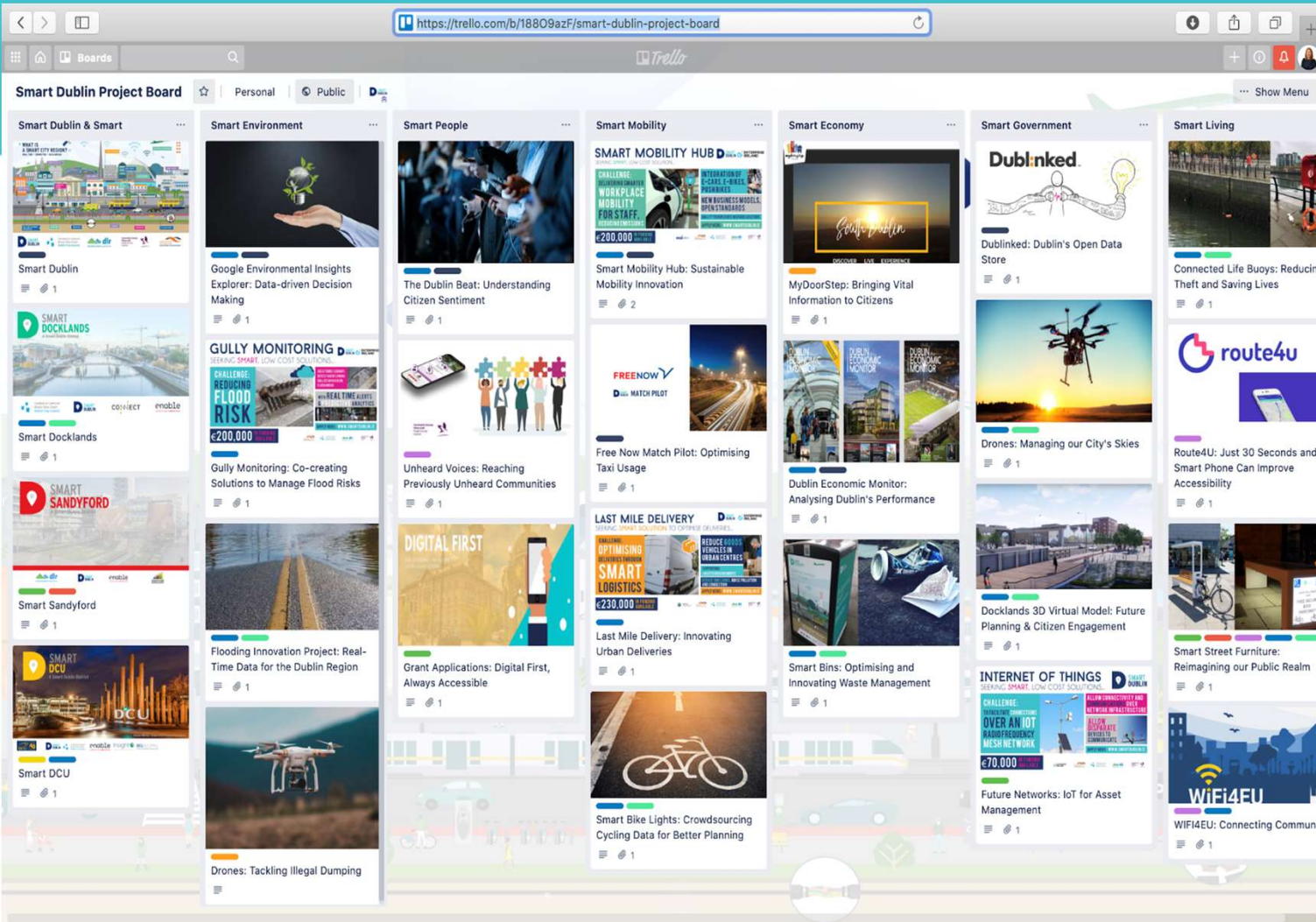
## More info

- ATC Sway:  
<https://sway.office.com/44tq9OKZvcTAKQBj>
- Showcase webinar:  
[www.youtube.com/watch?v=VM413y0c9kU&t=4s](http://www.youtube.com/watch?v=VM413y0c9kU&t=4s)



# Key Take Aways

- ✓ It's about LA service improvement and addressing city-region challenges- enabled by new technology
- ✓ Collaboration model- ecosystem of Citizens, Industry, Academia, Govt.
- ✓ Data and open data is at the heart of our Smart City Programme. Look out for our Climate Action Challenge (2022)



# Stay Connected!

Trello:

<https://smartdublin.ie/smart-dublin-public-trello-board/>

Website

[www.smartdublin.ie](http://www.smartdublin.ie)

Socials

<https://www.linkedin.com/company/smart-dublin/>

Email:

[payal.pandya@dublincity.ie](mailto:payal.pandya@dublincity.ie)