



## Competing for Kerb Space



Comhairle Cathrach  
Bhaile Átha Cliath  
Dublin City Council

# Is Kerbside public or private

- Competitive demands for kerbside – private parking, delivery vehicles, bus and cycle lanes, cab and taxi services, outdoor dining, pedestrian areas and so on.
- Multiple stakeholders and conflicting priorities.
- Static Rules to changing demands.
- For problems like traffic congestion, rise in delivery vehicles, decreasing quality of outdoor life and being future ready.





# Multiple New competing demands







## Problems with current situation

- Car based
- No greening
- No community space
- Space for EVs
- Cycle parking

Pay & Display and permit parking

No green infrastructure or sustainable urban drainage.

Pay and display scheme introduced  
Residents can obtain a parking permit €50 per year  
Generally more residents than spaces



Comhairle Cathrach  
Bhaile Átha Cliath  
Dublin City Council

## ON-STREET PARKING FOR RESIDENTS

To manage on-street car parking to serve the needs of the city alongside the needs of residents, visitors, businesses, kerbside activity and accessible parking requirements, and to facilitate the re-organisation and loss of spaces to serve sustainable development targets such as in relation to, sustainable transport provision, greening initiatives, sustainable urban drainage, access to new developments, or public realm improvements.

# City Development plan



Comhairle Cathrach  
Bhaile Átha Cliath  
Dublin City Council

# Parking management

- 29,000 on street spaces --- 10,000 off street car parks
- Parking as a demand management tool has been used in Dublin since the 90s.
  - Towing and clamping introduced
  - 3 hour maximum stay in city centre
  - 15% reduction in car traffic as a result
  - Residents parking permits
- Proposals to
  - Increase cost of parking permit
  - Require each street scheme to include greening spaces
  - For existing schemes allow residents to request conversion of some spaces for other uses .. Greening... Seating cycle parking .. E charging



“Trees will make this sterile street greener and well maintained parklets will discourage dumping. Benches will provide a place to stop and chat for parents waiting for school children and will provide resting spots for older members of the community”

SUBMISSION NO. 8



Comhairle Cathrach  
Bhaile Átha Cliath  
Dublin City Council







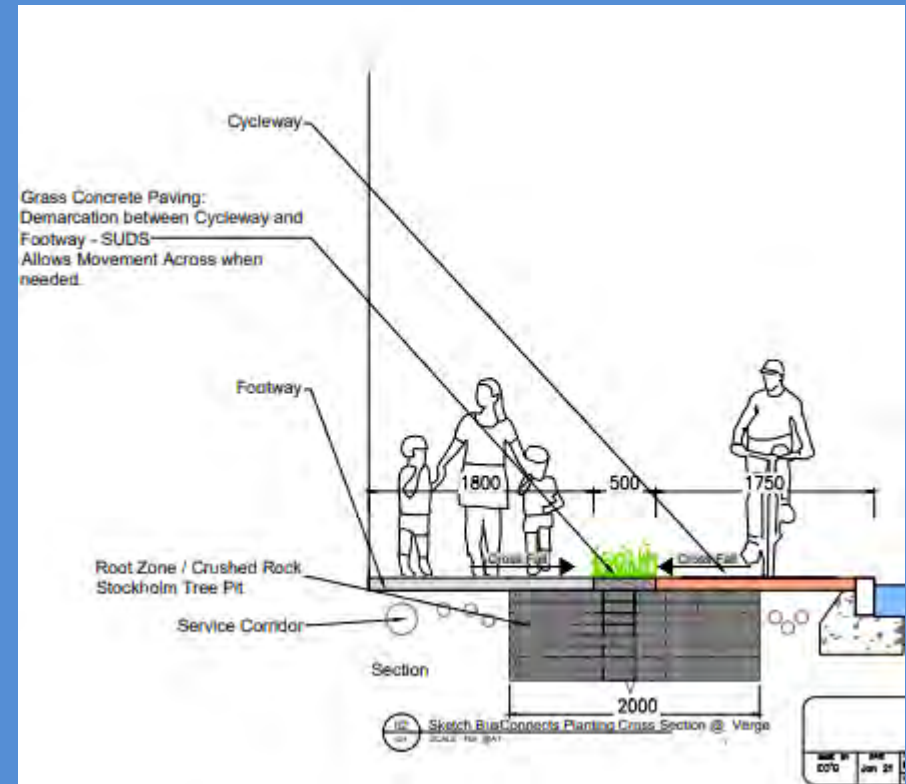
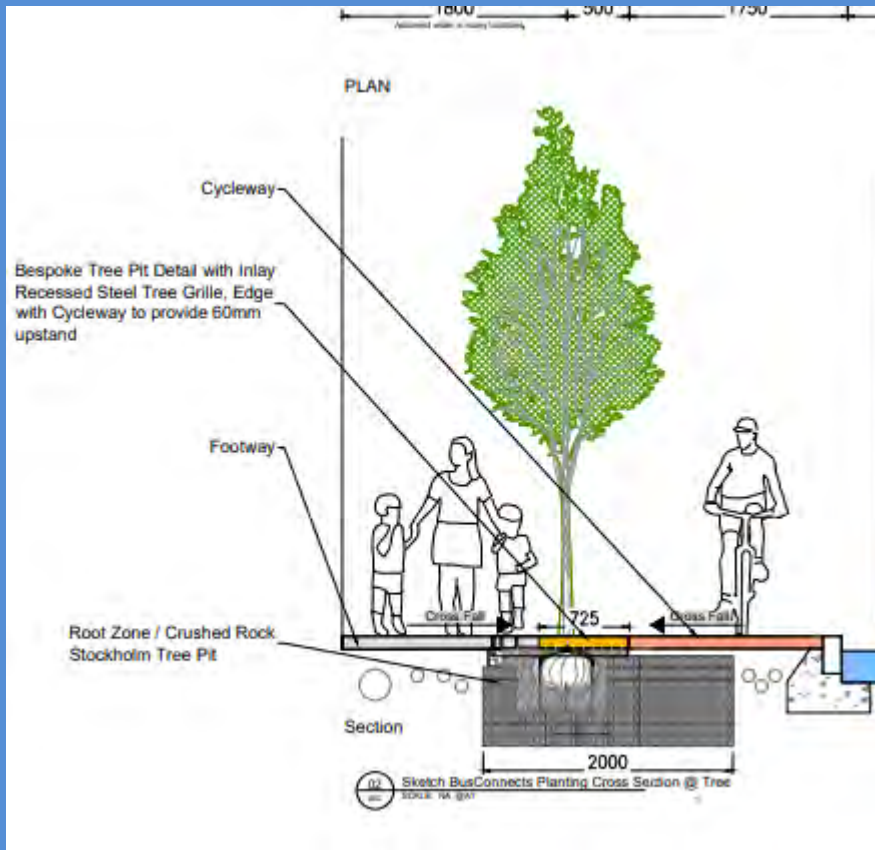


Tree pits are not part of drainage system




Comhairle Cathrach  
Bhaile Átha Cliath  
Dublin City Council

# Green infra incorporated







A young tree with thin, light-colored bark and sparse green leaves is planted in a dark grey rectangular planter. The planter is situated on a paved sidewalk next to a road. In the background, there are buildings, a utility pole, and a clear blue sky. A green semi-transparent box with white text is overlaid on the right side of the image.

This is a project to test options for permanent tree planting on this street.



Comhairle Cathrach  
Bhaile Átha Cliath  
Dublin City Council





Comhairle Cathrach  
Bhaile Átha Cliath  
Dublin City Council









Parking outside schools  
space for cycle parking



Comhairle Cathrach  
Bhaile Átha Cliath  
Dublin City Council







“The people who are against change know who they are and are really against it.

Those who would benefit from change don't know who they are and wouldn't believe you anyways “

*(Professor Stephen Goldsmith  
Harvard university )*

*... and partly from the incredulity of mankind, who do not truly believe in anything new until they have had actual experience of it.”*

*( original quote Machiavelli )*



*(Grange Gorman filtered permeability )*

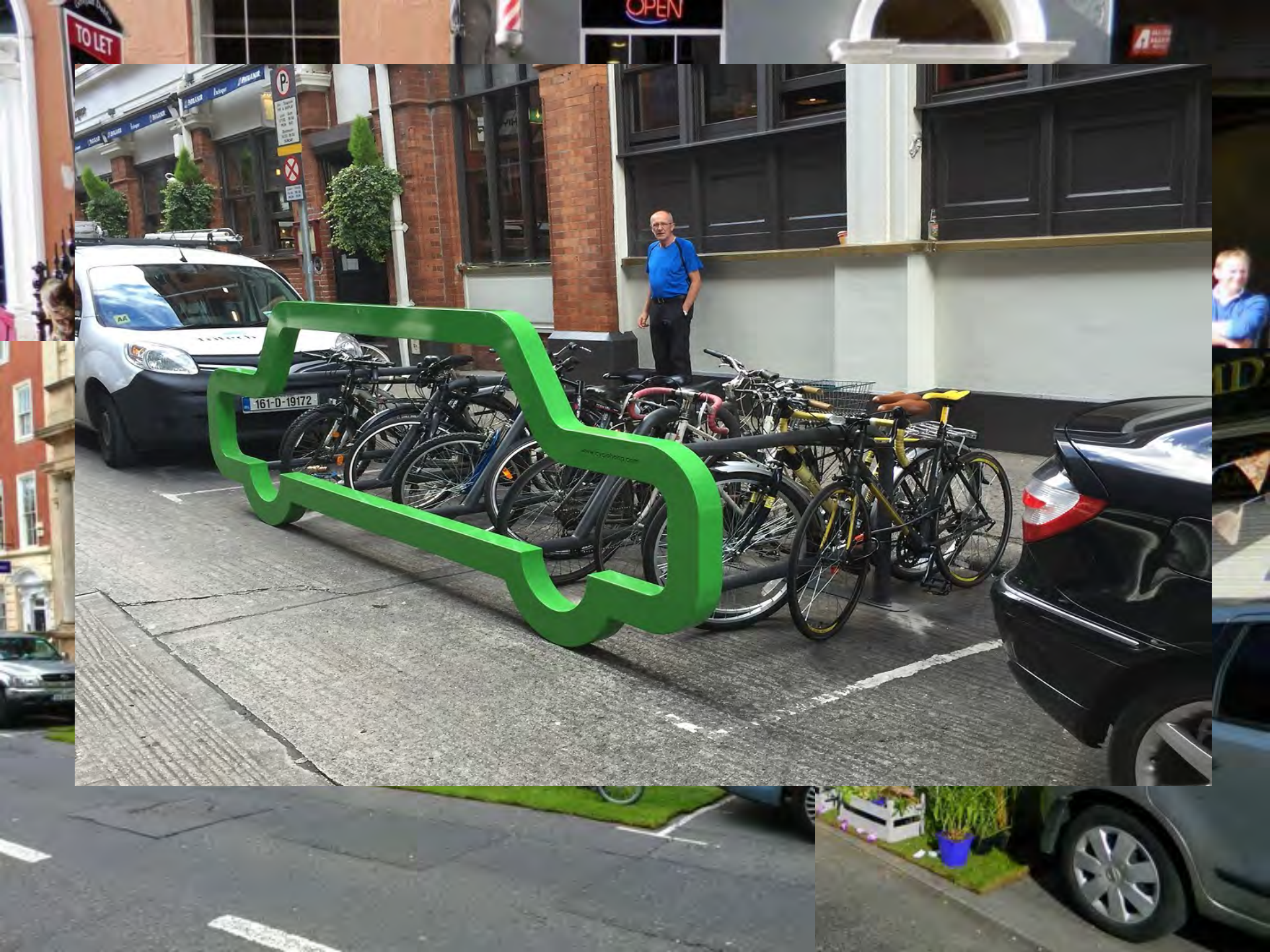


*(South William Street Pedestrianisation trials )*



Comhairle Cathrach  
Bhaile Átha Cliath  
Dublin City Council









Outdoor Dining





Transform a street



Comhairle Cathrach  
Bhaile Átha Cliath  
Dublin City Council

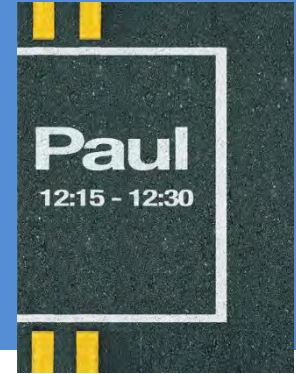




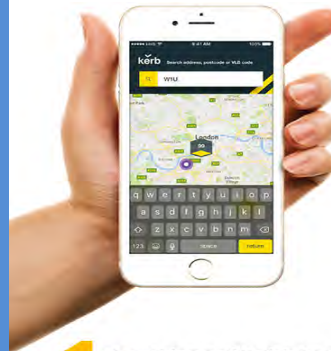
eventually  
everything  
connects

Grid will deploy Virtual Loading Bays in the centre of Dublin, which will be visible on a Smartphone app provided to the commercial vehicle operators that are taking part in the trial.

The pilot will last approximately 4 months. The locations will be determined by the areas in which the commercial Operators struggle to load/unload, and will be agreed with business rules and fees, by the Council.

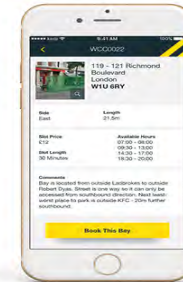


## Book a bay in 3 simple steps...



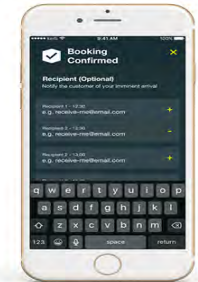
### 1 Searching and Quick Booking

With the Kerb app, drivers/fleet managers can conveniently search for a bay via postcode, address or bay number and quickly book a timeslot of their choosing in a few clicks.



### 2 Bay Details

Drivers/fleet managers can click on a bay to find out more information including dimensions, restrictions and pricing, as well as detailed photographs of the location of the bay.



### 3 Booking and Payment

Bay bookings can be done well in advance as well as on the same day, with available timeslots visible at point of booking. Desired spaces can be confirmed, with emails sent to those that need to be made aware of the booking.



Comhairle Cathrach  
Bhaile Átha Cliath  
Dublin City Council

# What is Senator?



Infrastructure

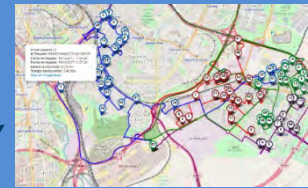


Fleet Mix

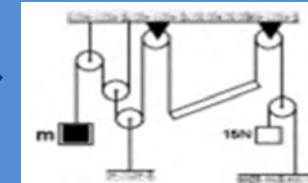


SULMP tool for

- New parking regulations.
- Need for new logistics facilities.



Network optimization



Load balance





# Objectives

1

User demand planning



2

Transport planning



3

Freight & Logistics planning



4

City infrastructure focused



City Councils

Delivery Companies

Citizens

Business



Comhairle Cathrach  
Bhaile Átha Cliath  
Dublin City Council





Thank You