



# **“JELBI” AND “KOMODO” – EXPERIENCES WITH MOBILITY AND LOGISTIC HUBS IN BERLIN**

Dr. Julius Menge

Berlin's Senate Department for the Environment, Transport and Climate  
Protection, Head of Unit for Commercial Transport

## Berlin:

- 3.7 mio inhabitants
- 892 square km
- At its widest, the city stretches for 45 km East to West and 38 km North to South
- 5.481 km public road network
- 1.600.000.000 public transport users (2019)
- 13 million tourists visit the city every year
- 2020 1.450.000 vehicles registered
- 30 % of all German startups have their headquarters in Berlin.

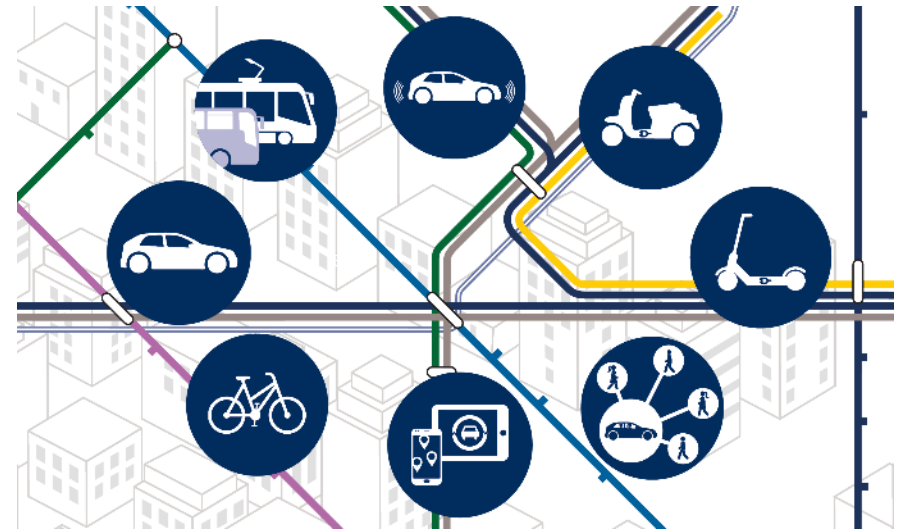


# MOBILITY HUBS – THE JELBI APPROACH TO SHARING



# Jelbi Mobility-Hubs

- Jelbi is run by Berlin's public transport provider BVG (Berliner Verkehrsbetriebe)
- Basic idea: connecting different mobility services in Berlin – from public transport services (Bus, U-Bahn etc.) to new sharing offers using one platform
- Why: Achieve the goals of the “Berliner Mobilitätsgesetz”:
  - enable more people to live without their own car
  - make the alternatives to individual motorized transport more attractive
  - In the entire city of Berlin - not just in the city centre

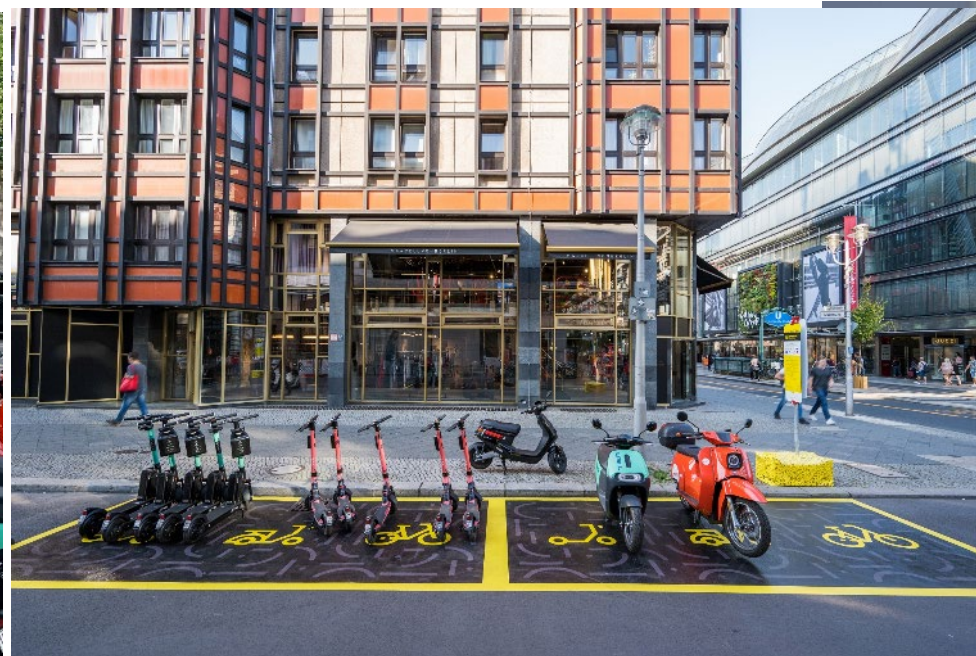




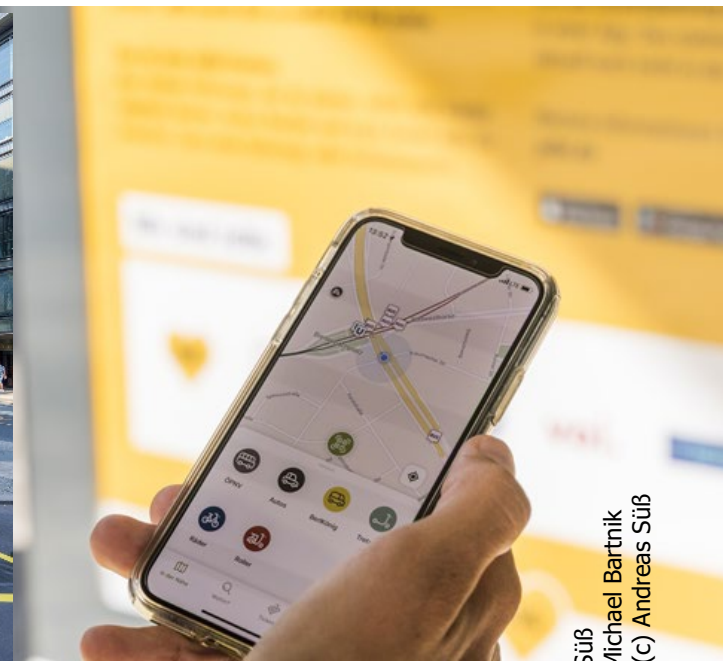
# Jelbi Mobility-Hubs: Jelbi stations / Jelbi points / Jelbi app



Jelbi station U-Bahn Nollendorfplatz



Jelbi point Friedrichstraße



Jelbi app

Pictures:  
BVG Jelbi app (c) Andreas Süß  
Jelbi U Nollendorfplatz (c) Michael Bartnik  
Jelbi-Punkt Friedrichstraße (c) Andreas Süß

**Das Jelbi-Netz wächst: Von Spandau bis Marzahn haben wir**

**inzwischen 36 Jelbi-Punkte und Jelbi-Stationen eröffnet**

BVG

What's the city's role?  
What actions are taken?

Stand 8/2021



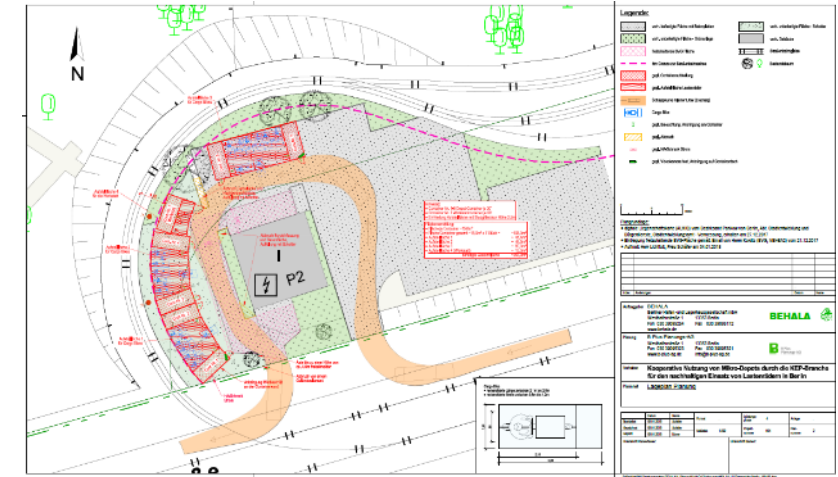
# URBAN LOGISTICS HUBS – THE KOMODO APPROACH







# Project KoMoDo in Berlin



Start in 2018, five major parcel companies, 10 month (official) field test, about 11 cargo cycles in daily service, 3 - 5 km radius, 160.000 parcels delivered using cargo cycles, about 28.000 vkm saved (11 t CO<sub>2</sub>)



# Current developments – from field test to daily practice



# Thank you...

Senatsverwaltung  
für Umwelt, Verkehr  
und Klimaschutz

**BERLIN**

