

Spreading starting times for work and universities, strengthening home office: - experiences from Amsterdam -

Senta Modder

Presentation for IMPACTS
16th of October 2020

XXX Regional accessibility before Covid-19

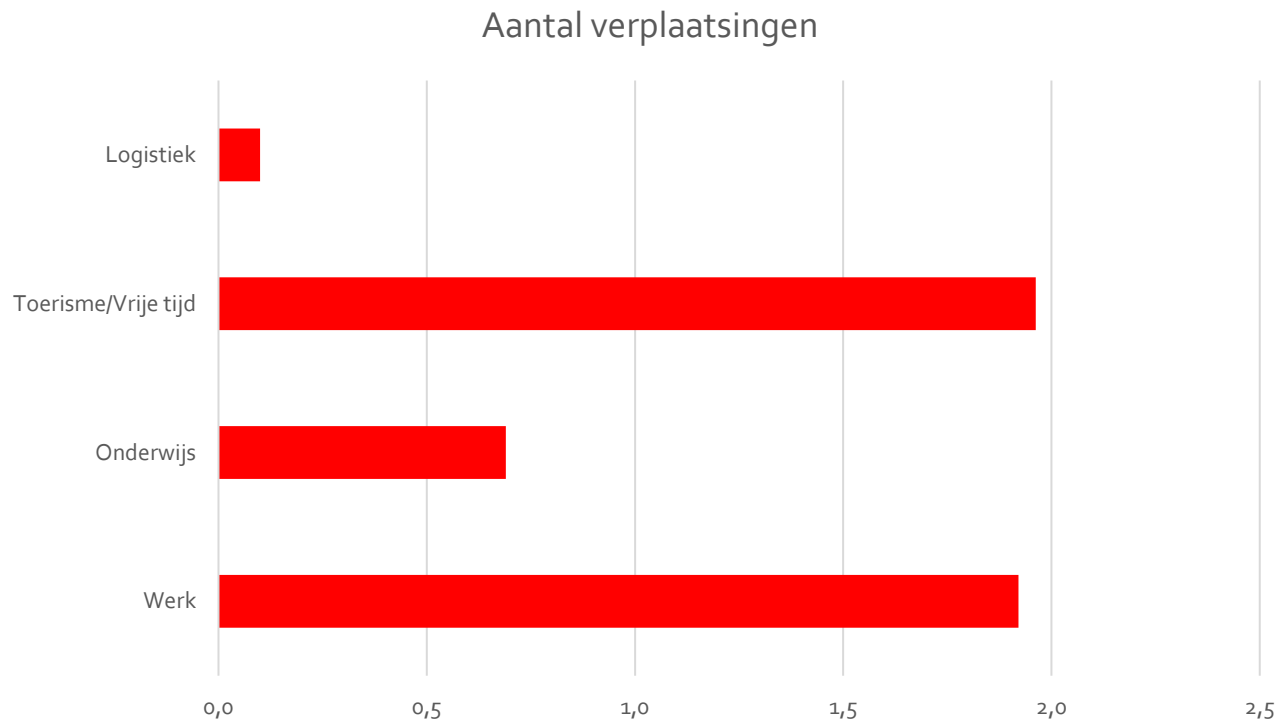
XXX Big challenge

- Capacity limits existing PT infrastructure
- Maintenance work
- New housing (250.000) in region
- Climate agreement



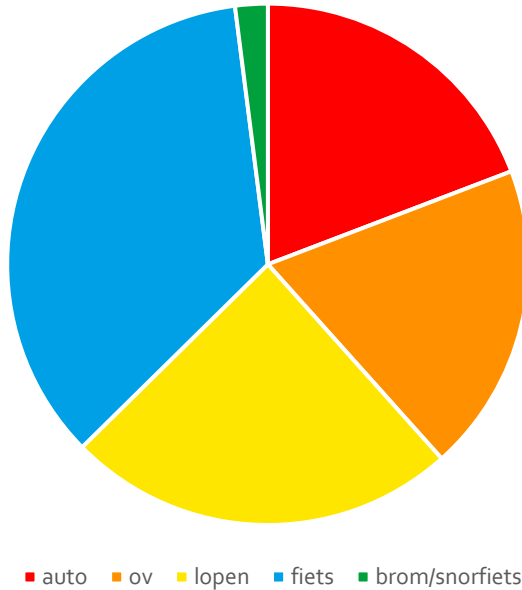


Regional travel pre-Corona (millions)

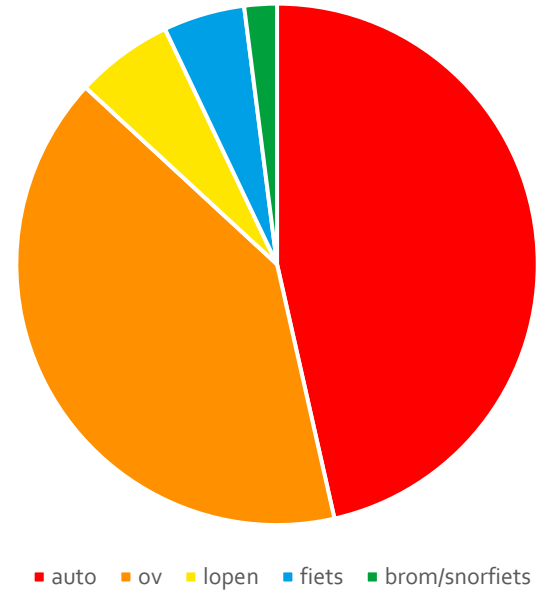


✘ Difference in modes of transport between ✘ residents and visitors Amsterdam ✘

Modal split bewoners per werkdag



Modal split bezoekers per werkdag





Yearly carbon emissions

- Amsterdam (860.000 habitants): ca. 870 kton.
- Regional (2,85 million habitants): ca. 5.000 kton

Major part emissions due to commuting





Recent (week starting 9 september)

In comparison to pre-corona:

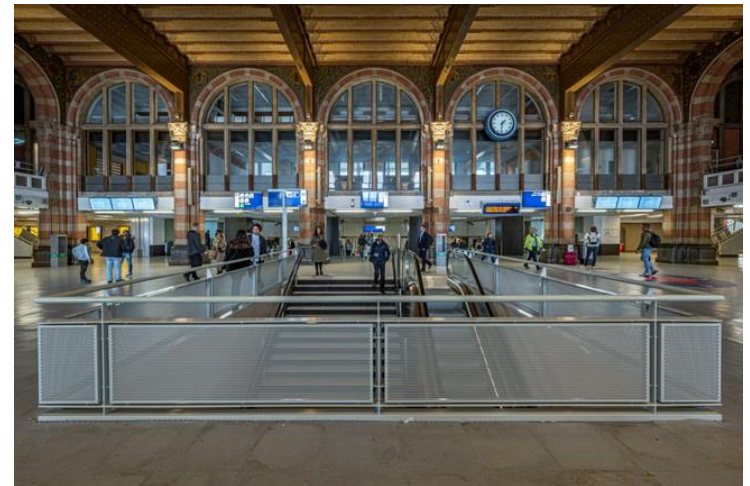
- 65% + bike travel km, 20% + bike rides
- 50% - public transport travelling
- 95% weekdays, weekend 100% of car use .
- Wider spread of car movement (no traffic jams)





Covid-19: extra requirements by emergency measures

- Limited spacial capacity causing and increased pressure by social distancing
- Behavioural change: positive (bike) and negative (more use of cars and less of public transport)
- Solution: Spreading x3 (start and end times), days (home office) and ways of travel





Short term requirement, opportunity for long term

- Short term: safe and responsible traveling (>1,5 m) during Covid-19
- Desired long term effects:
 - Reduce hyper rush hour
 - Less traffic
 - Continued increase use of e-) bike, shared transport and public transport

1 day homeoffice = reduction of 70kton CO₂
(plus economical benefits from less traffic jams
and infrastructural construction)



Approach

- Target groups:
 - Education
 - Employers
 - Logistics
 - Tourism
- *"Spreading... spreading.... Spreading...."*
- Focus on bottlenecks.
- Cooperation of regional partners and national level.





Deals schools/universities (27/8) & employers (24/9)

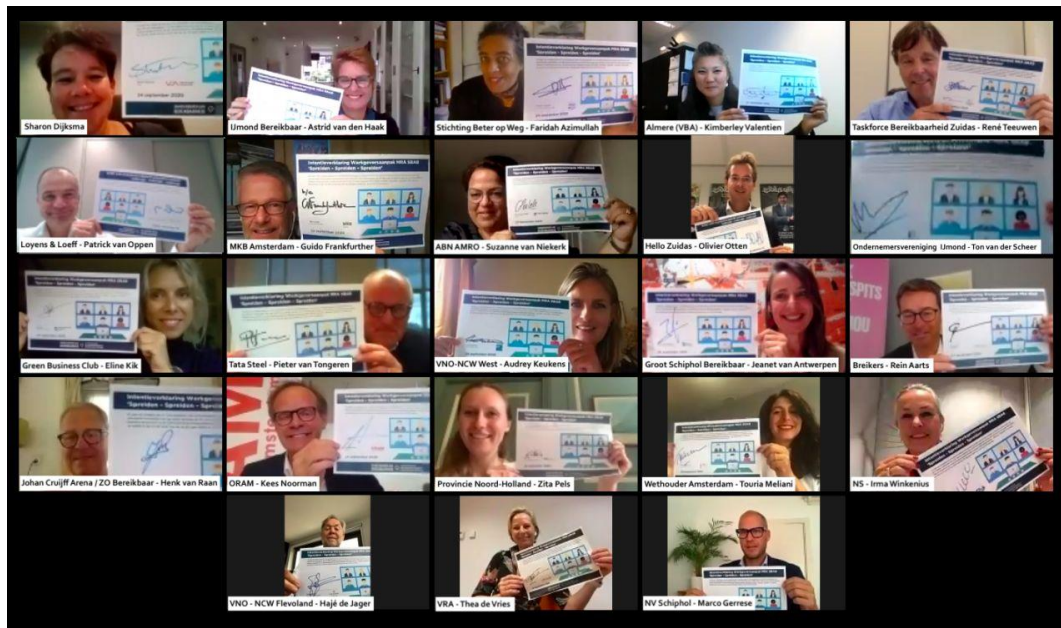
- 160.000 students travel spread in time and weekdays
- Employers (regional) : agreements for working at home, at the office spread in time and weekdays as well as ways of travel (40.000 employees)
- Governmental facilitation
- Enhance both physical investments and facilitate ways of home office working and taking into account health/vitality
- Deal universities was helped by a national protocol, deal employers is voluntary



Sealt the deal 24th of September

Succes factors

- Time is there
- Cost efficiency
- Joint efforts of government and municipalities
- 3-staged approach
- Enthusiastic people



✘ ✘ ✘ Discussion

How do we convince other parties to facilitate working at home, spread travelling, and switch to other modes of travel (biking, PT and shared travel)?

