

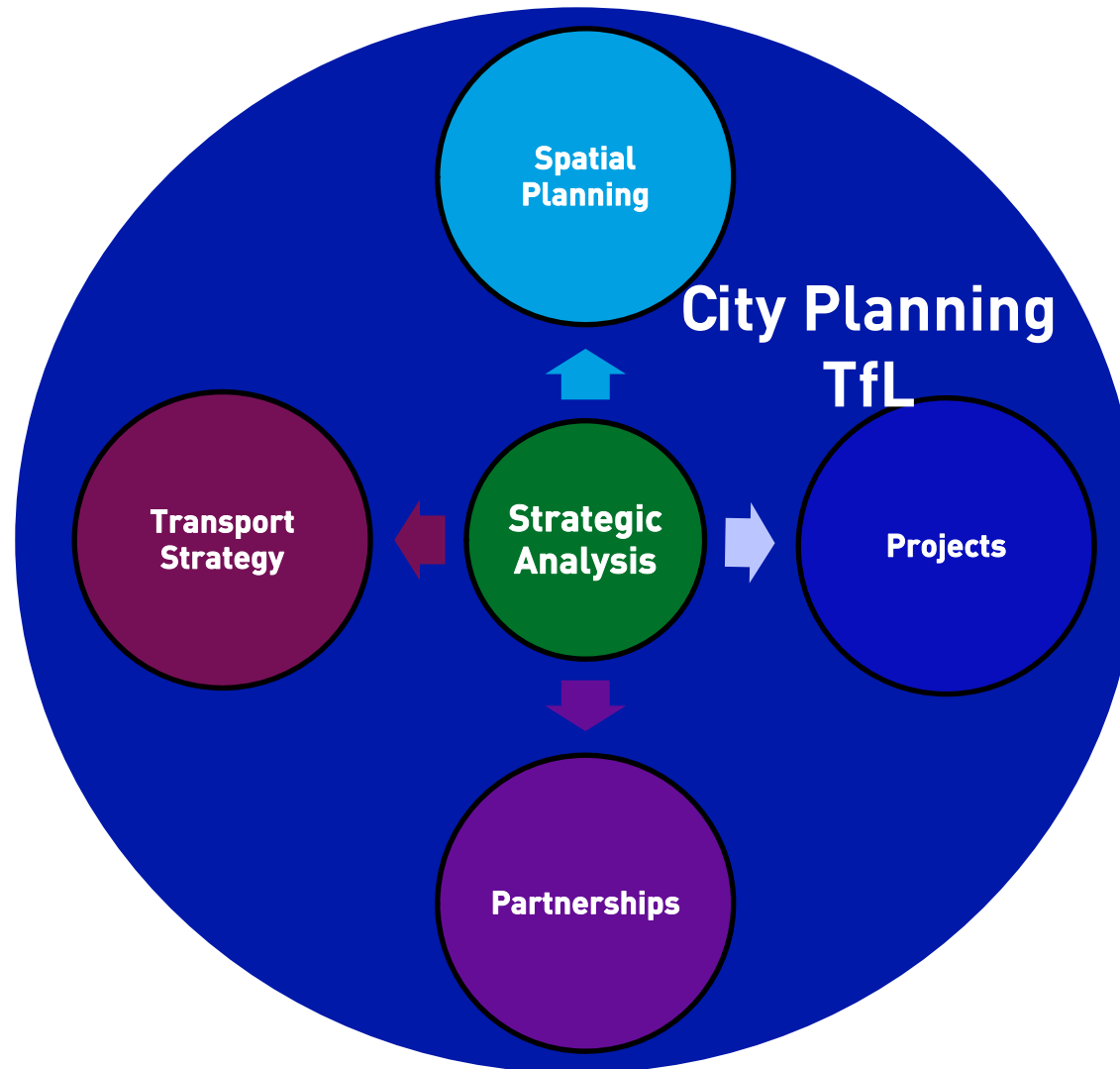
Scenario Planning at TfL: Quantifying Uncertainty

Simon Nielsen
Head of Strategic Analysis
Transport for London

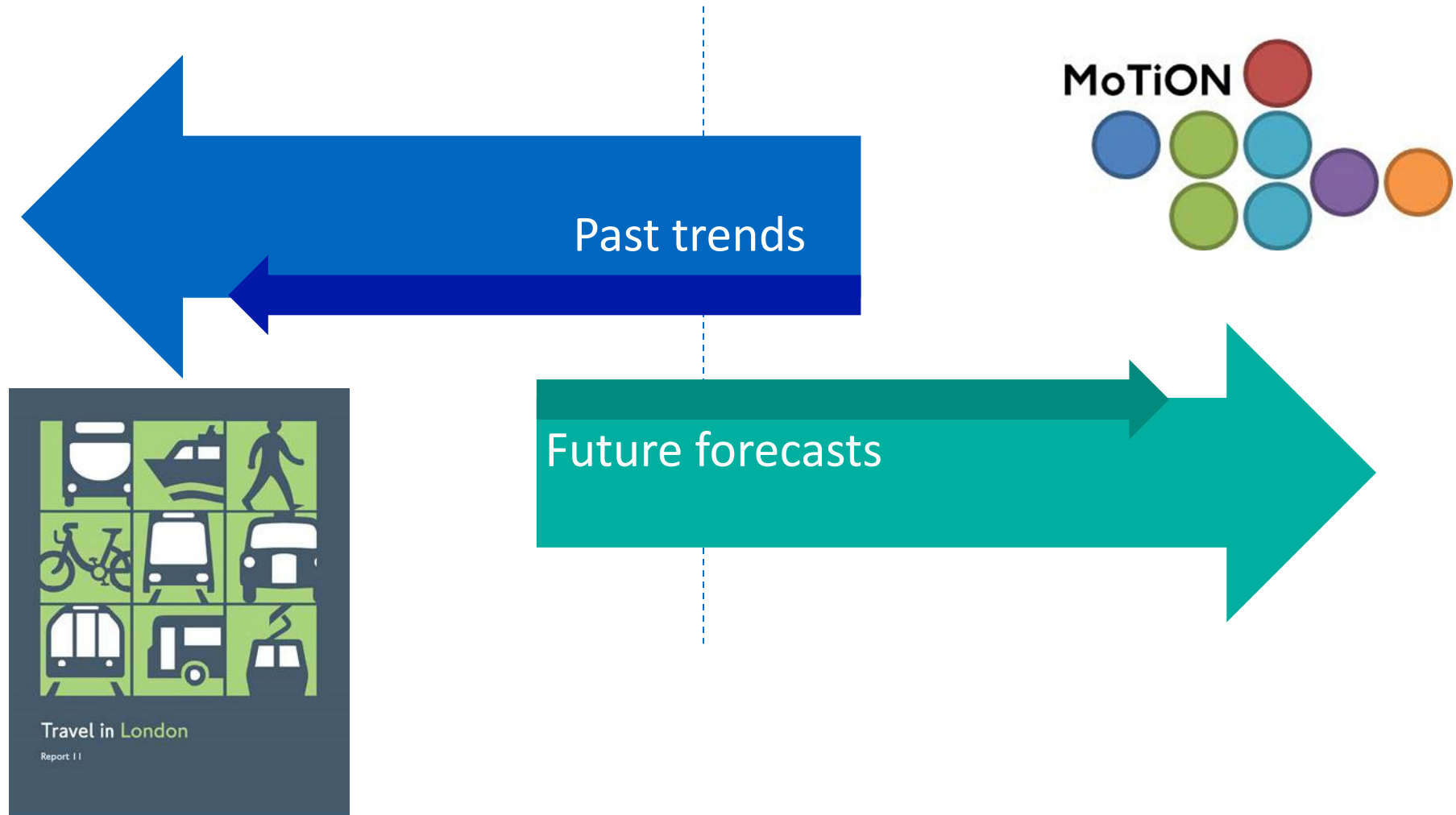


EVERY JOURNEY MATTERS

Strategic Analysis



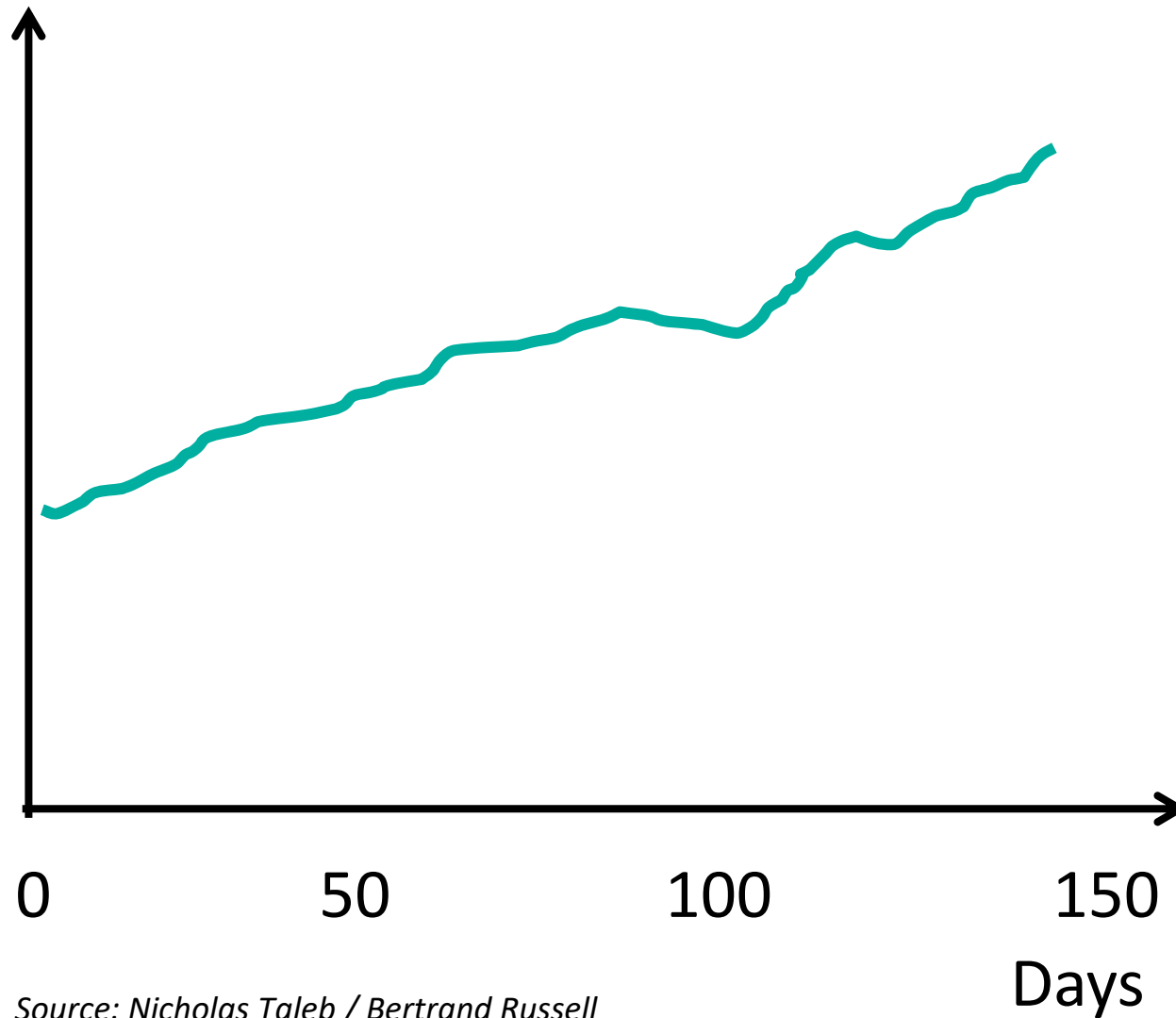
Strategic Analysis – analysing past trends to inform future forecasts



Tomorrow,
another yesterday?



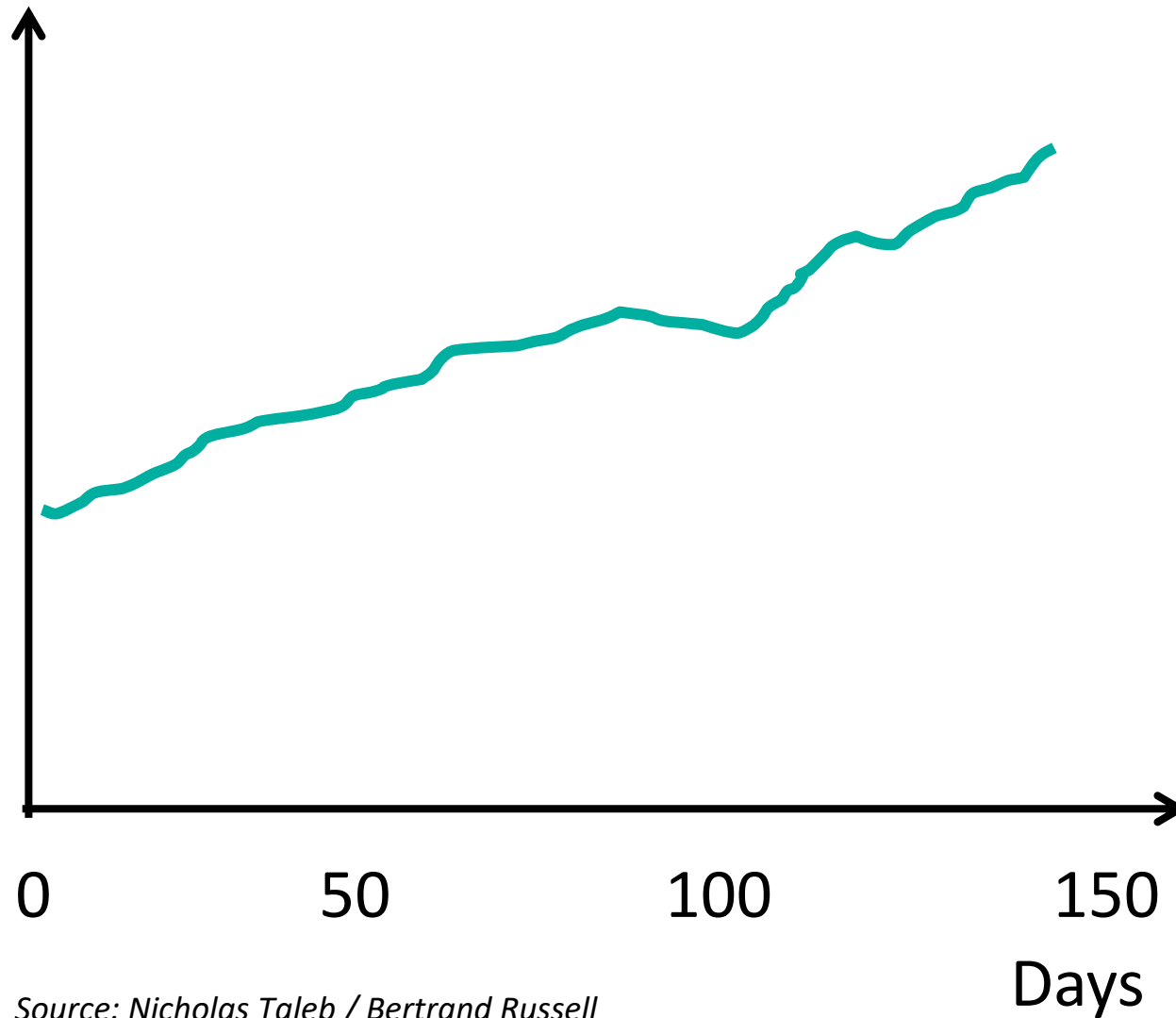
The
wellbeing
of a turkey



Source: Nicholas Taleb / Bertrand Russell

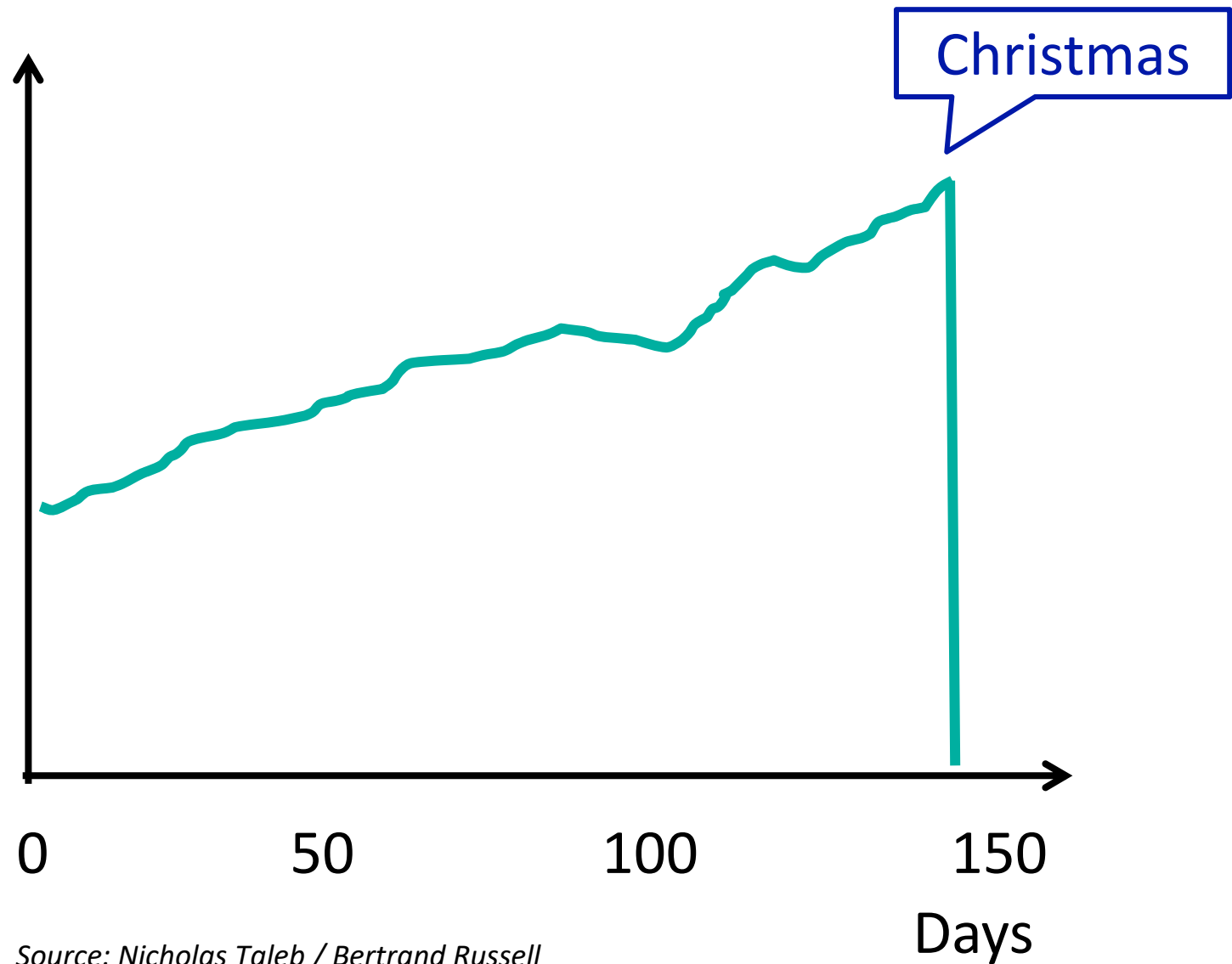


The
wellbeing
of a turkey



Source: Nicholas Taleb / Bertrand Russell

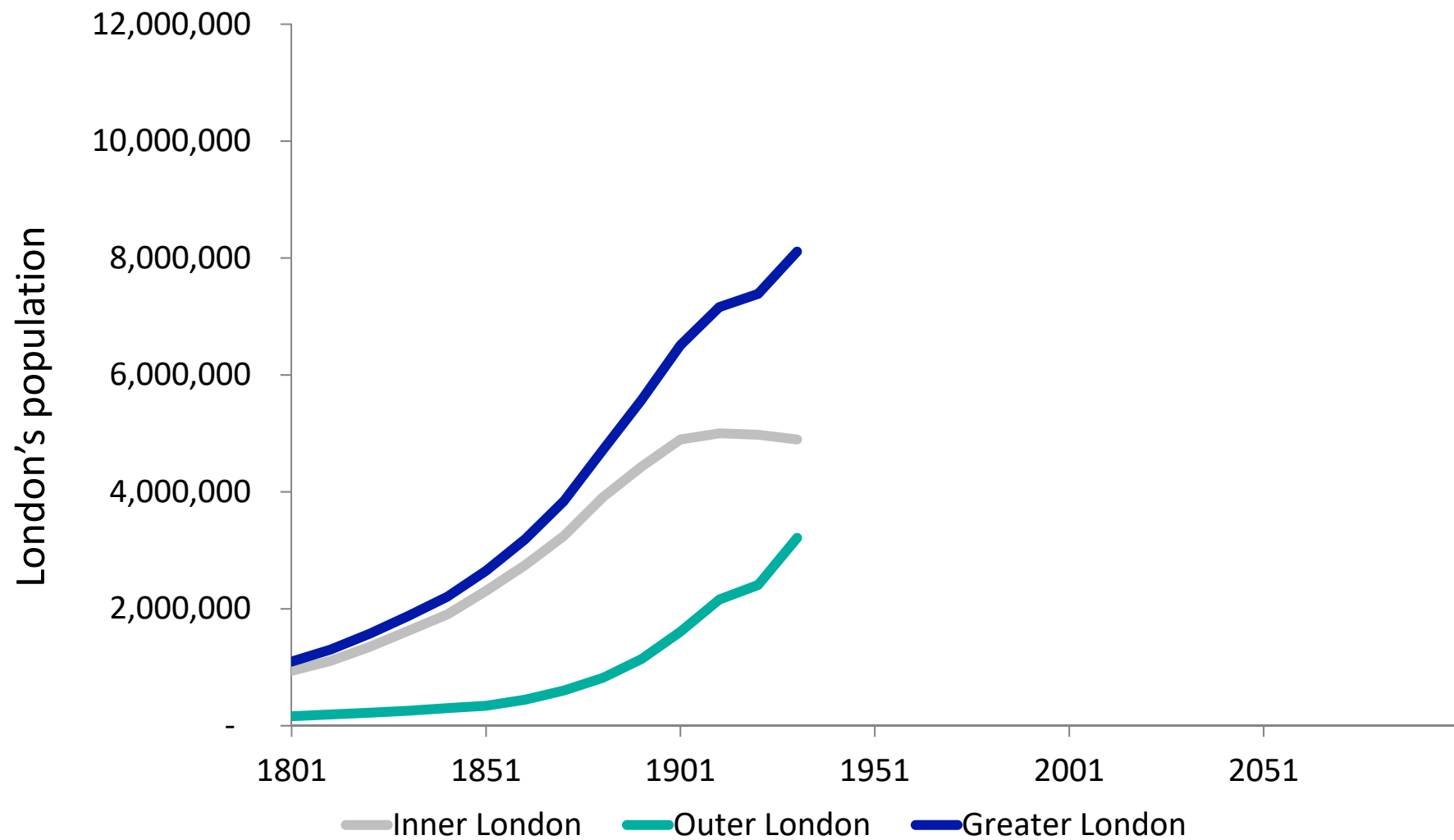
The
wellbeing
of a turkey

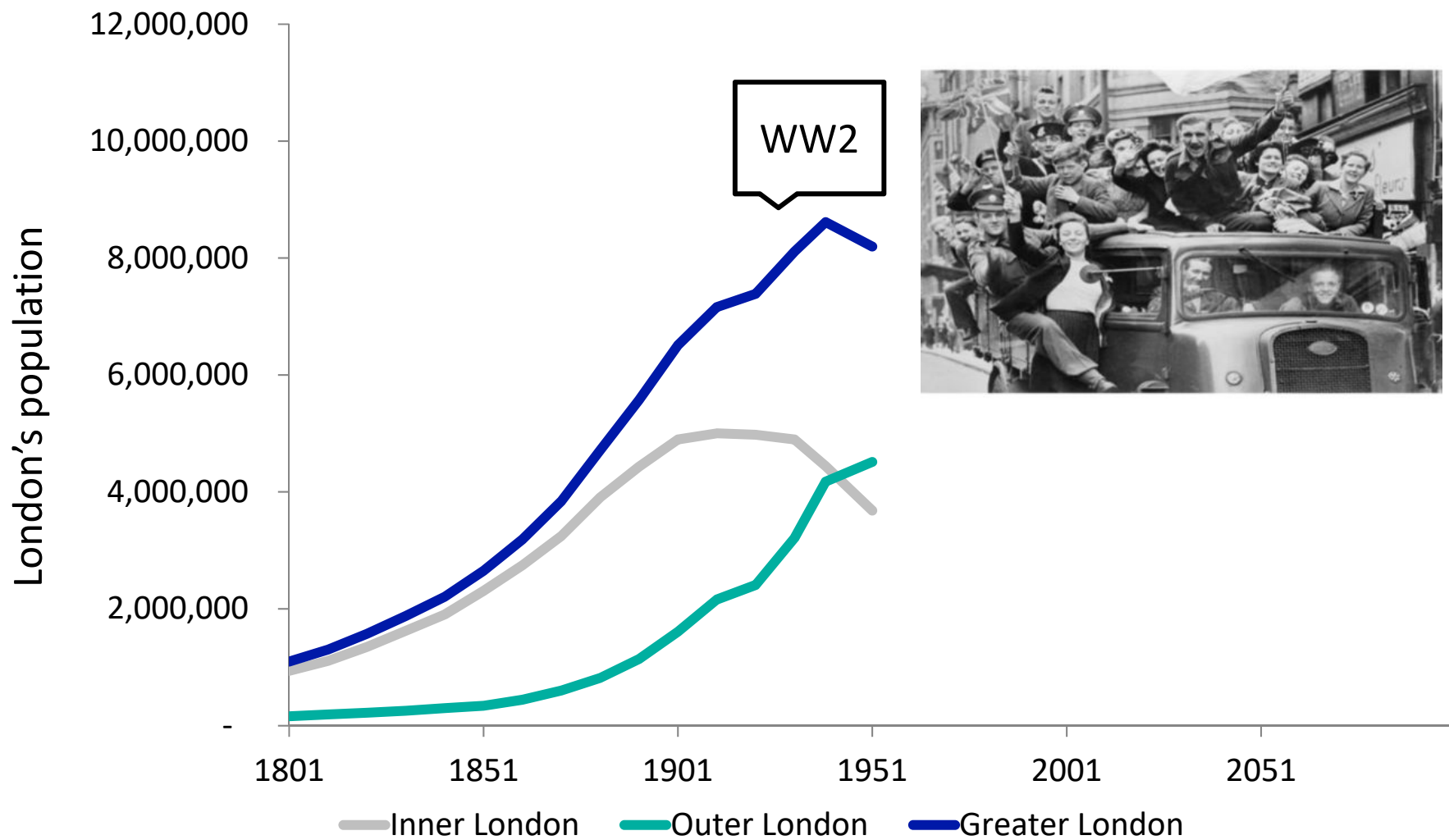


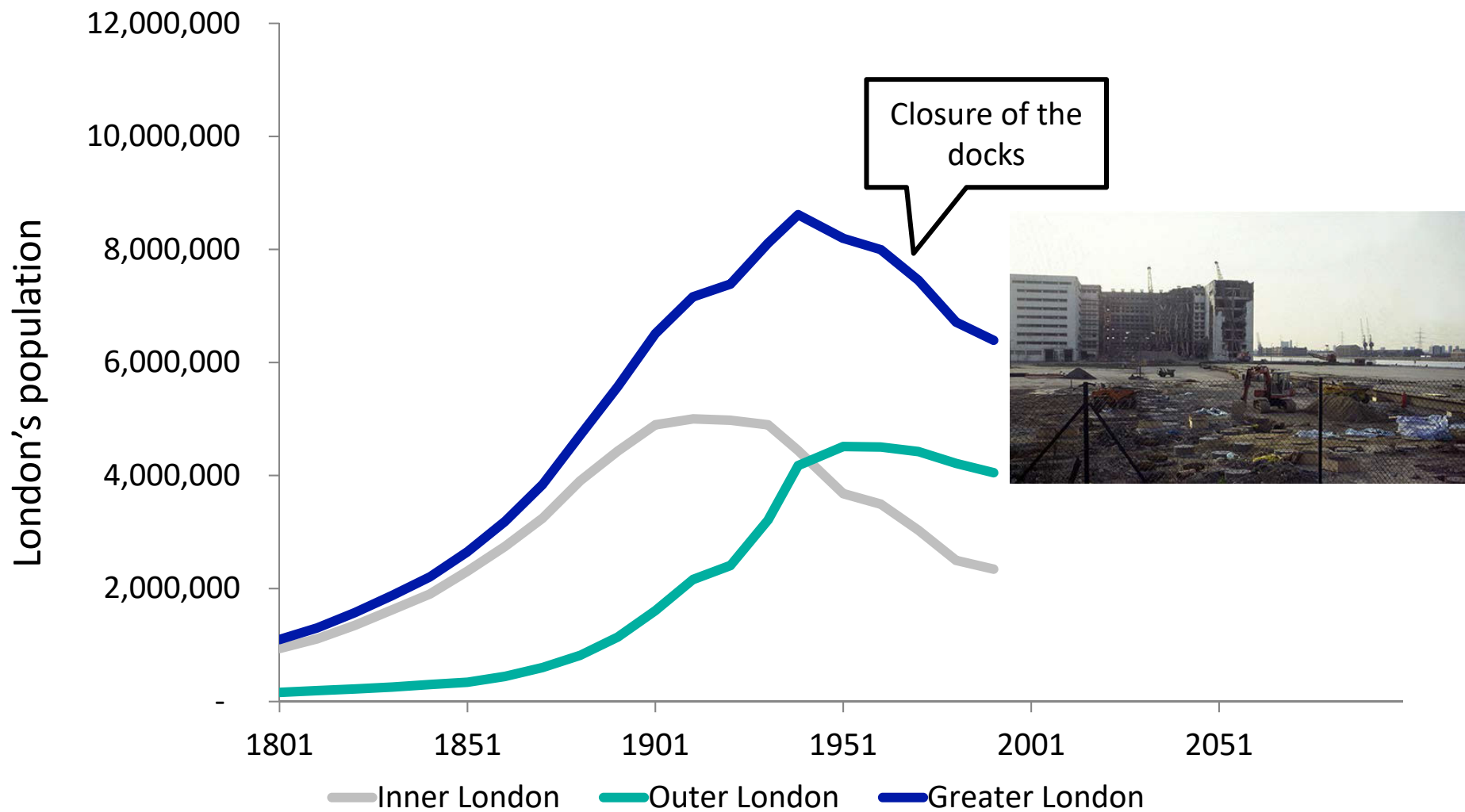
Source: Nicholas Taleb / Bertrand Russell

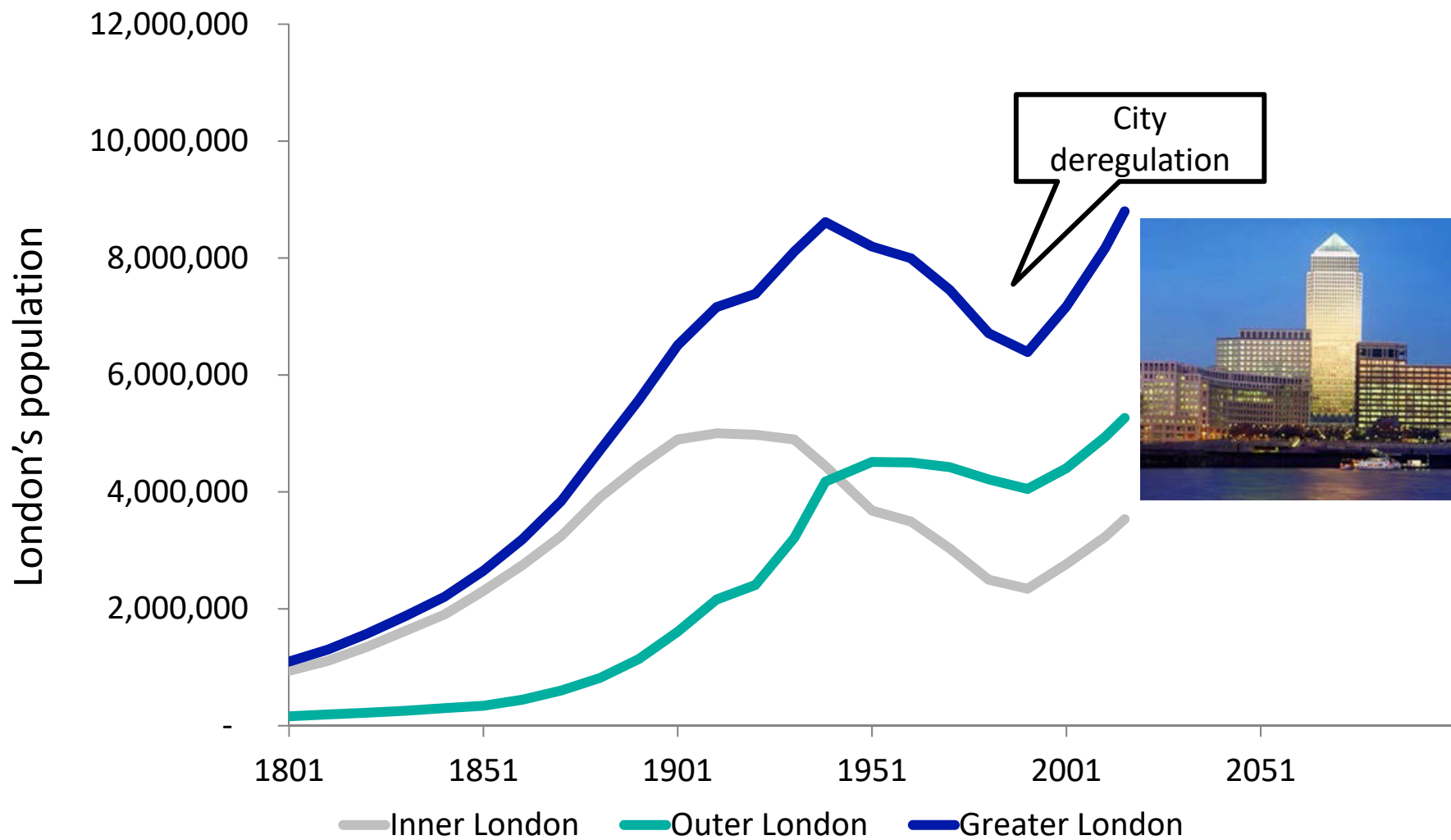


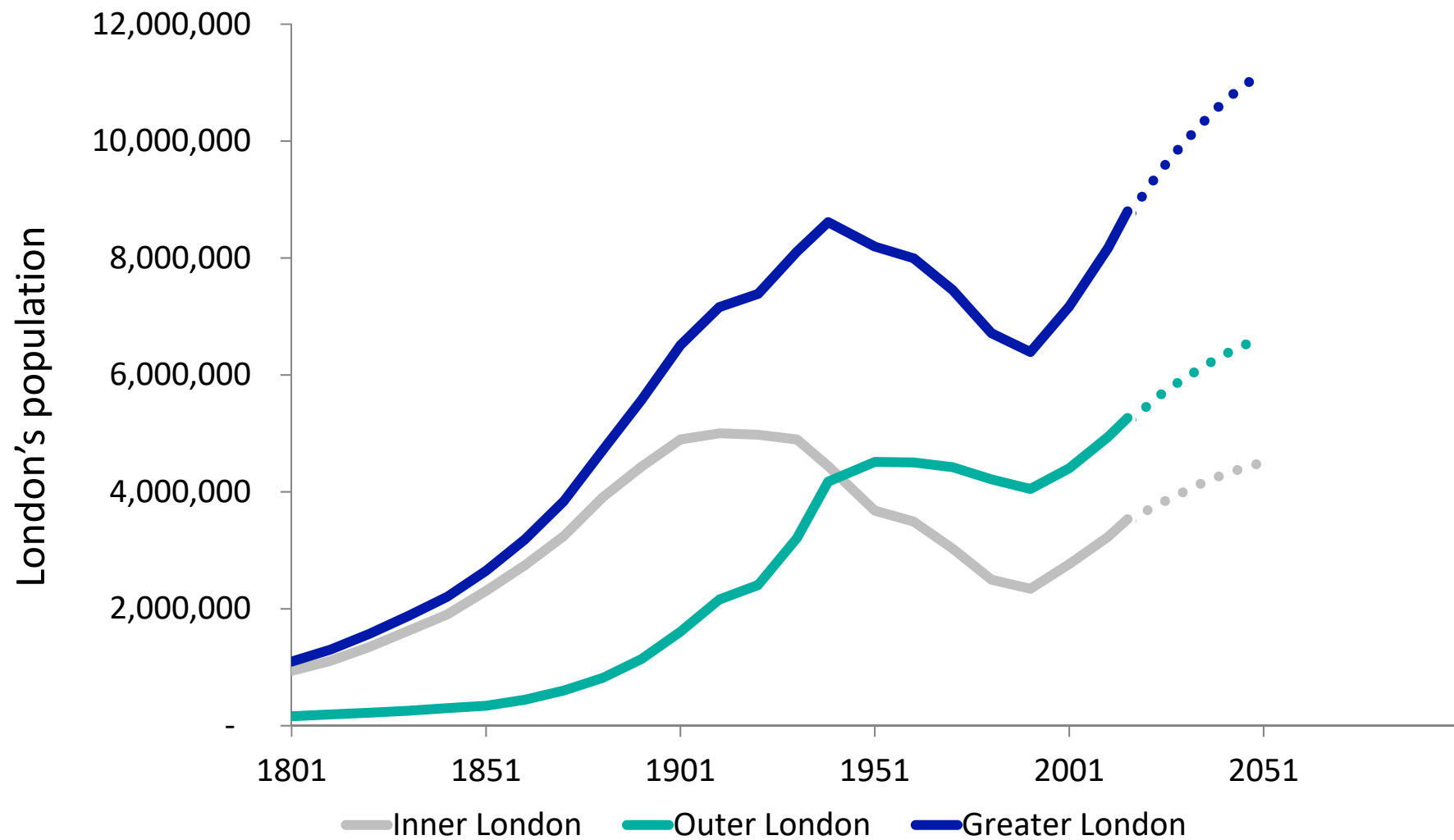
The past doesn't always
predict the future











There are signs of
change...









A 'perfect storm'



Economic
uncertainty



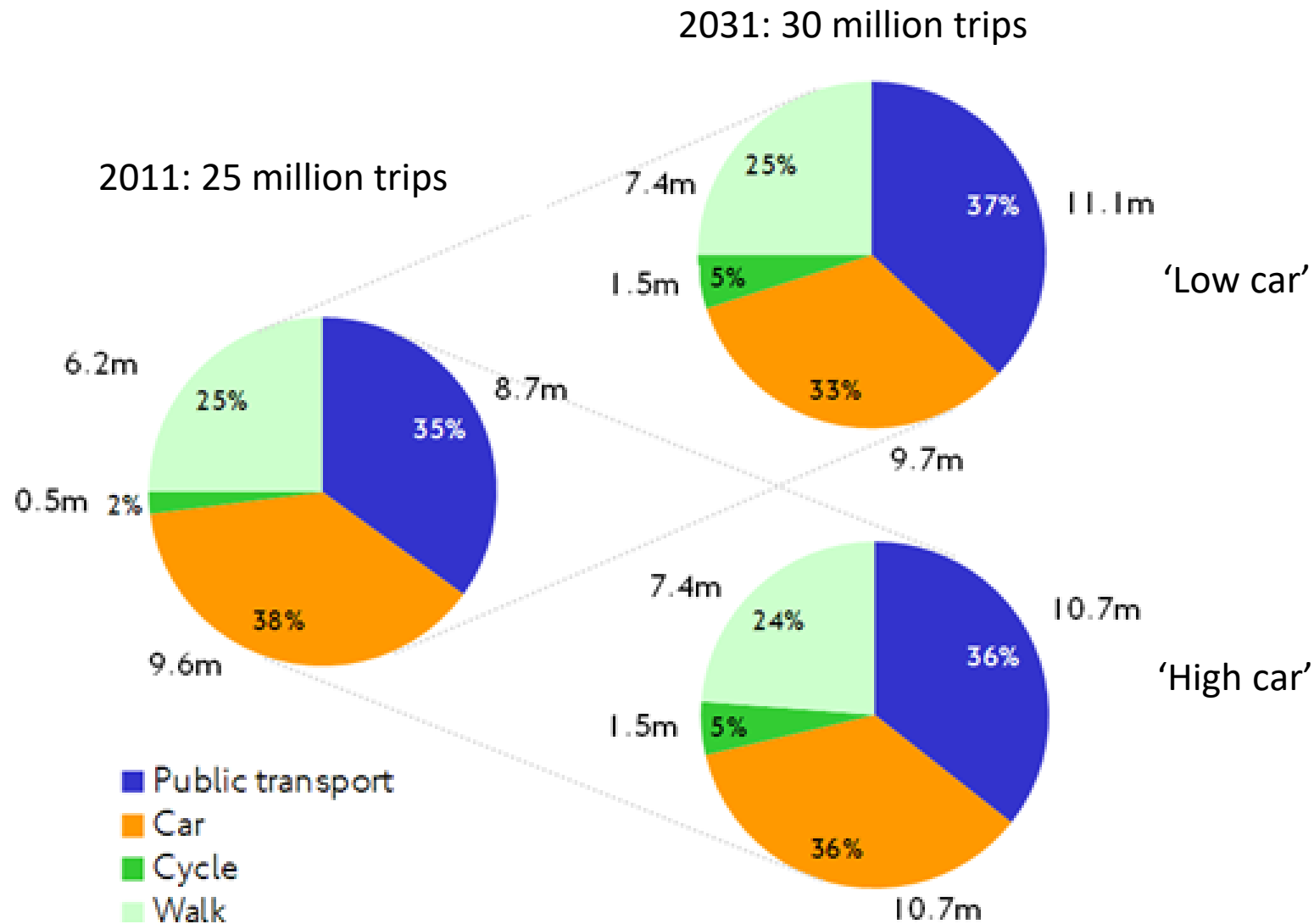
Travel behaviour
change



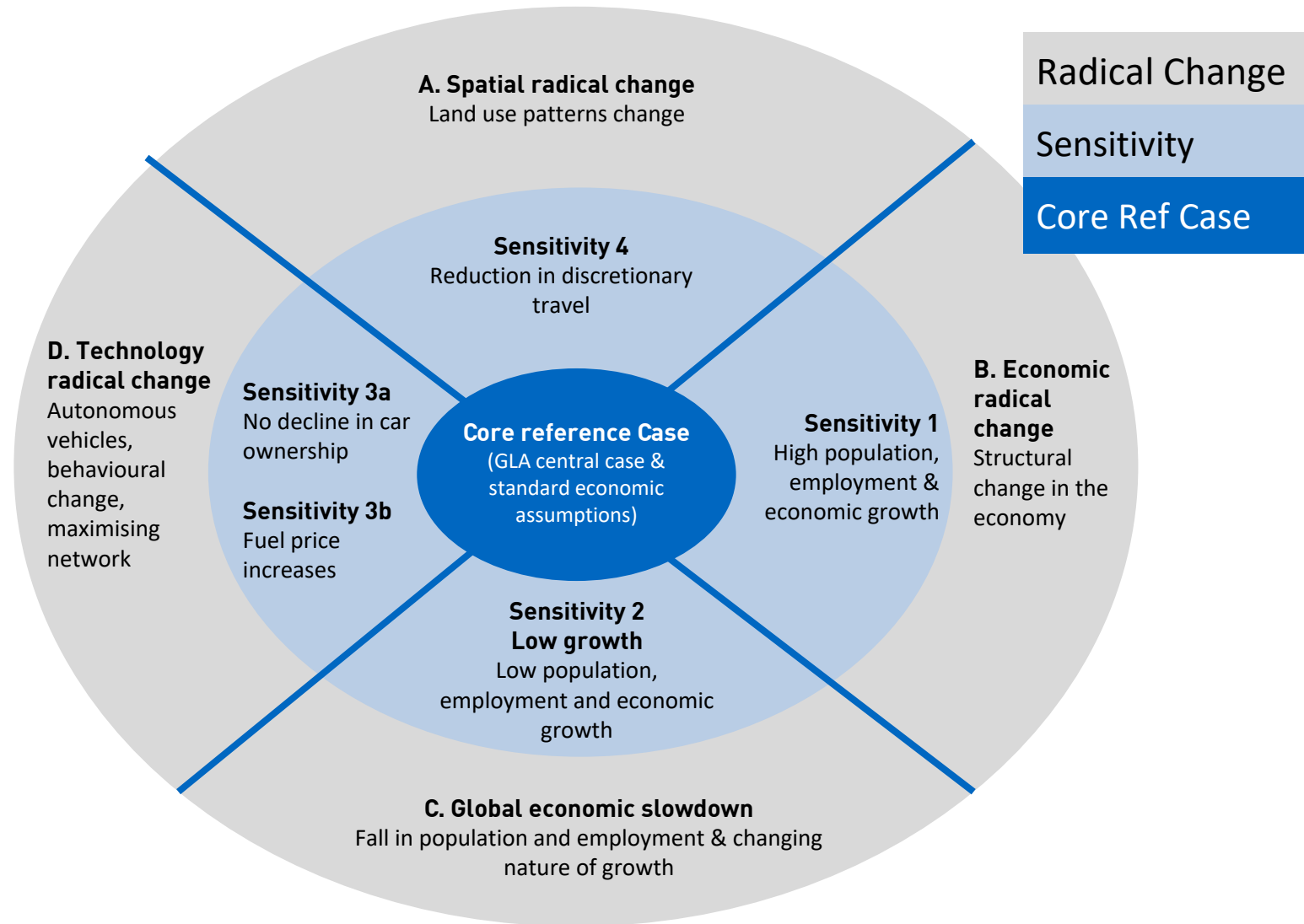
New business
models

In the past, we have
used sensitivity tests

'High car' and 'low car' scenarios



The 'wheel of uncertainty'

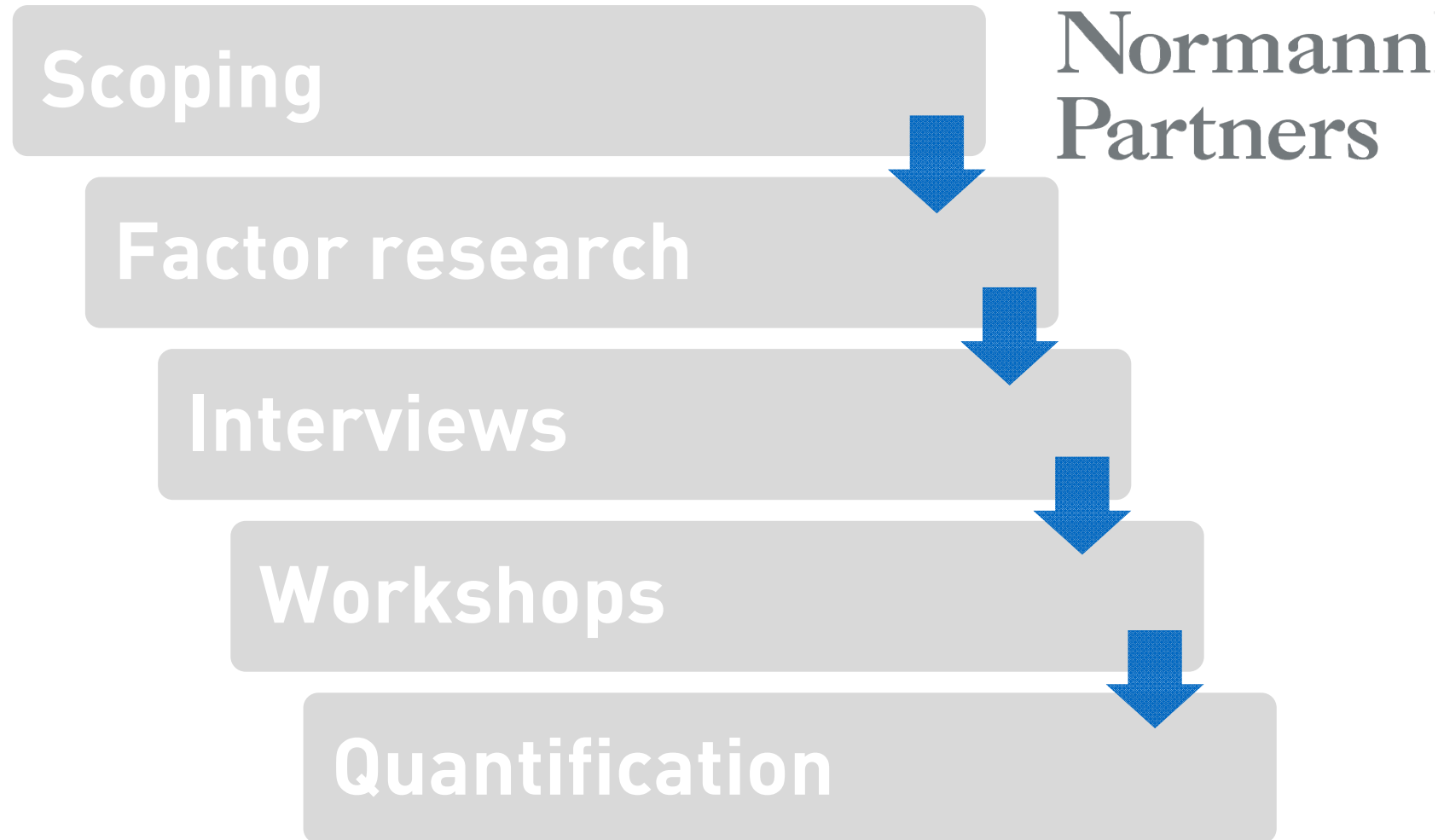


A Scenario Planning approach
takes into account multiple
intersecting uncertainties

Aim:

Challenge our assumptions
about the future and help us
to embrace uncertainty in our
plans

Scenario planning approach



Scenario planning approach

Scoping

Factor research

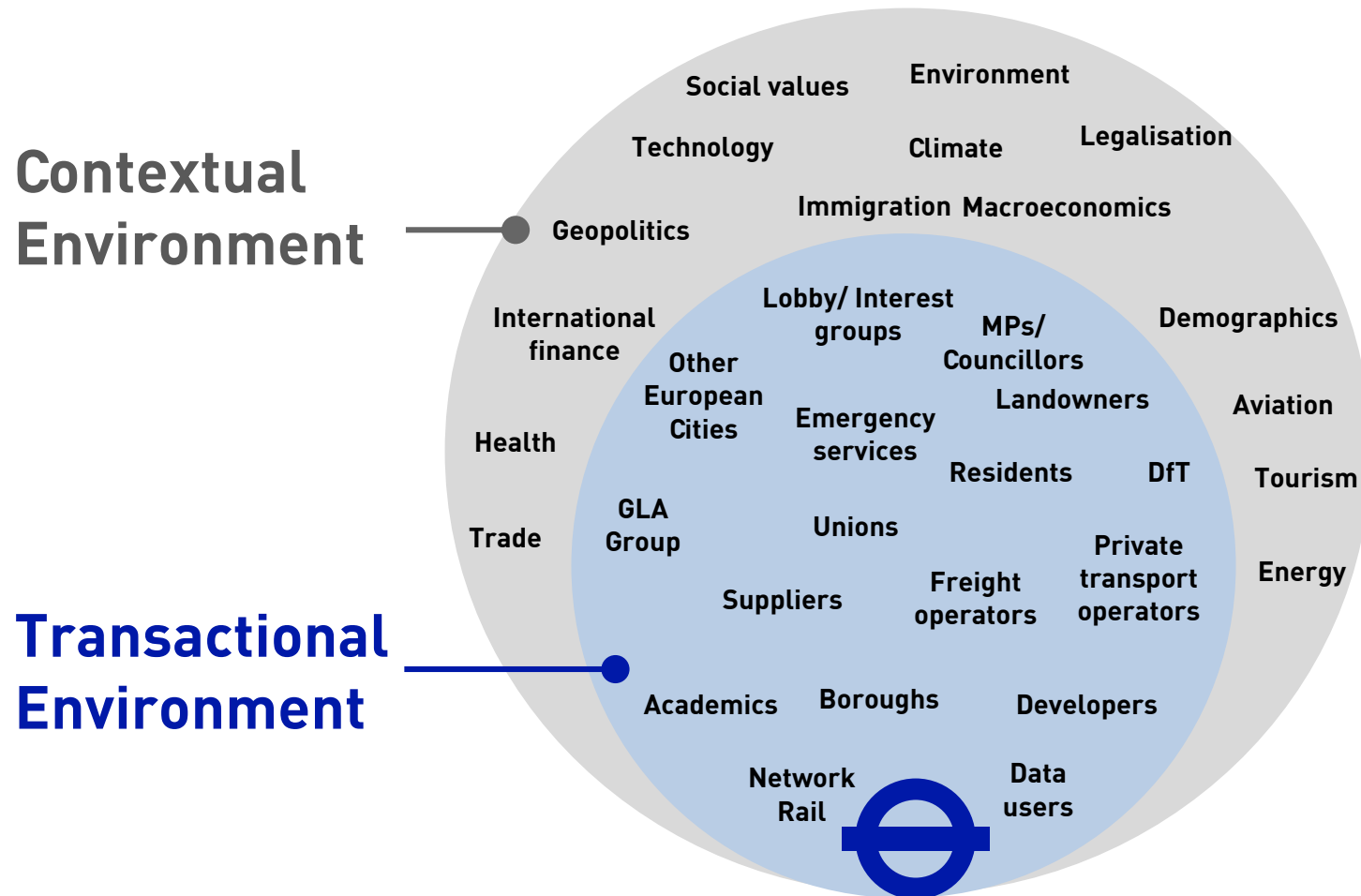
Interviews

Workshops

Quantification



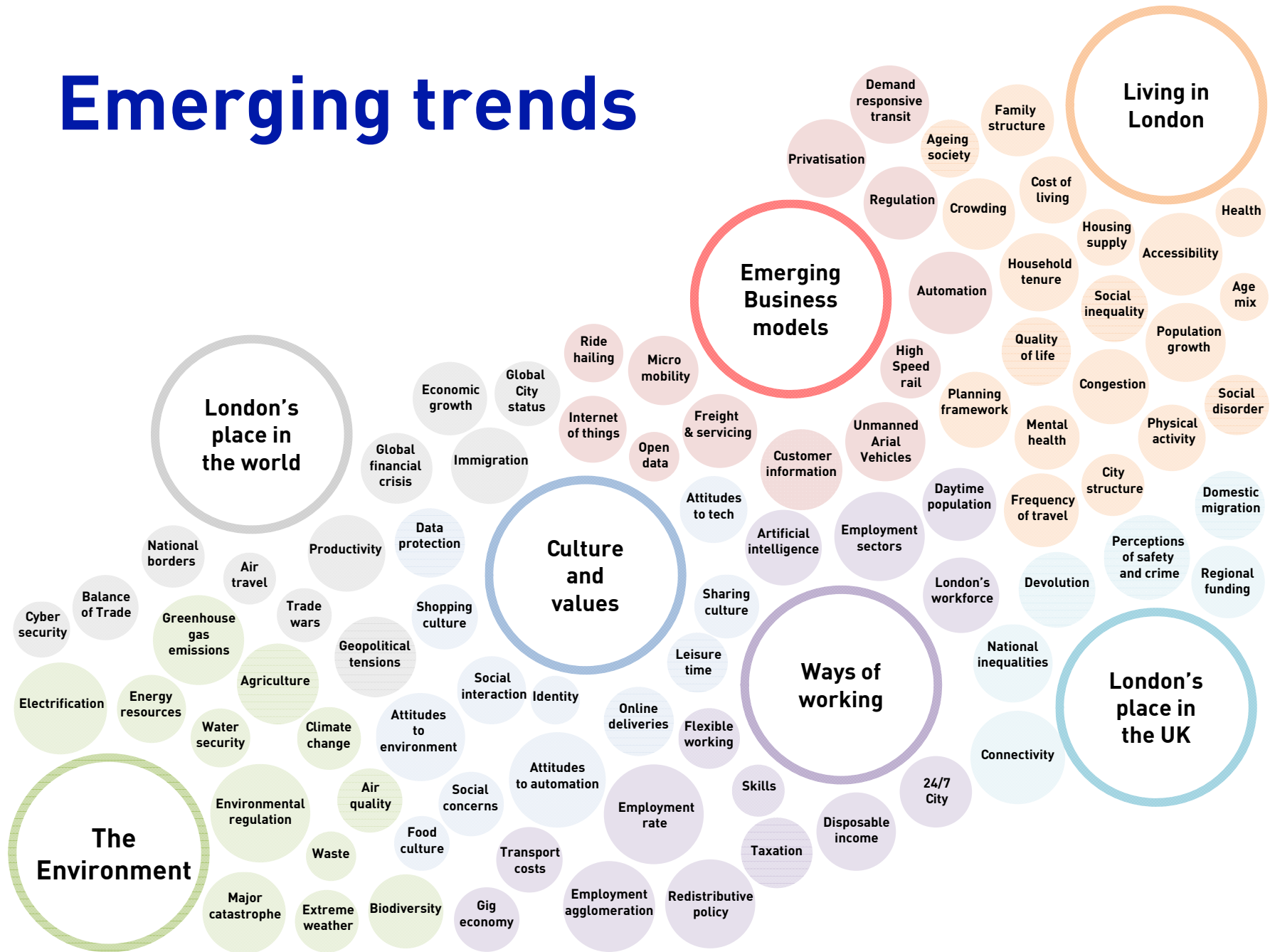
TfL's wider context



Scenario planning approach



Emerging trends



Scenario planning approach



Interviewing decision makers



Interviewing decision makers

“

'While public transport authorities have been somewhat stuck in their thinking, private operators have begun to fill in the gaps'

”

“

'Automation increases the utility of the city for its citizens because it's not so congested anymore. There's more space for business to be done and it's also a more pleasant space to be in'

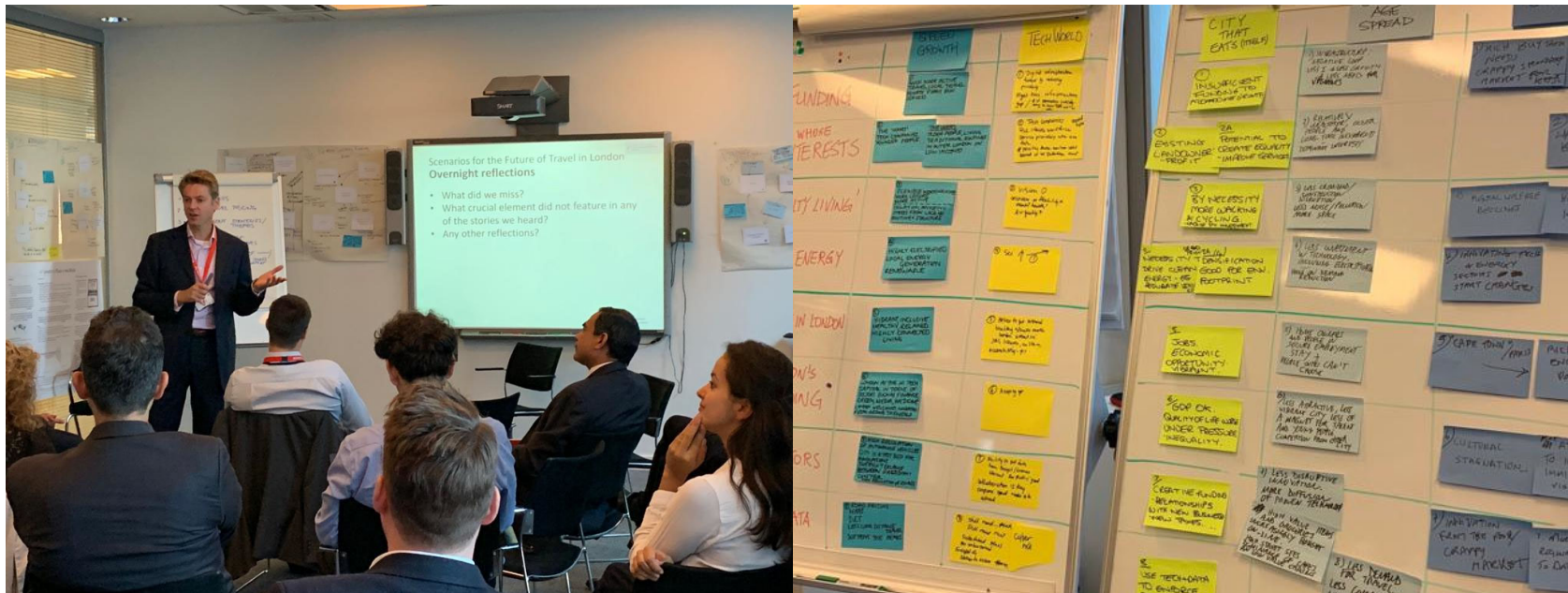
”



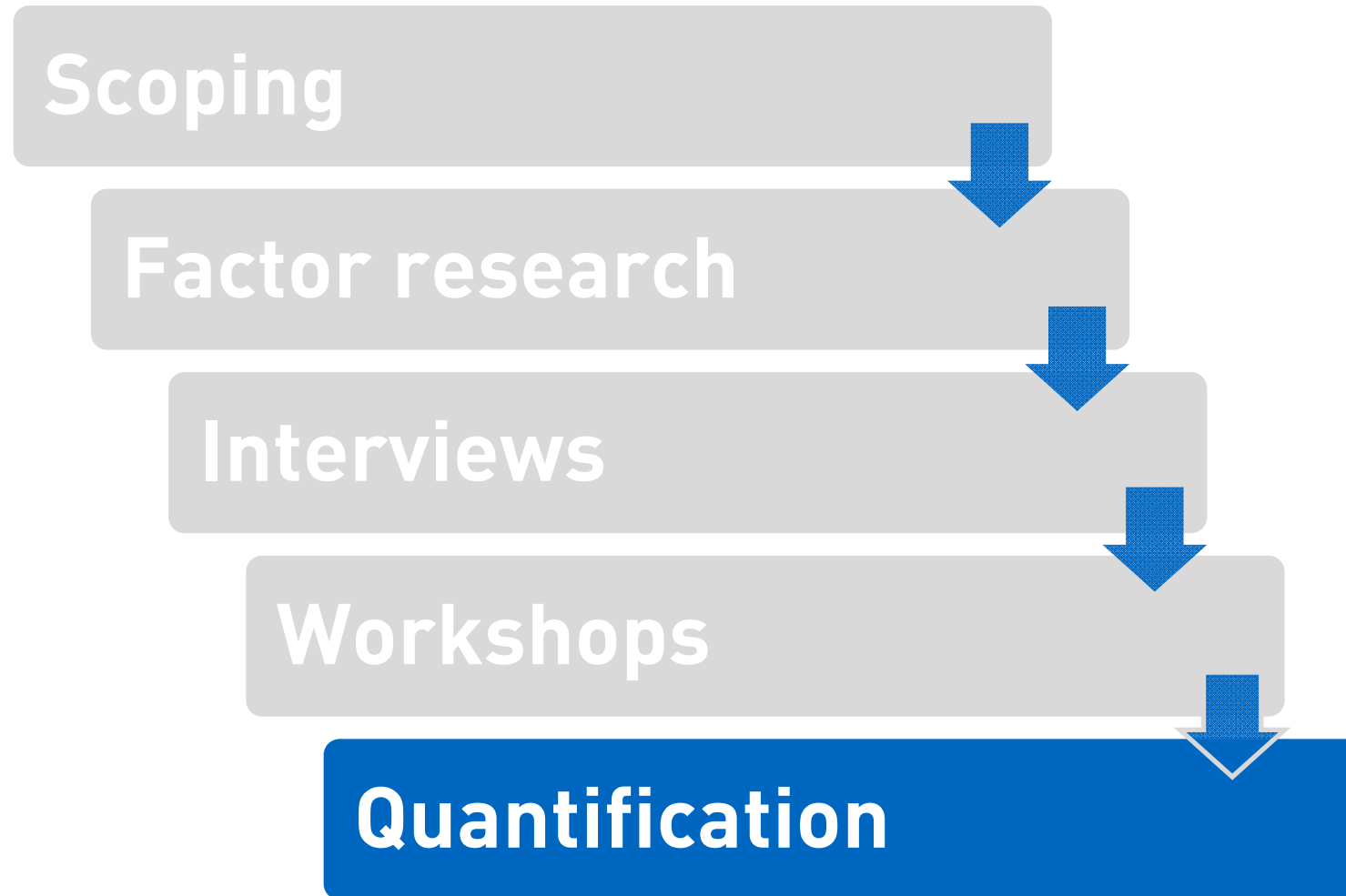
Scenario Planning approach



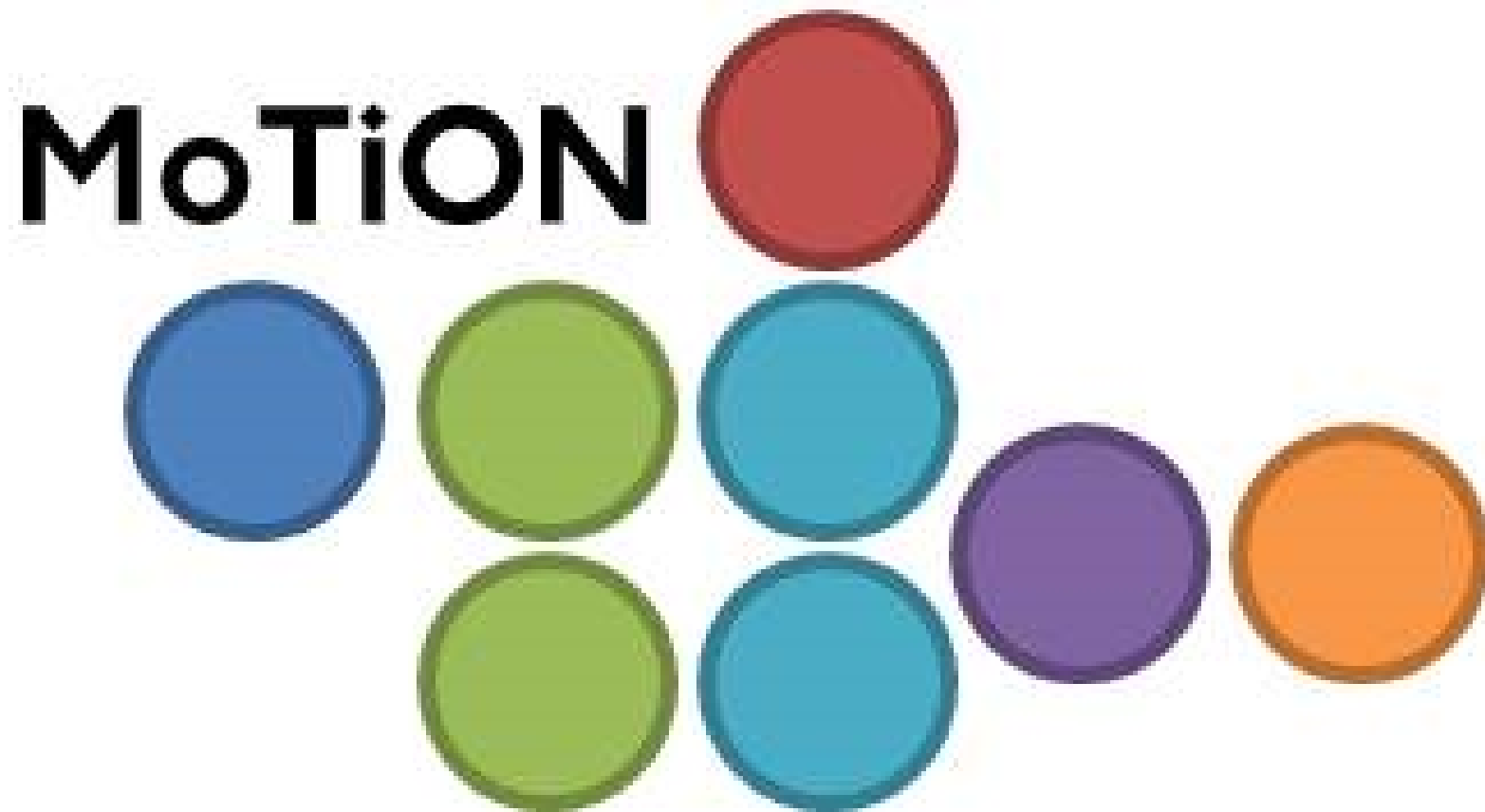
Workshops



Scenario Planning approach



New modelling approaches



Outcome:

3 stories about the future
of travel in London

3 Stories about the future

1



Innovating London:

The story of London re-inventing itself as a young, urban innovator, where technology changes how people live and work, but leaves some behind

2



Rebalancing London:

The story of a more equal but ageing society with lower economic growth, that focuses on self-sufficiency and liveability as world power moves East

3



Accelerating London:

The story of an ever-growing, expanding London which acts as the beating heart of the world financial system, but struggles to deliver high quality of life for all



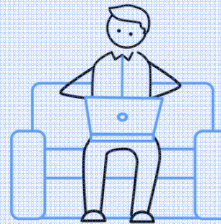
Each scenario has distinct
implications for travel in
London

Travel Implications

Innovating London



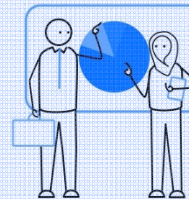
Existing public and private transport is challenged by new modes



Technology reduces need to travel for some



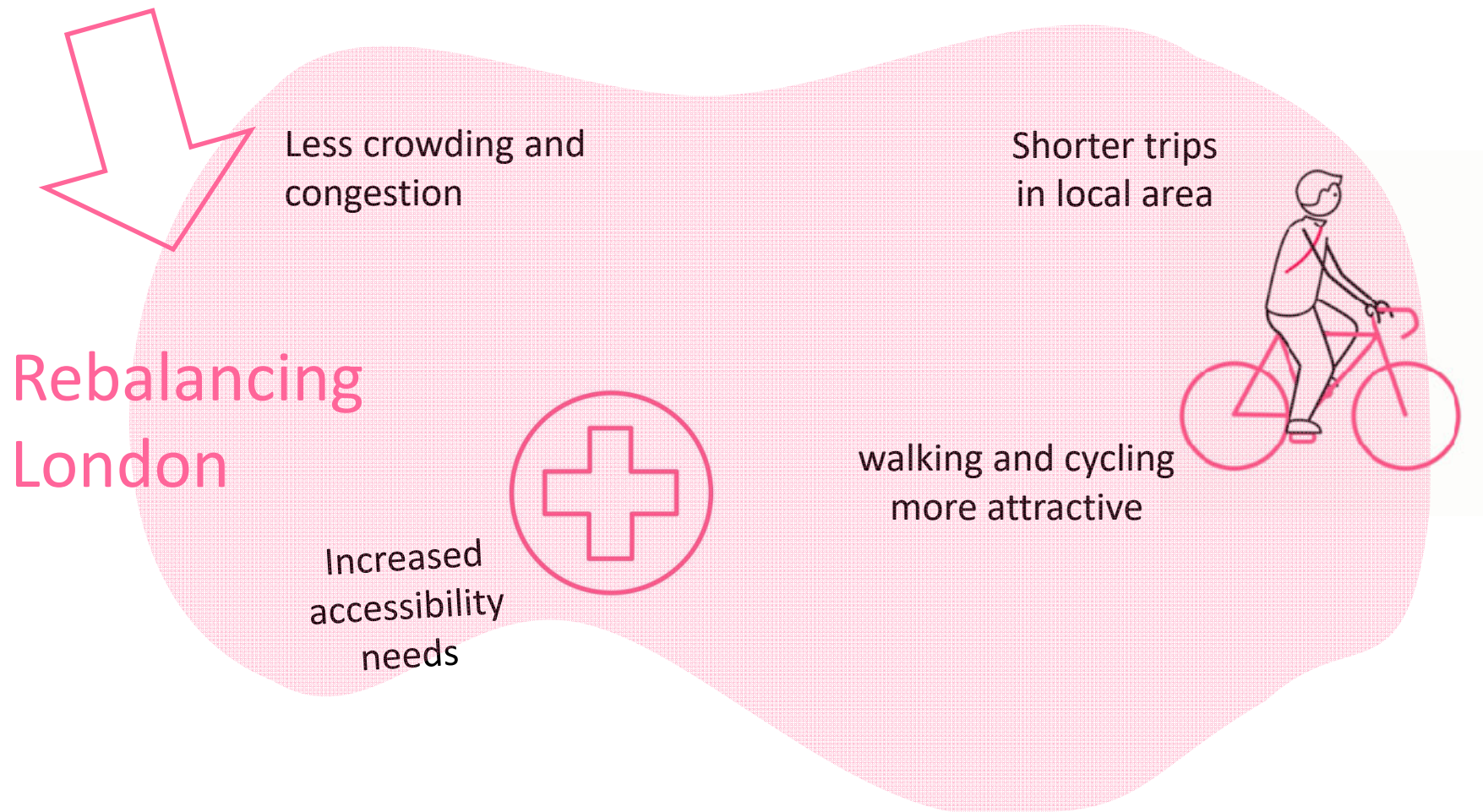
People make more off-peak trips



More 'public transport' is privately run.

Local hubs provide potential for active travel

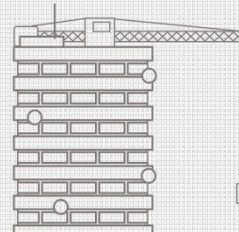
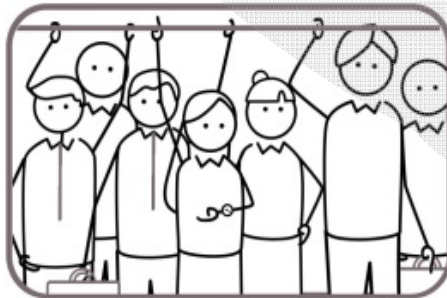
Travel Implications



Travel Implications

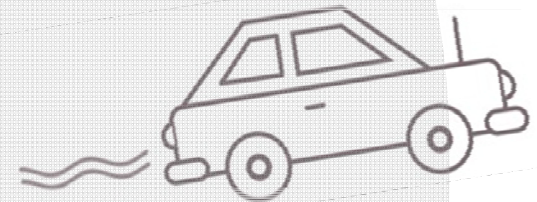
Accelerating London

More travel than
we are planning
for



High density living
increases potential for
public transport

Housing built in areas of
poor accessibility
encourages car use



The environment
is less pleasant to
walk and cycle in

Our plans must be robust
to a range of different
futures

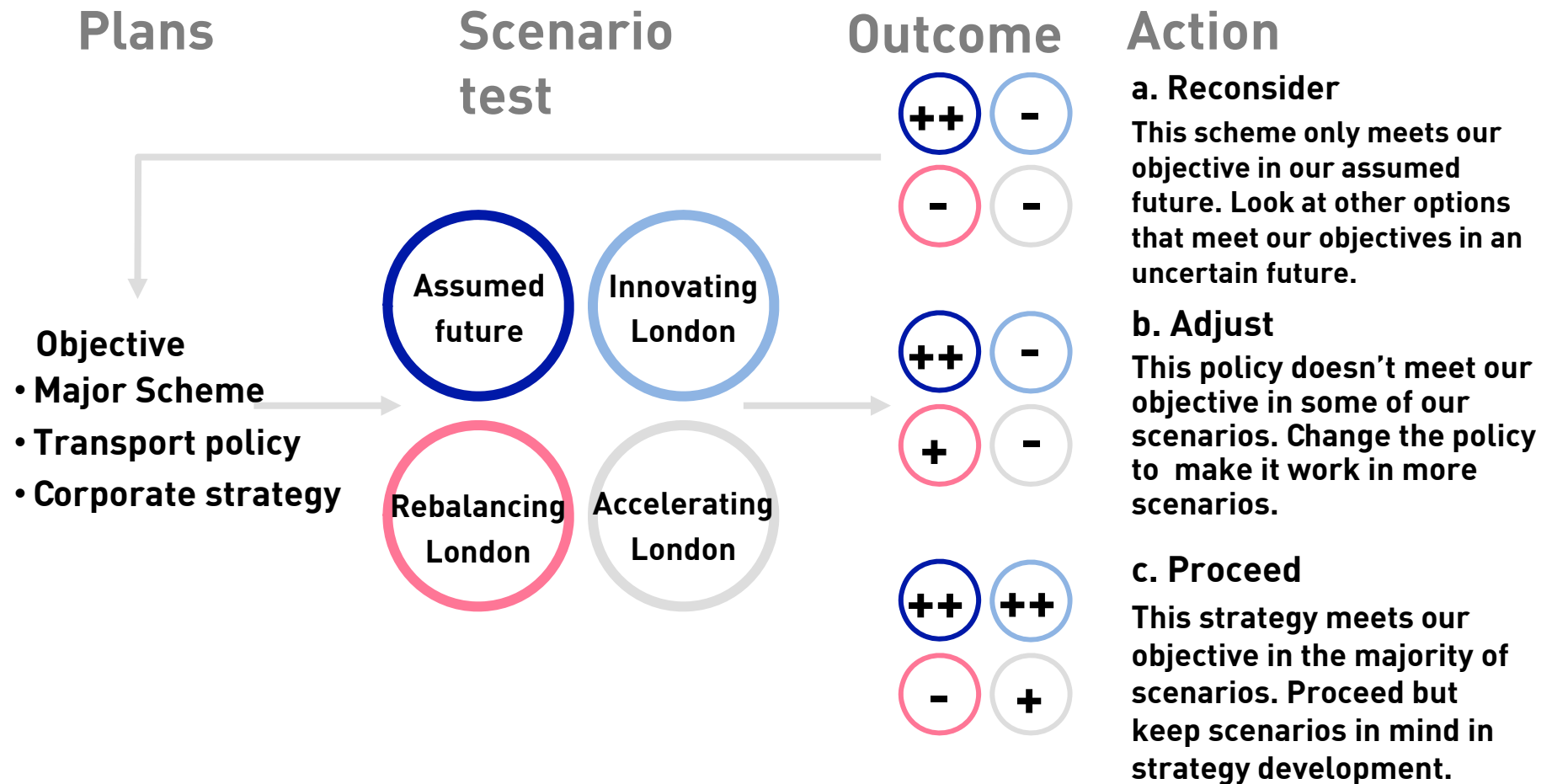
Using the scenarios

Major infrastructure projects

Corporate strategy

Mayor's Transport Strategy policies

Using the scenarios



Contact

Simon Nielsen

SimonNielsen@tfl.gov.uk



EVERY JOURNEY MATTERS