



Inclusive mobility for an ageing society:

“Bike-friendly city for the elderly”

City of Amsterdam



What would you like to know about this topic?





1. Welcome to Amsterdam!
2. The elderly: stats and challenges
3. Measures for a bike-friendly city for the elderly





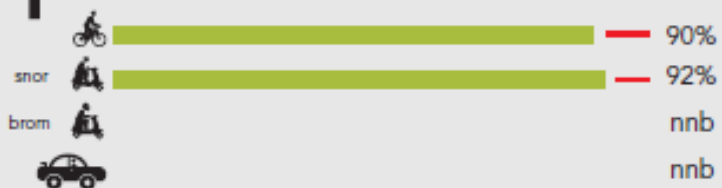




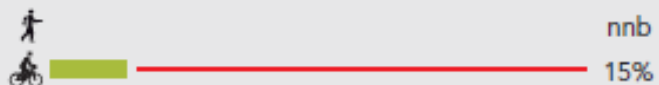




% Road users that give priority properly



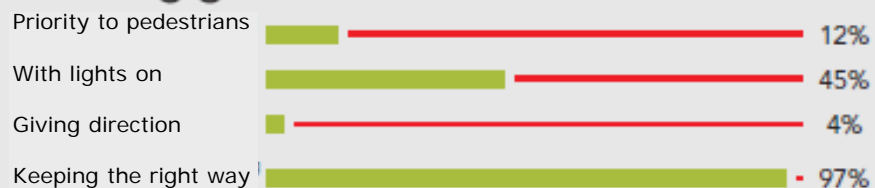
% Road users that look left-right-left before crossing



% Road users that aren't distracted by their smartphone



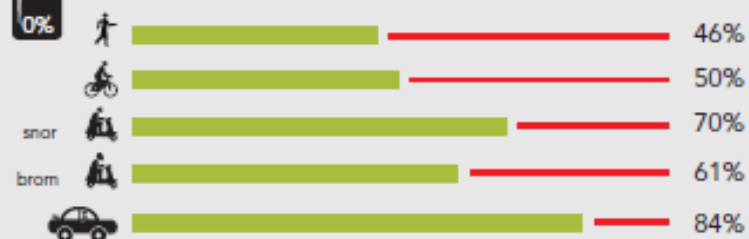
Cyclists extra:



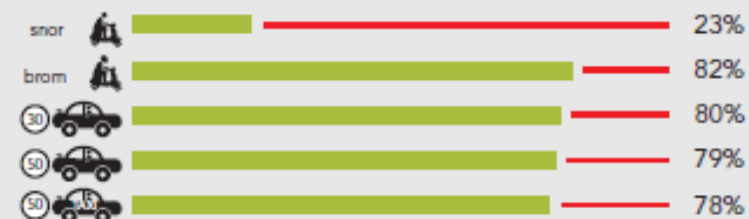
Safety Performance Index (SPI)



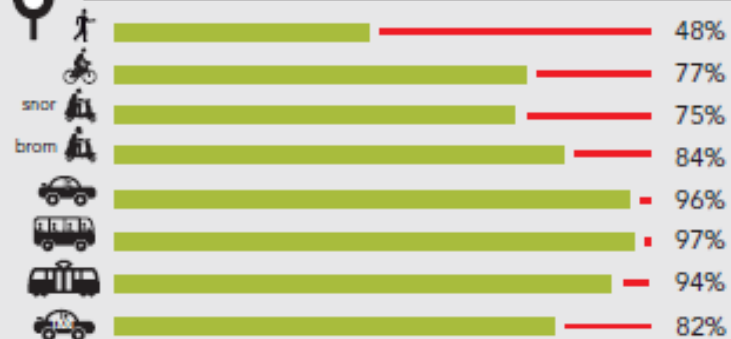
% Road users that always stayed completely sober during 2015



% Road users that keep to the maximum speed limit



% Road users that wait for the green light









Max. speed: 50km/h



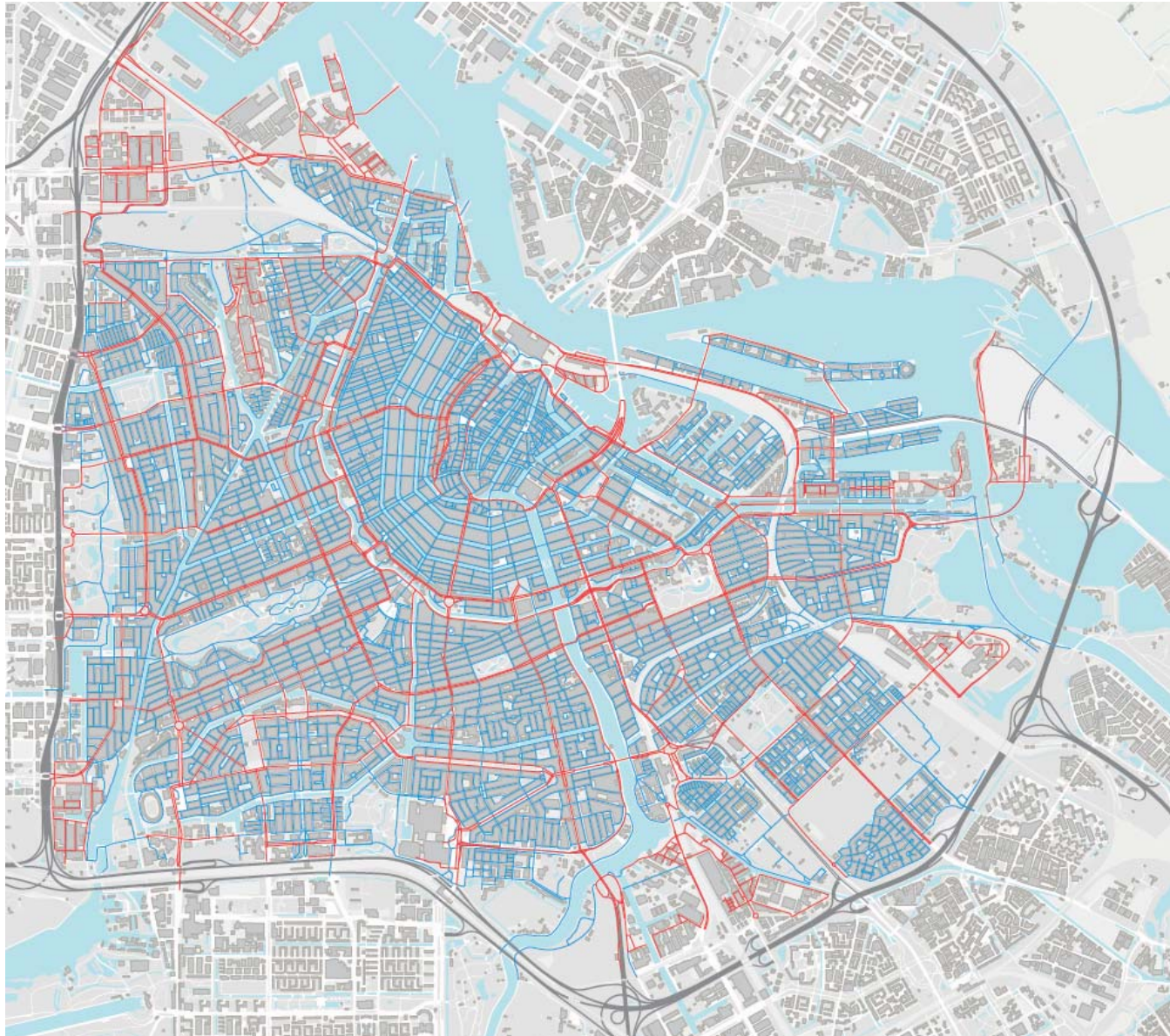


Max. speed: 30km/h



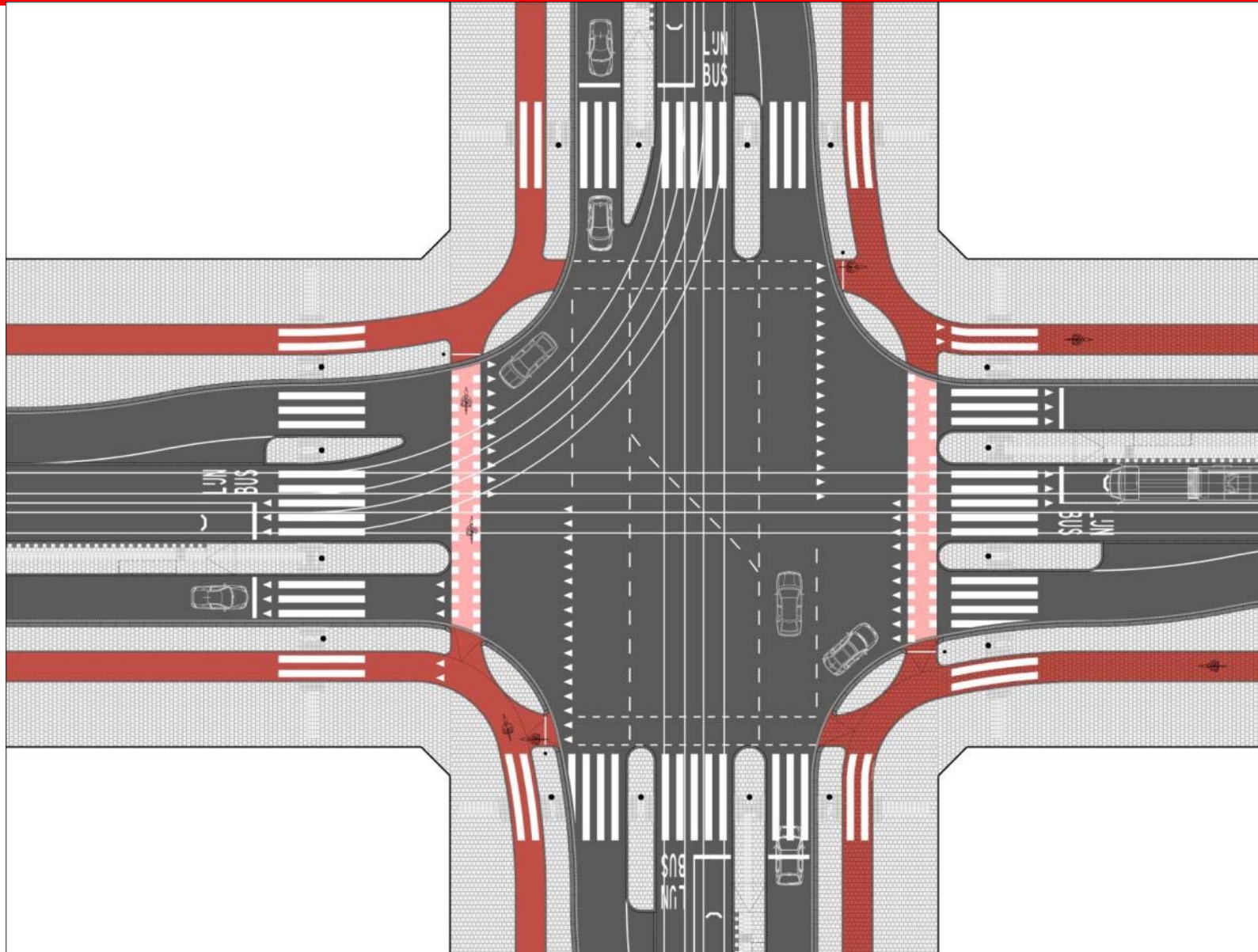


Speed profiles: 30 and 50km/h





50km/h road profile





Cuypers-passage CS





Nescio bridge



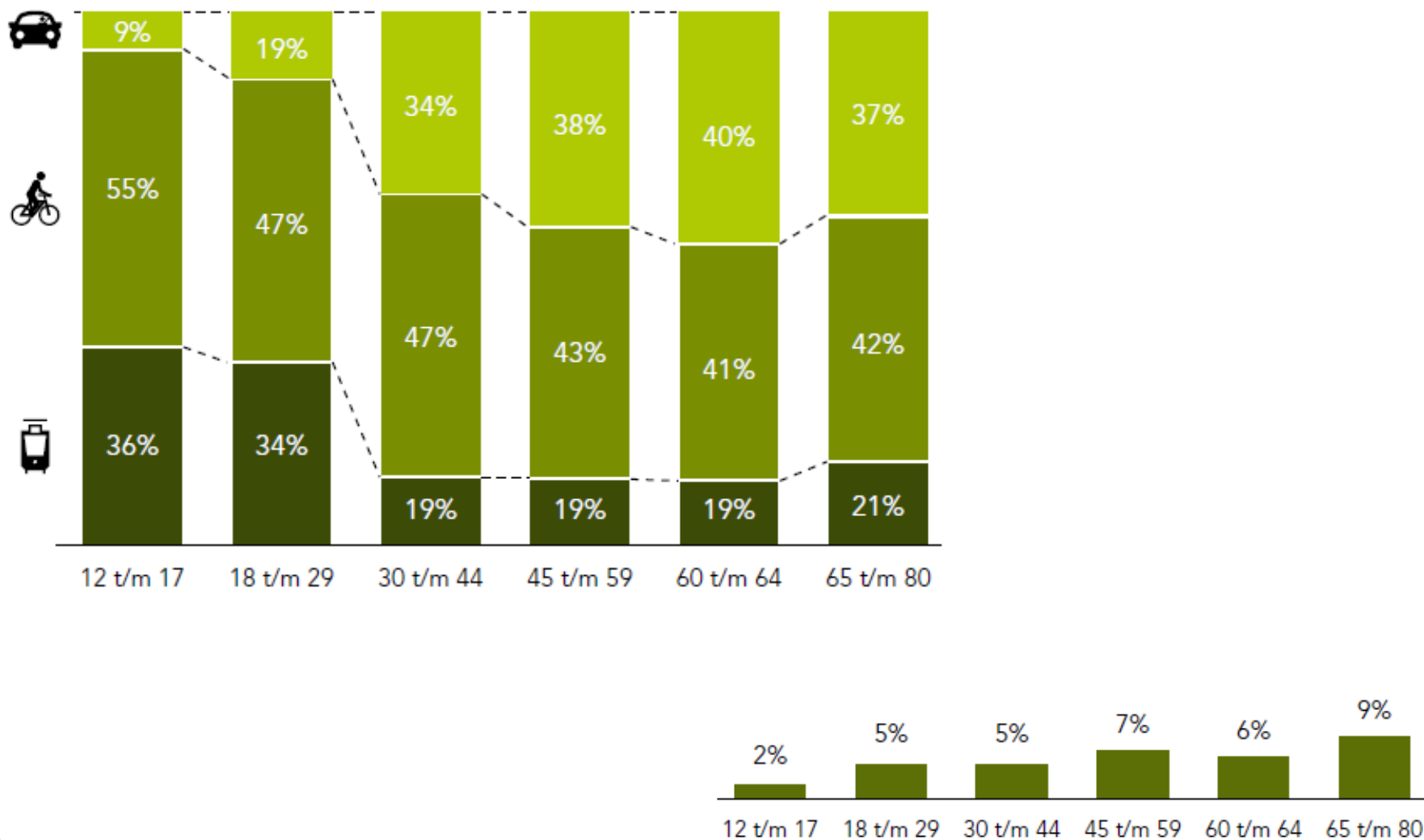


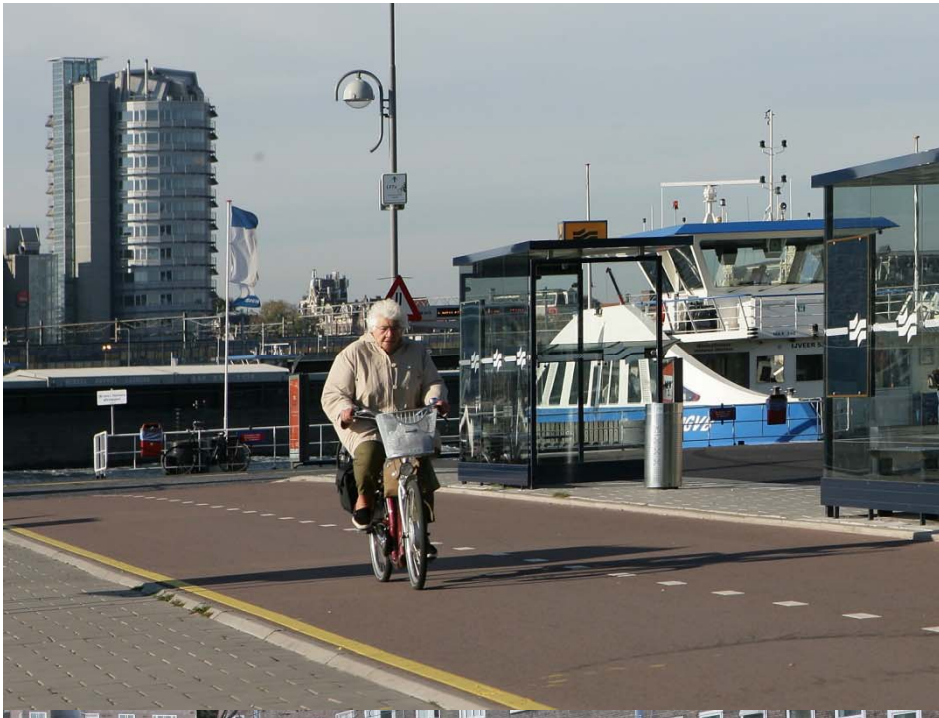
Rijksmuseum-passage





Modal split Amsterdam

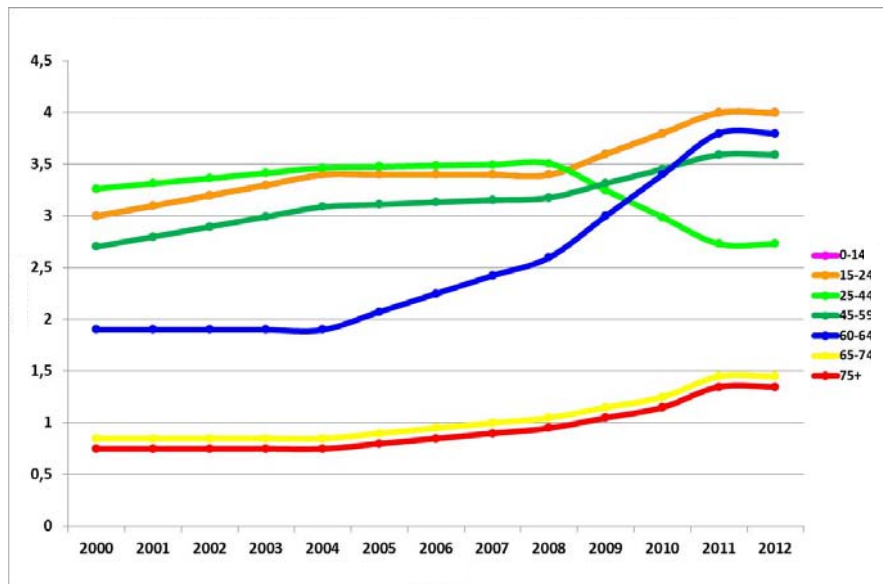




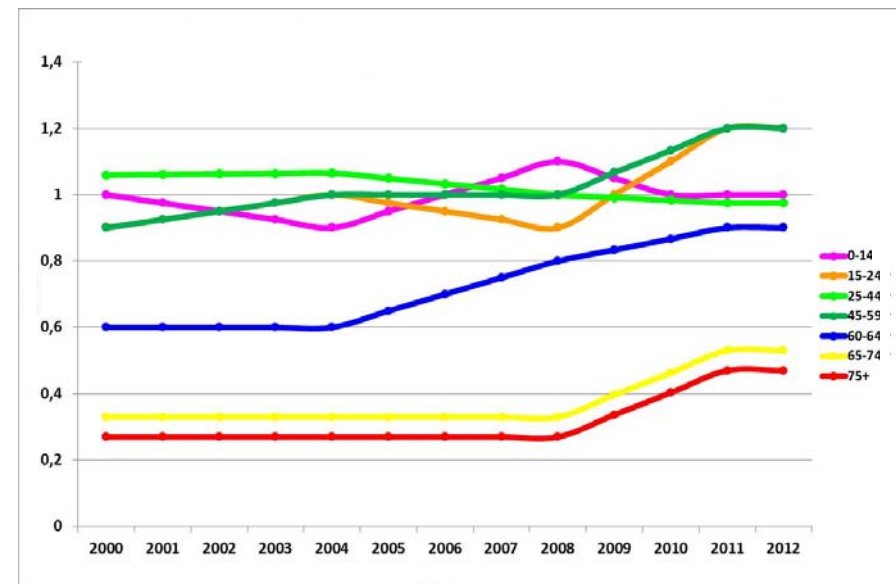




Bicycle use



Daily average: km p.p. by bike



Daily average: trips p.p. by bike



+/- 20.000 e-bikes in Amsterdam



>43% = 65+

>80% = 50+

1 out 5 new bikes

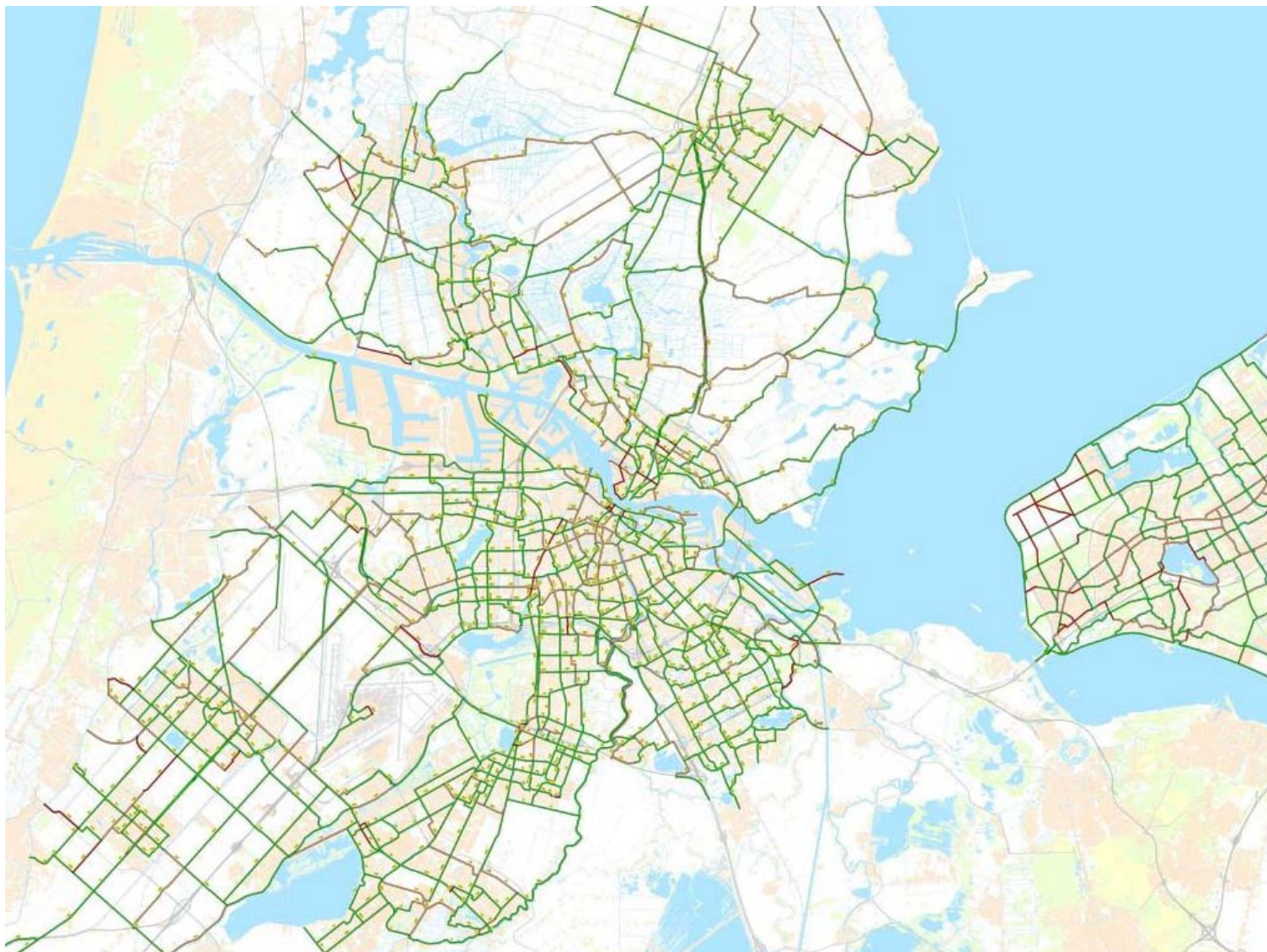


Recreational cycle routes





Map regional cycle routes



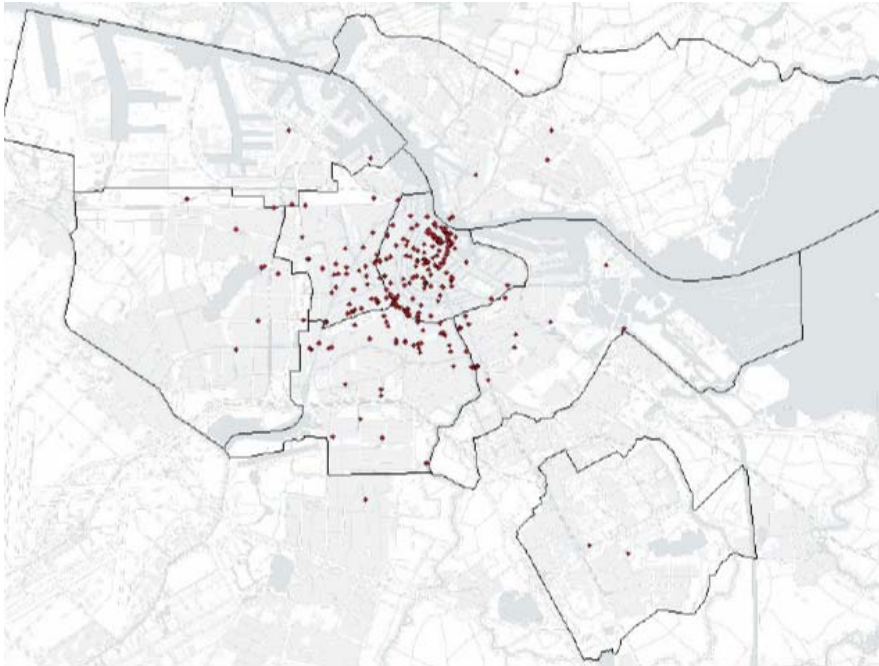


Subjective road safety: marks

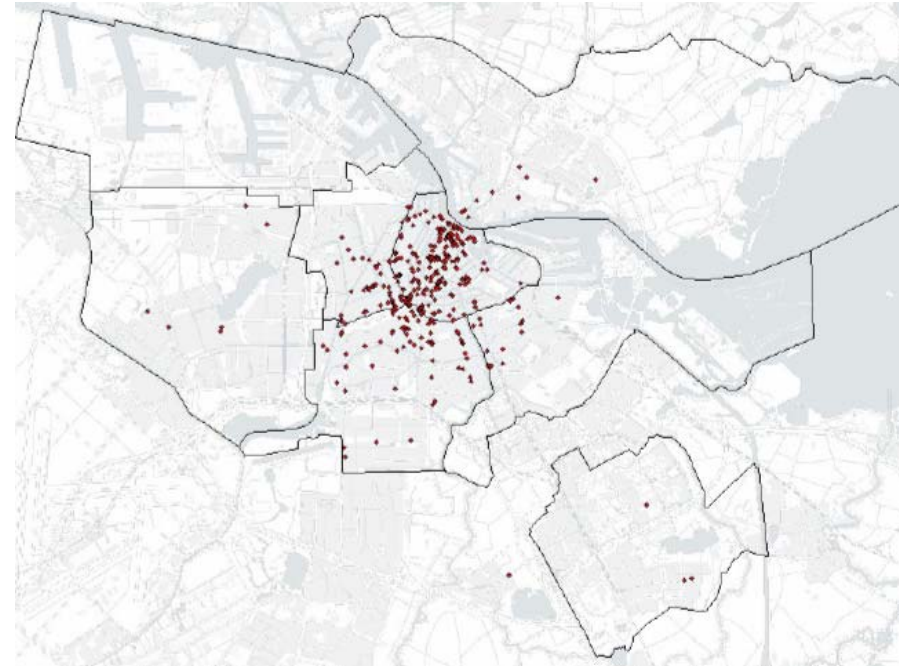
Group	Mark (0-10)
Cyclist <15 years	5,4
Cyclist 15-24 years	6,7
Cyclist 25-44 years	6,4
Cyclist 45-59 years	6,1
Cyclist 60-64 years	6,1
Cyclist 65-74 years	6,1
Cyclist >74 years	6,2
Cyclist (all ages)	6,1
Moped (25km/h, no helmed, on cycle lane)	6,3
Moped (45km/h, helmed, on drivers lane)	6,4
Motorcycle	6,9
Pedestrian	6,9



Subjective road safety: most unsafe spots



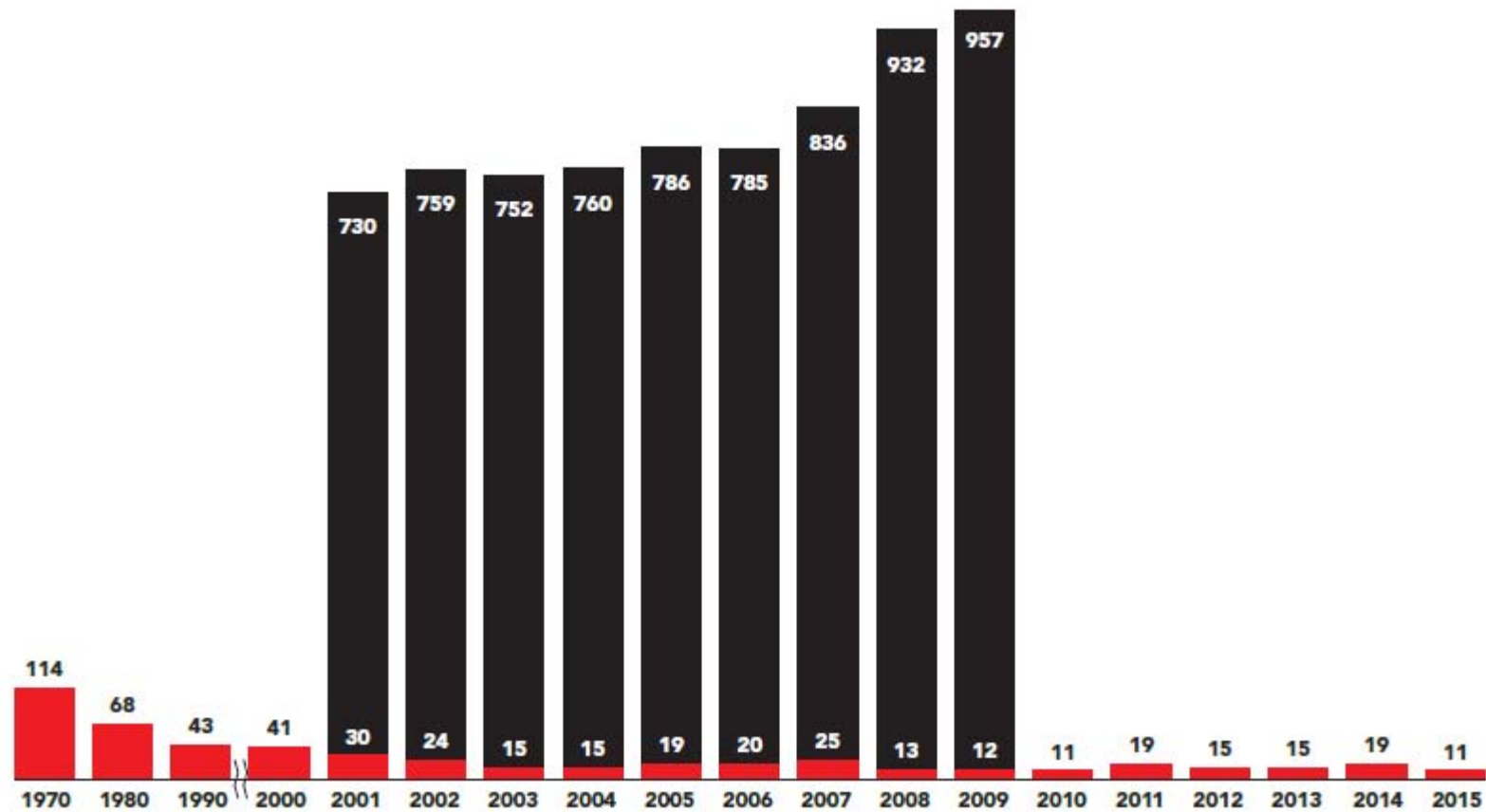
60-64



65+

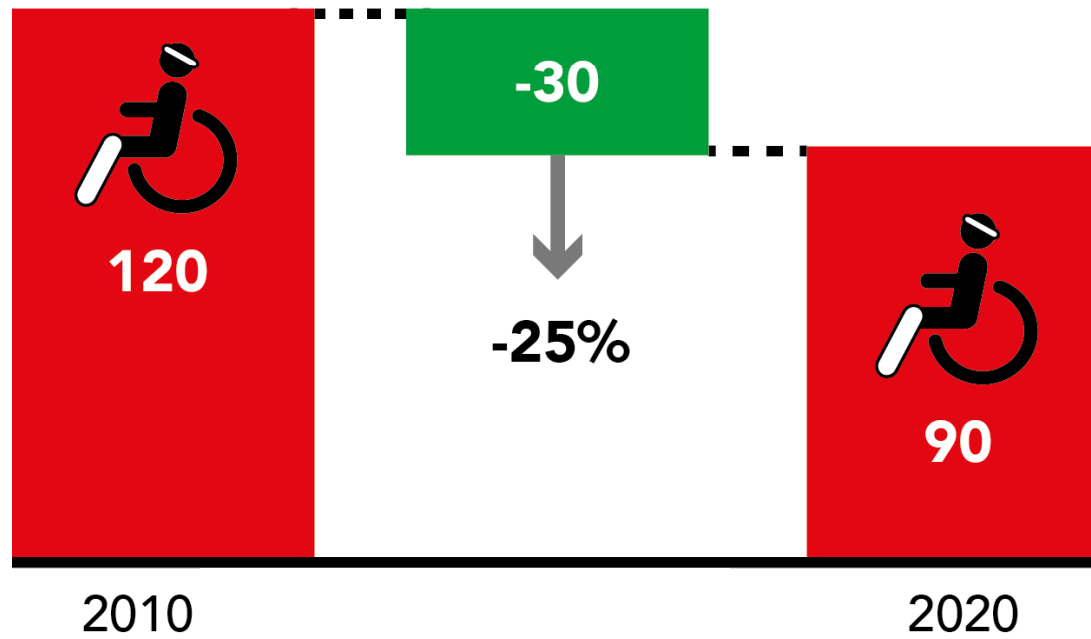


Objective road safety: severely injured and deaths



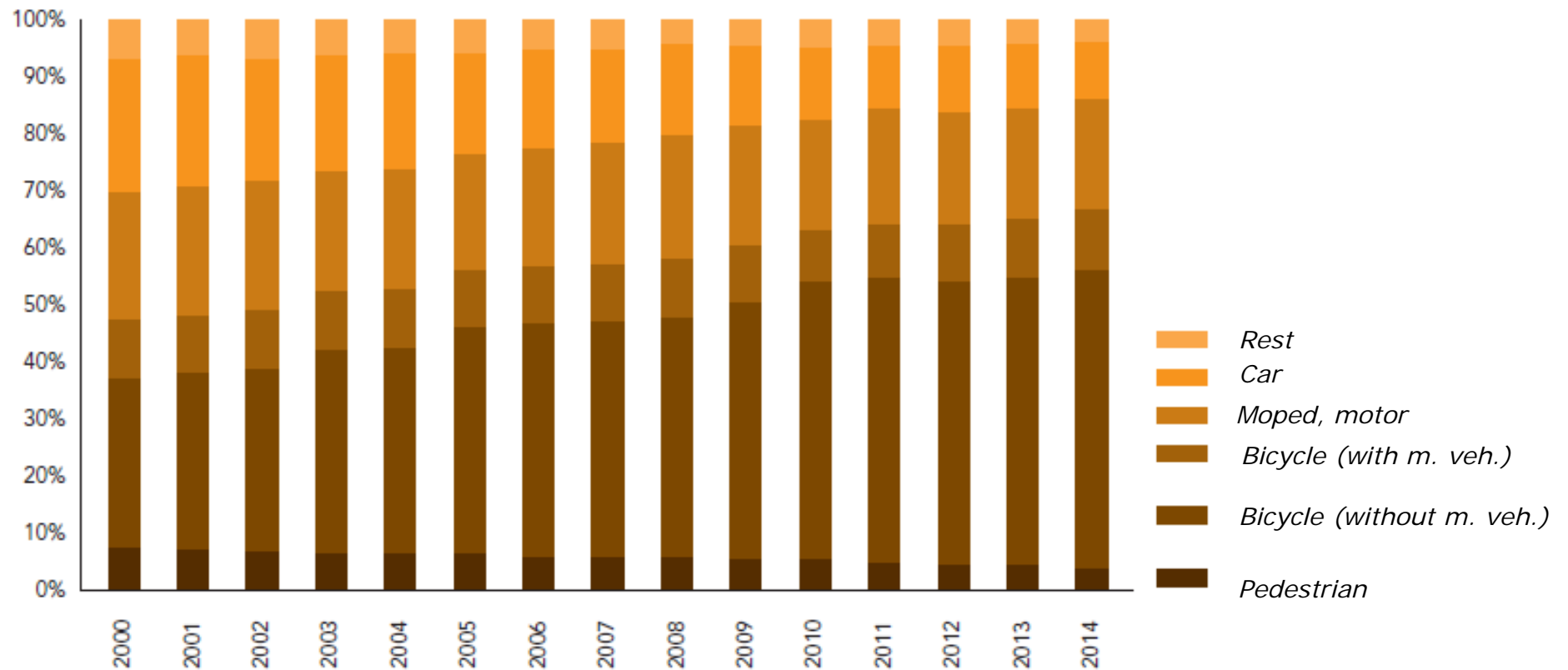


Policy target



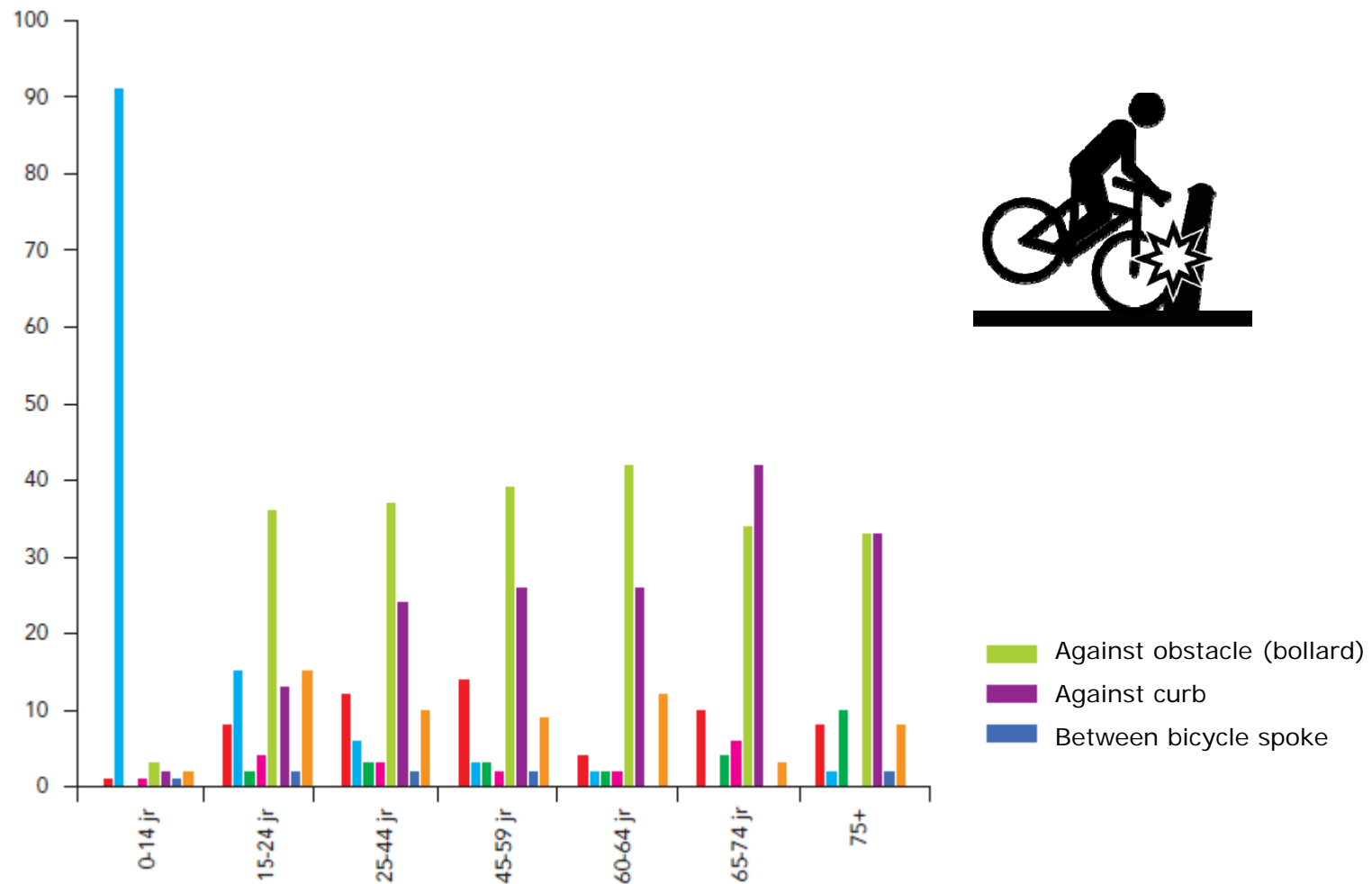


Share (%) severely injured



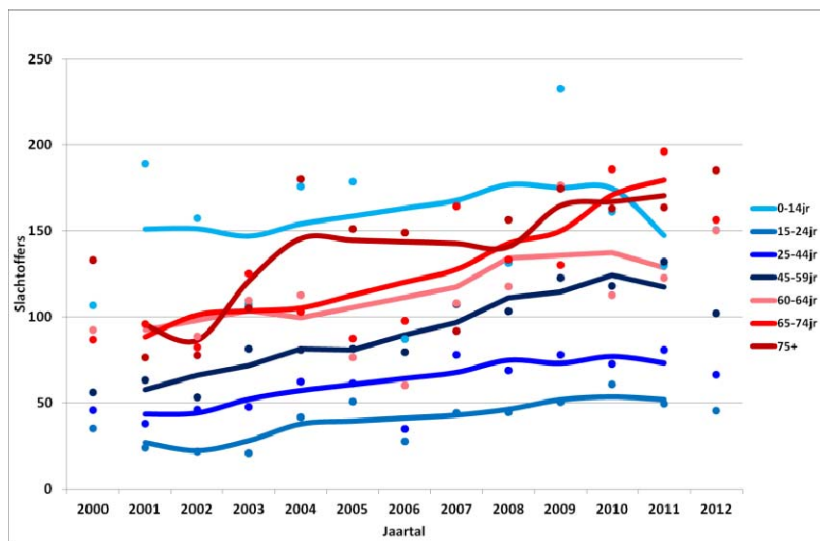


Road traffic injuries – bicycle: unilateral cause

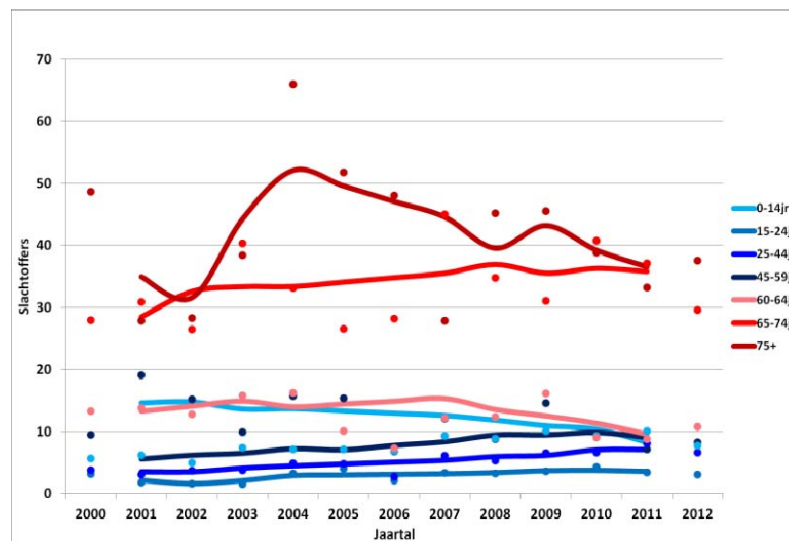




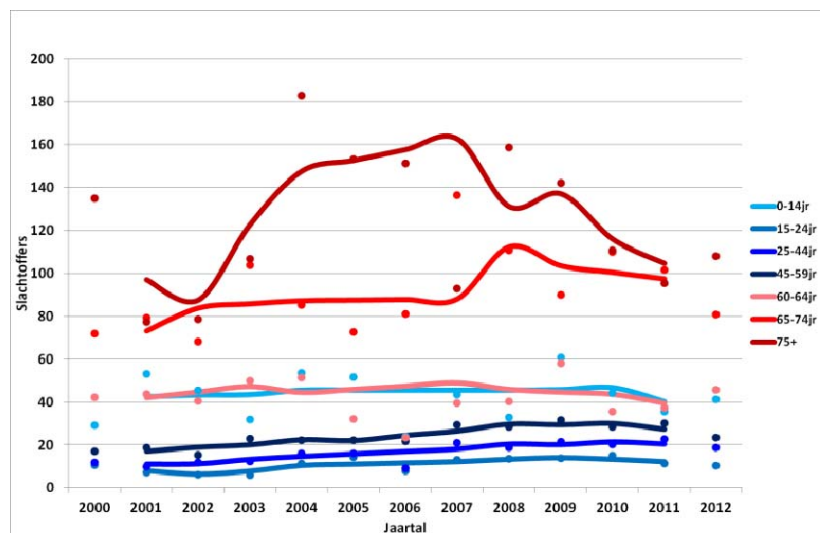
Road traffic injuries - bicycle



Per 100.000 residents



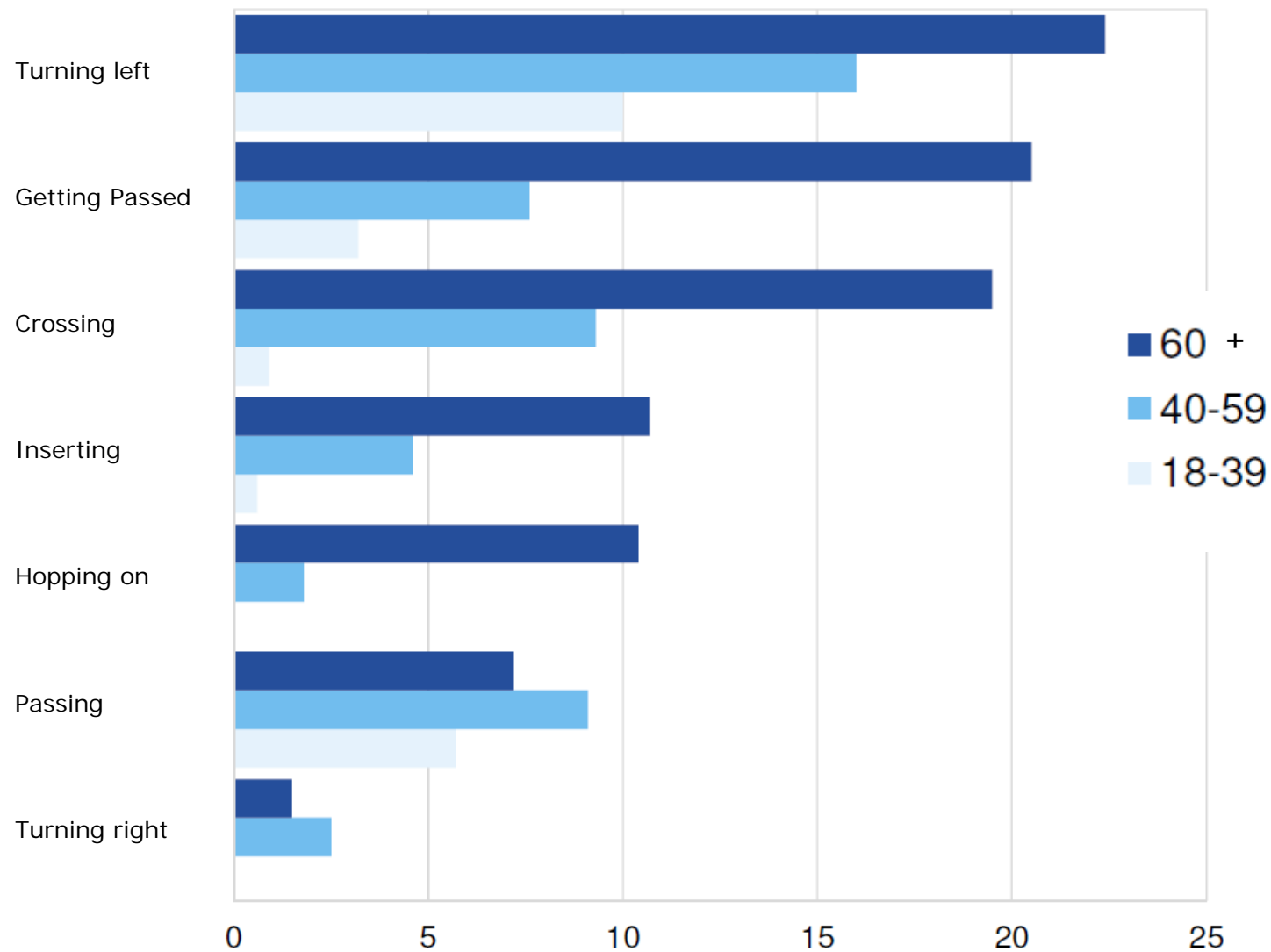
Per 10 mln kilometer



Per 10 mln bicycle trips

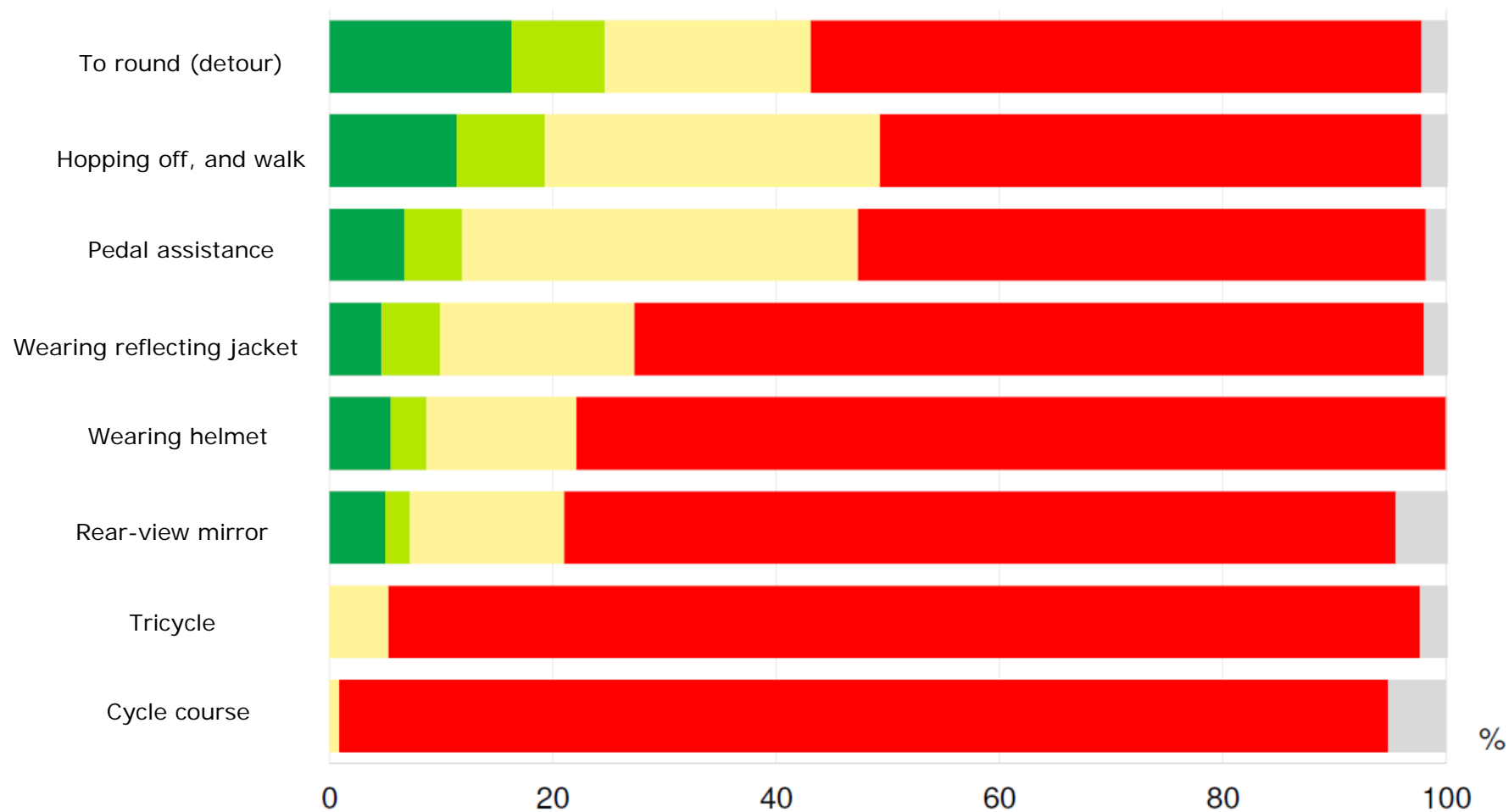


Difficult movements





Preferred measures 60+

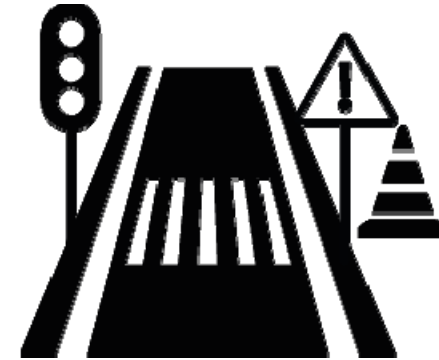




Measures: 3 dimensions



safe behaviour



safe infrastructure



safe vehicles





Vision of the elderly





Curbs: straight and sloped



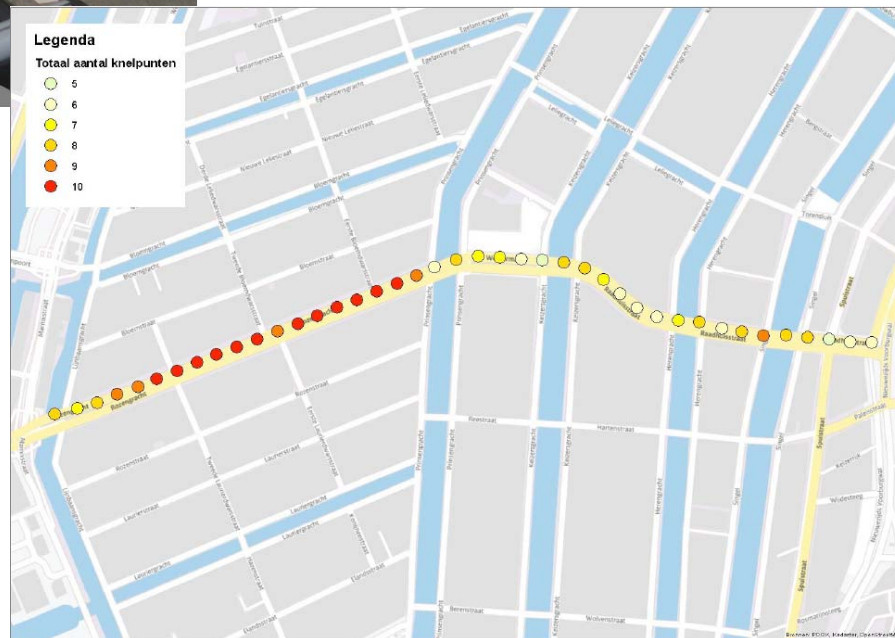
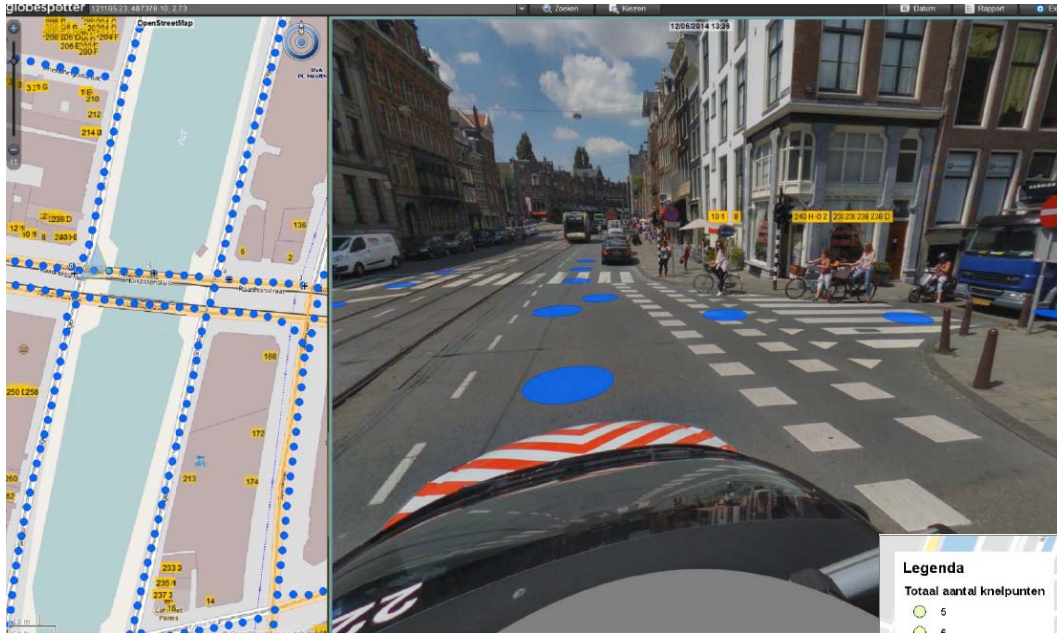


Easy left turn (and straight ahead)





Network safety index





Adjusting bikes (besides engraving)













When we start...





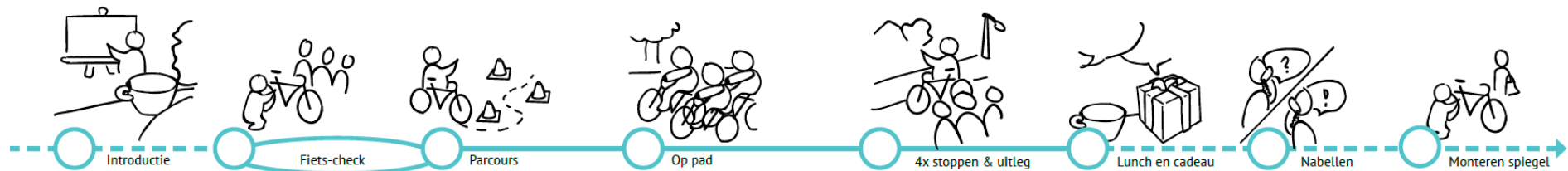
How we stimulate...

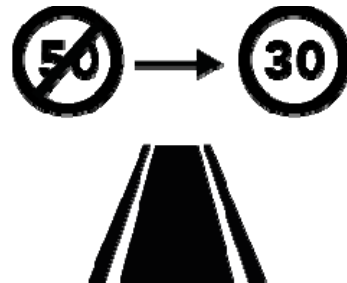




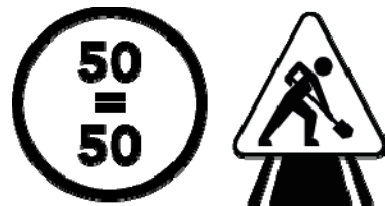
And as long as we cycle...

1. Riding the (e-)bike
2. Hop on, Hop off





Reducing max. speed limit



Enforcing 50km/h



Completing cycle lanes



Thank you!

Any questions or suggestions?

"Fotografie: Edwin van Eis"

