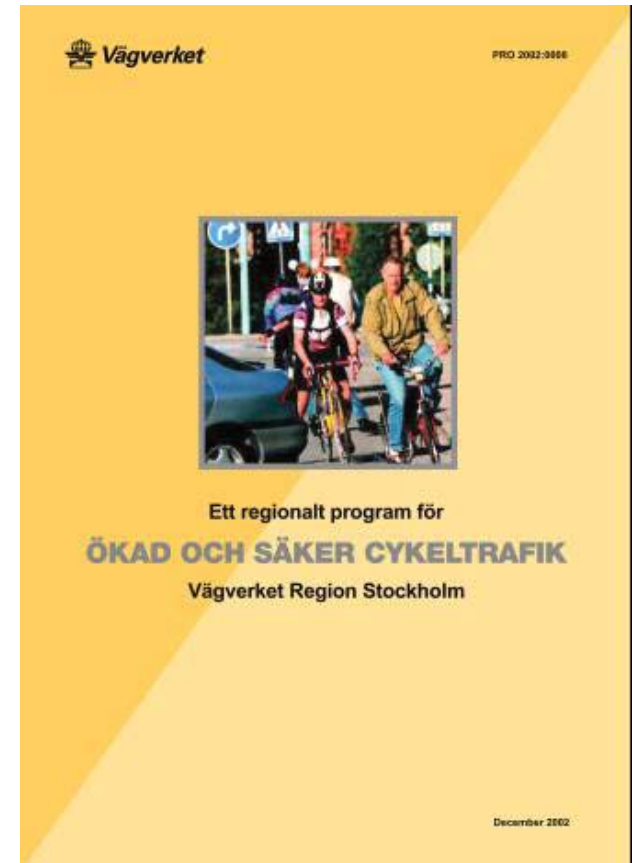


# Regional Cycling Programme 2002-2006

- The Swedish National Road Administration has drawn up a national cycling strategy.
- The strategy is a part in a overall strategy to make a better use of resources and promote a safe traffic with less congestion.
- However, traffic conditions differ throughout the country, which means that goals, strategies and action must be adapted to suit regional circumstances.
- The Stockholm Region of the SNRA has therefore together with the Local Authorities drawn up a regional cycling programme for 2002-2006.



# Four areas of focus

SAFER CYCLE TRAFFIC

MORE CYCLE TRAFFIC

Focus areas and key measures:

## INFRASTRUCTURE

- Cycle network
- Route direction signs
- Cycle parking
- Cycling & public transport
- Maintenance & operations

## ORGANISATION

- Co-operation and joint action

## KNOWLEDGE DEVELOPMENT

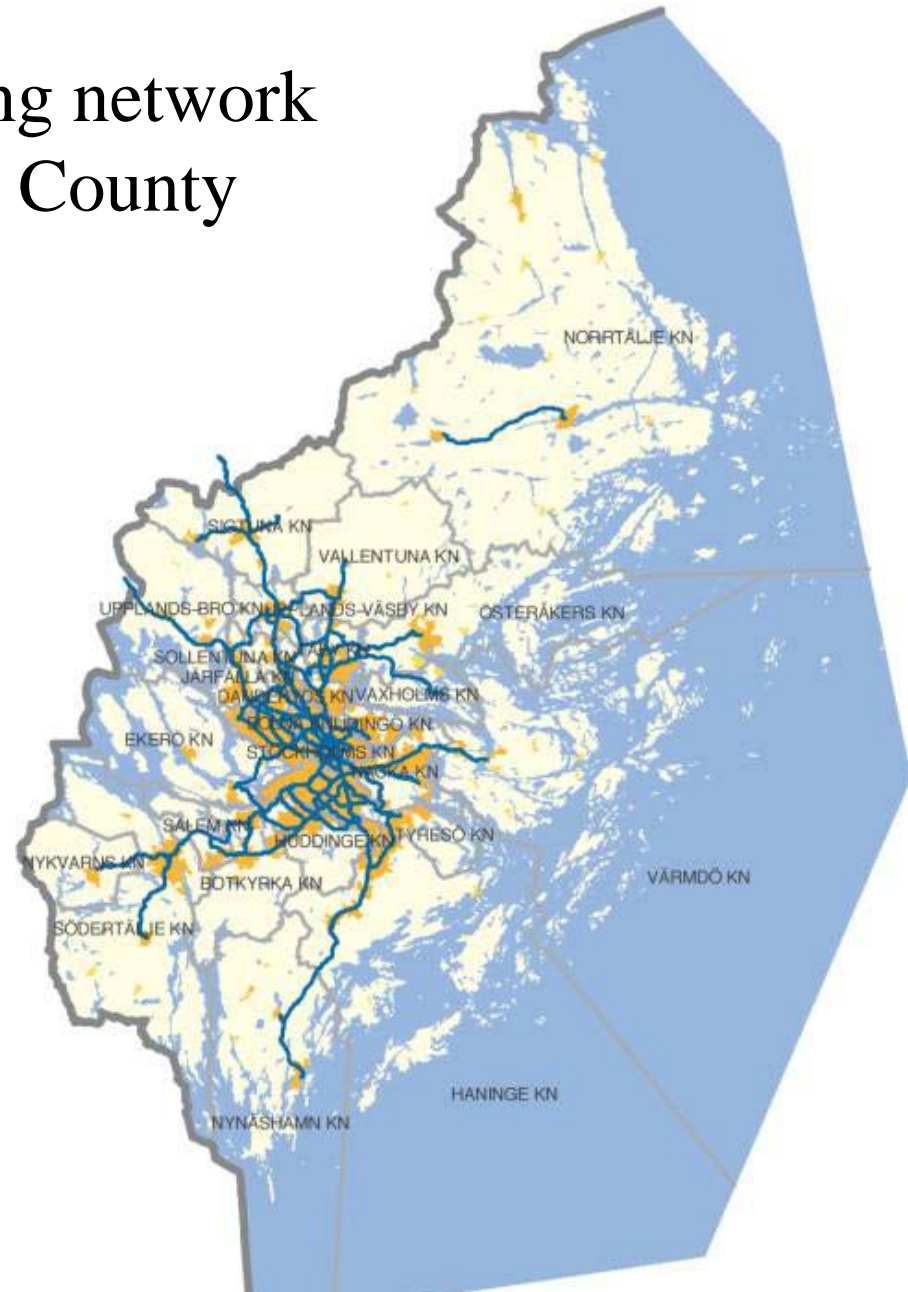
- Education
- Demo projects
- Knowledge database

## COMMUNICATION

- Cyclist information
- Motivation
- Safe cyclist

# Cycle commuting network in Stockholm County

- The regional cycle routes are a network for commuting by bicycle in Stockholm.
- The intention is that the SNRA, in partnership with Local Authorities, will create conditions in Stockholm that will induce commuters to cycle to work to a much greater extent rather than drive their own cars.
- It has been run in close co-operation with the Stockholm municipal authorities as well as with various cycling and environmental organisations.
- This has resulted in the planning and design of a commuting network for cyclists, covering some 700 kilometres and including both radial and lateral links.



# Planning and implementation handbooks







**Regionala cykelstråk  
i Stockholms län  
Vägvisning**

April 2001



**Regionala cykelstråk  
i Stockholms län  
Drift**

April 2001

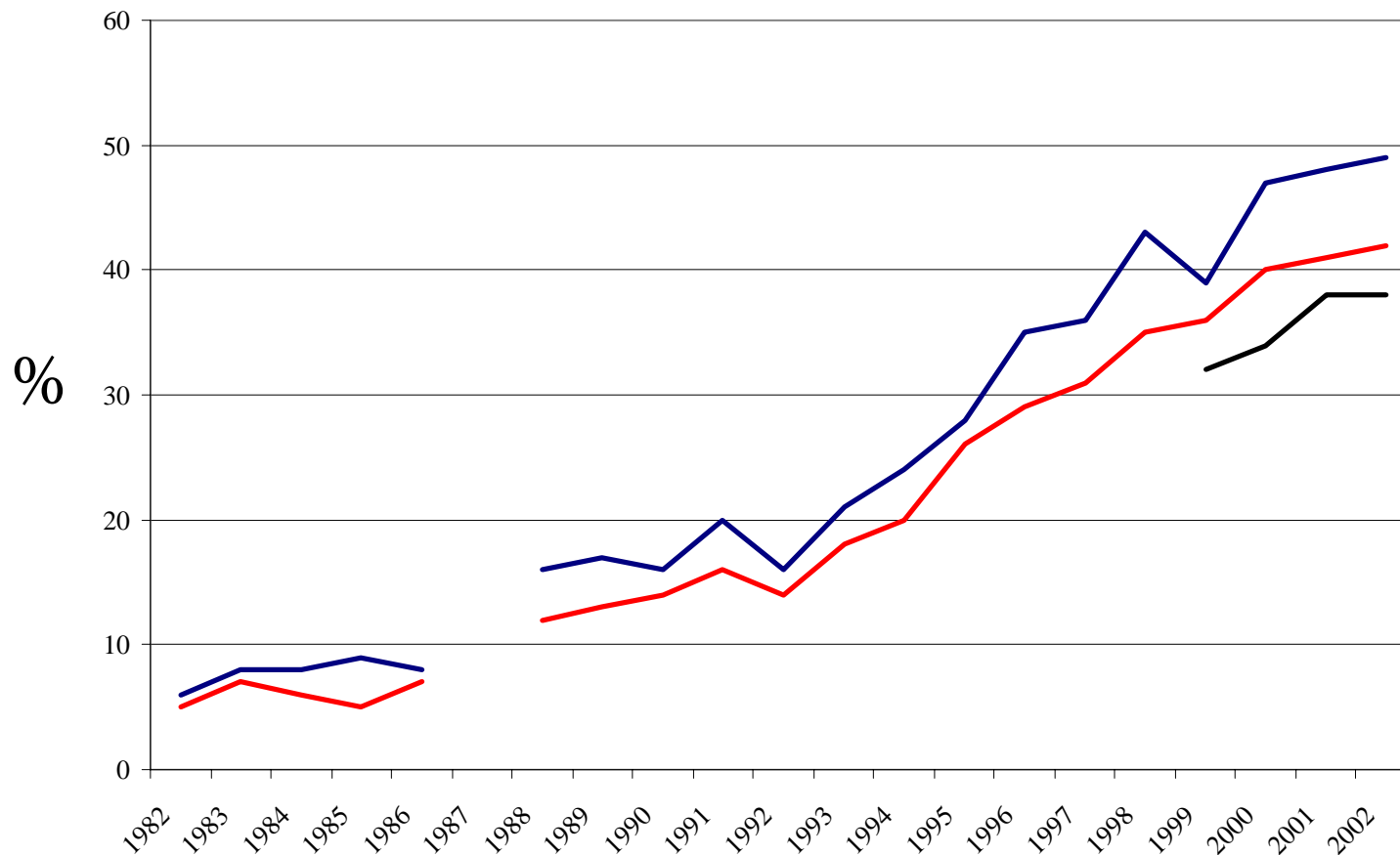
**Regionala cykelstråk  
i Stockholms län  
Råd för planering  
och utbyggnad**

April 2001

## INVESTMENTS

- Swedish National Road Administration (SNRA) – construction until now (2002/2003) amounting to a little more than SEK 14 million
- Municipal authorities – construction until now (2002/2003) some SEK 70 million, of which SEK 35 million in state subsidies
- SNRA will, within a ten-year period, build/upgrade the cycle routes considered to have the greatest potential to increase cycling
- SNRA will continue to provide the municipalities with financial support, e.g., through state subsidies
- SNRA will continue to hold the reins, monitoring and co-ordination initiatives, revising common documents, organising the ”cycle concept forum”

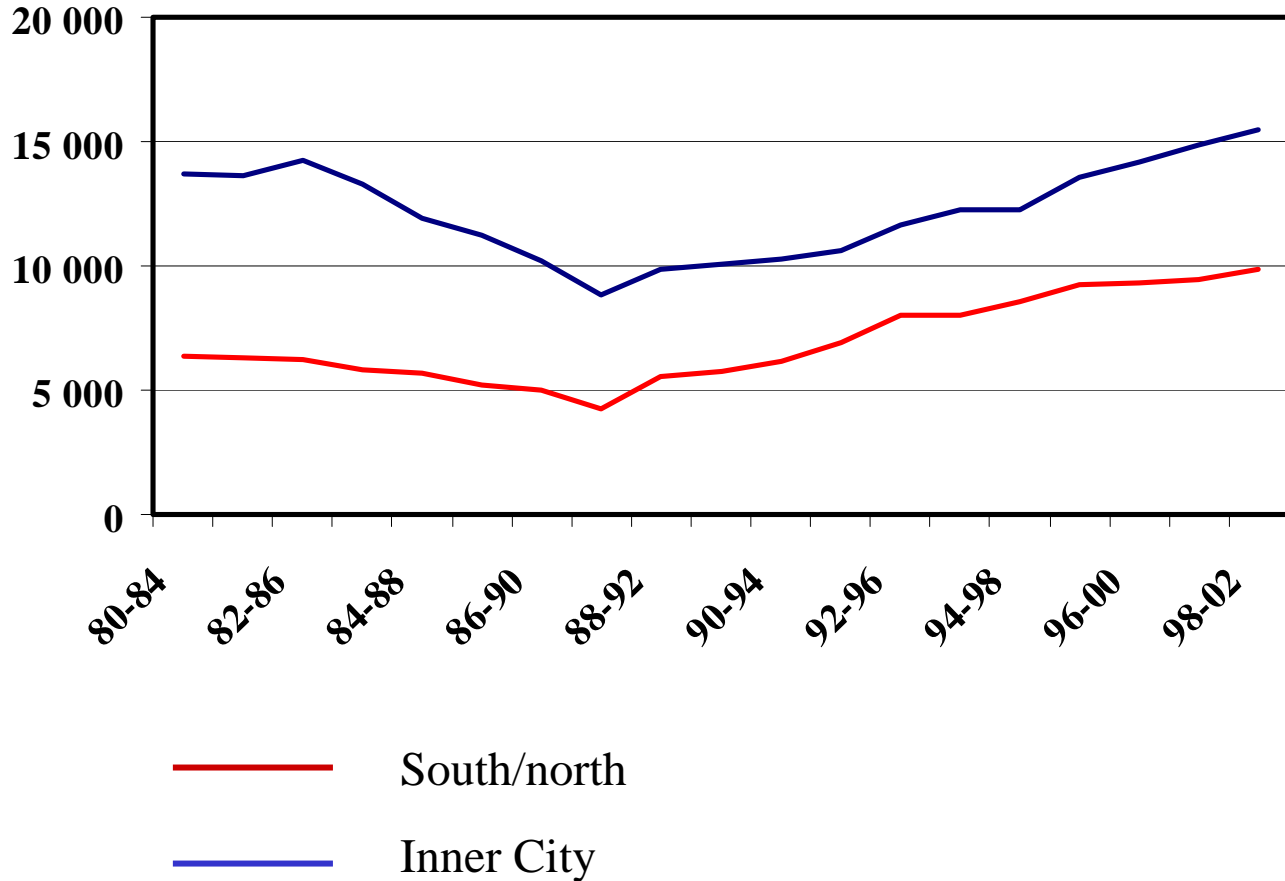
# The Use of Cycle Helmets



GATU- OCH  
FASTIGHETSKONTORET

— Inner City  
— South/north  
— Central Business District

# No:s of Cycles and Mopeds



GATU- OCH  
FASTIGHETSKONTORET

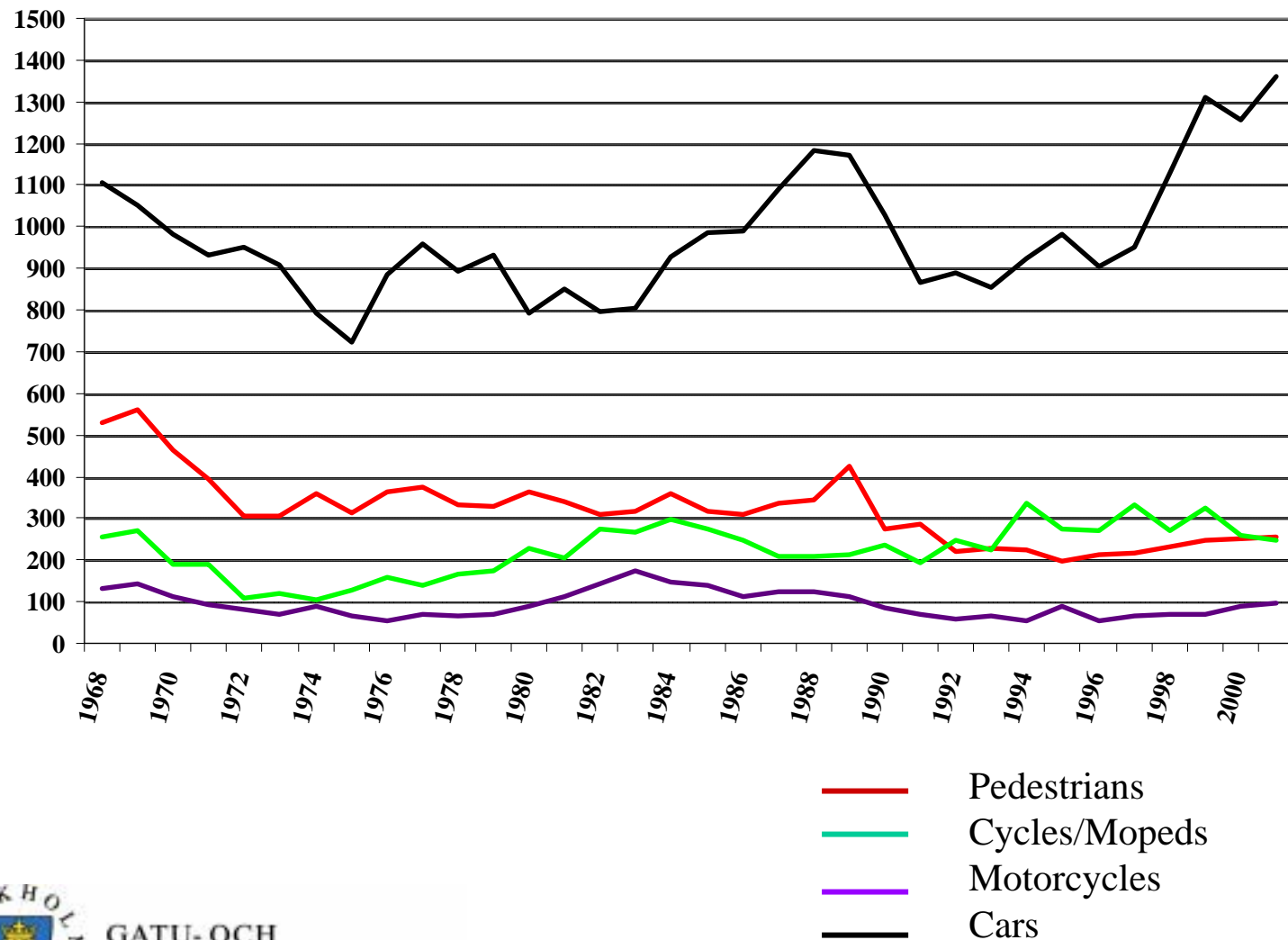


# Cycle Paths and Cycle Lanes 1998-2002

- Two-way cycle paths: 4 kilometres
- One-way cycle paths: 8 ”
- Cycle lanes: 8 ”
- Approx. M€4,5



# No:s of injuries with regard to mode of transport



GATU- OCH  
FASTIGHETSKONTORET

# Cycling - variations over the year

